

ALWTRT Informational Webinar: *The meeting will begin at 3:00*

For technical support:
Type your issue into the 'Questions' box

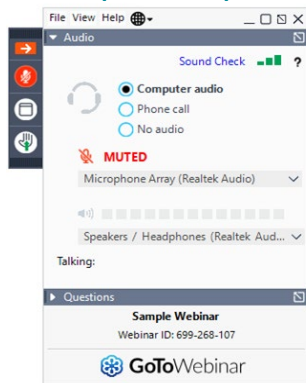
Unmuted
(green)

Muted
(red)

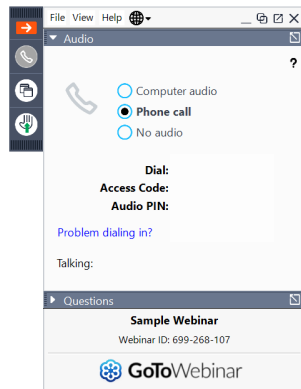


*This is the
control panel*

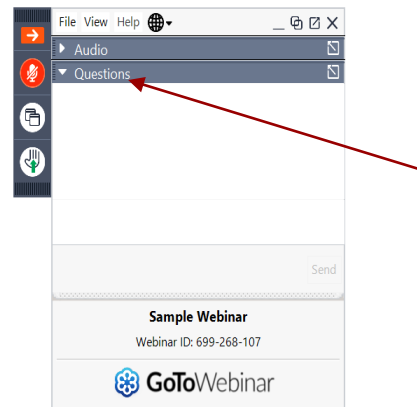
Computer Audio (Preferred)



Cell phone for audio (limited internet)




This is the questions box



Find the **Control Panel** and open it by clicking the orange arrow. You can usually find this on the right hand side of your screen. You can expand the grey option bars by clicking the triangle on the left hand side of "Audio" and "Questions".

The **Control Panel** also allows you to mute/unmute by clicking the microphone symbol.

Make sure you can see a red microphone symbol  next to your name in attendees. If you cannot, you will not be able to speak.

Select your **audio settings**. Computer audio is recommended. If you dialed in on your phone and did not enter your audio pin, please redial and enter your audio pin.

Access the audio options by clicking on the grey bar that says "Audio".

This is the **Questions box**, you will use this to 'get in line' for the Q&A. You can also use it to let us know if you are experiencing technical difficulties.

Access the questions box by clicking the grey bar that says "questions".

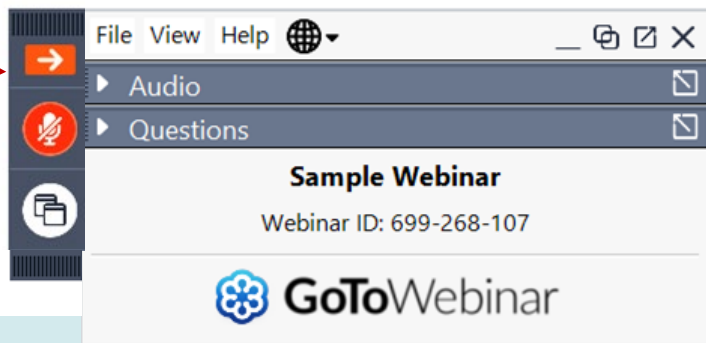
The Control Panel - 3 views

1. Hidden

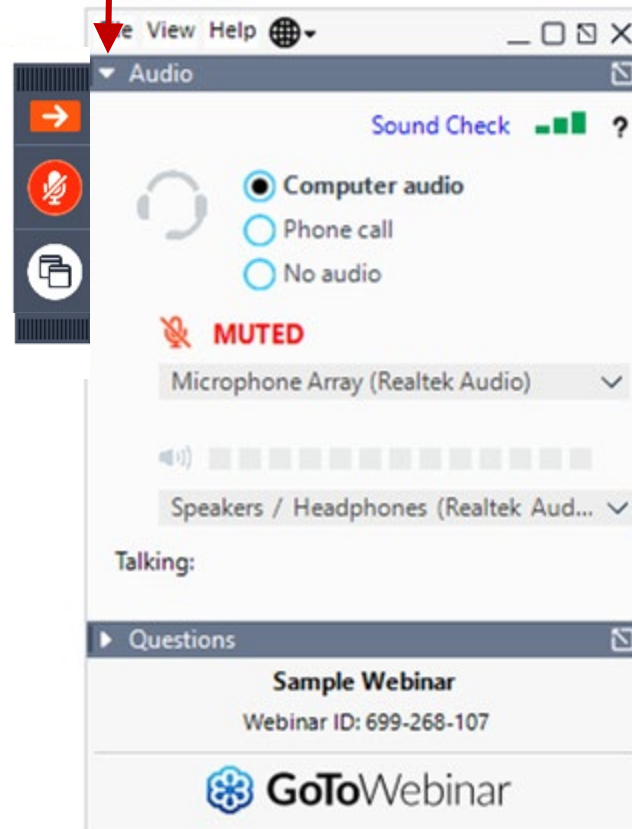


Often found on the right hand side of your screen

2. Open

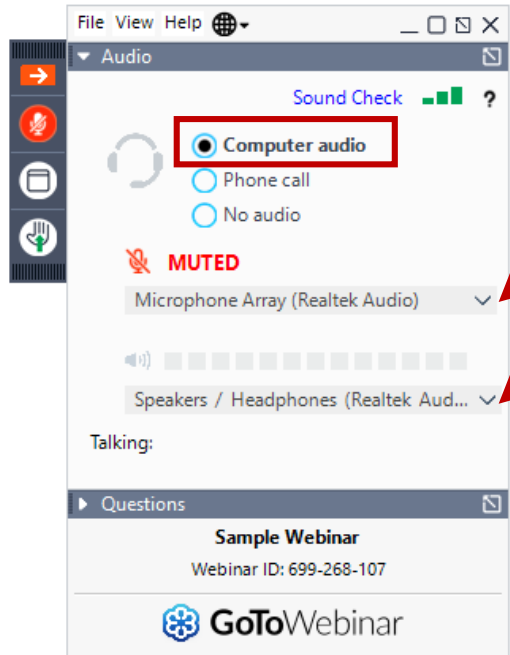


3. Expanded



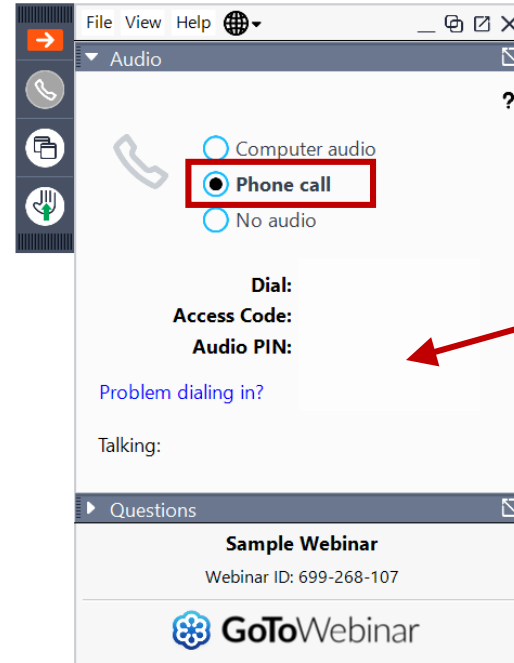
Selecting your audio settings - if joining by computer

Computer Audio - Preferred



Make sure these settings are your computer speakers/microphone or the correct headphones.

Use phone to call in for audio



If dialed in and did not enter your audio pin, you will not be able to speak. Please redial and enter your audio pin.

Your pin is unique to you, do not share it.

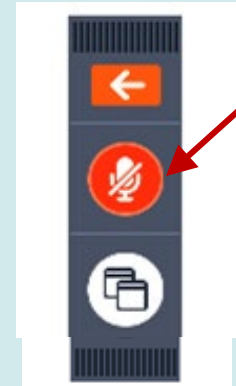
Muting and unmuting

The microphone symbol will be:
GREEN if you are unmuted
RED if you are muted

Unmuted

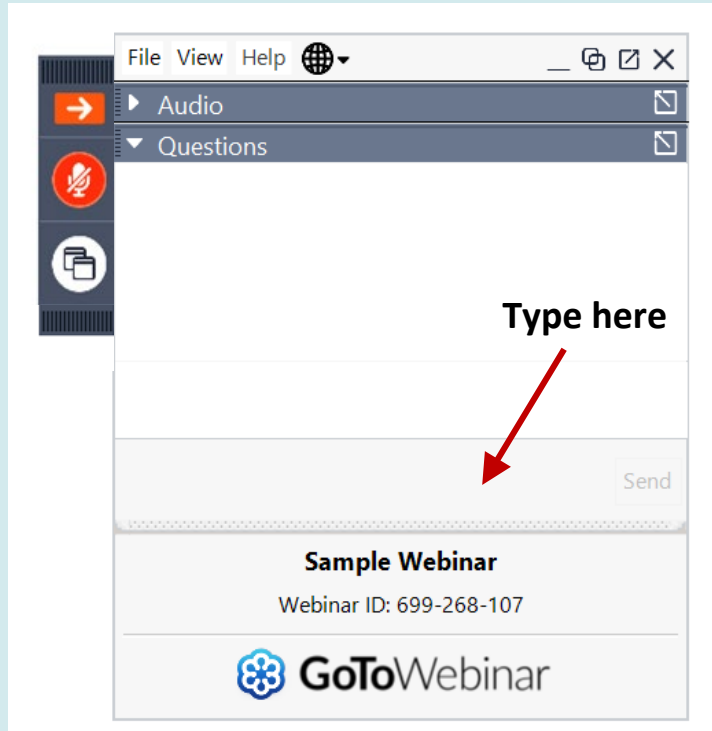


Muted



Questions Box

Only organizers can see the information typed into this box.
This information is being recorded.



What to type into the 'Questions box'

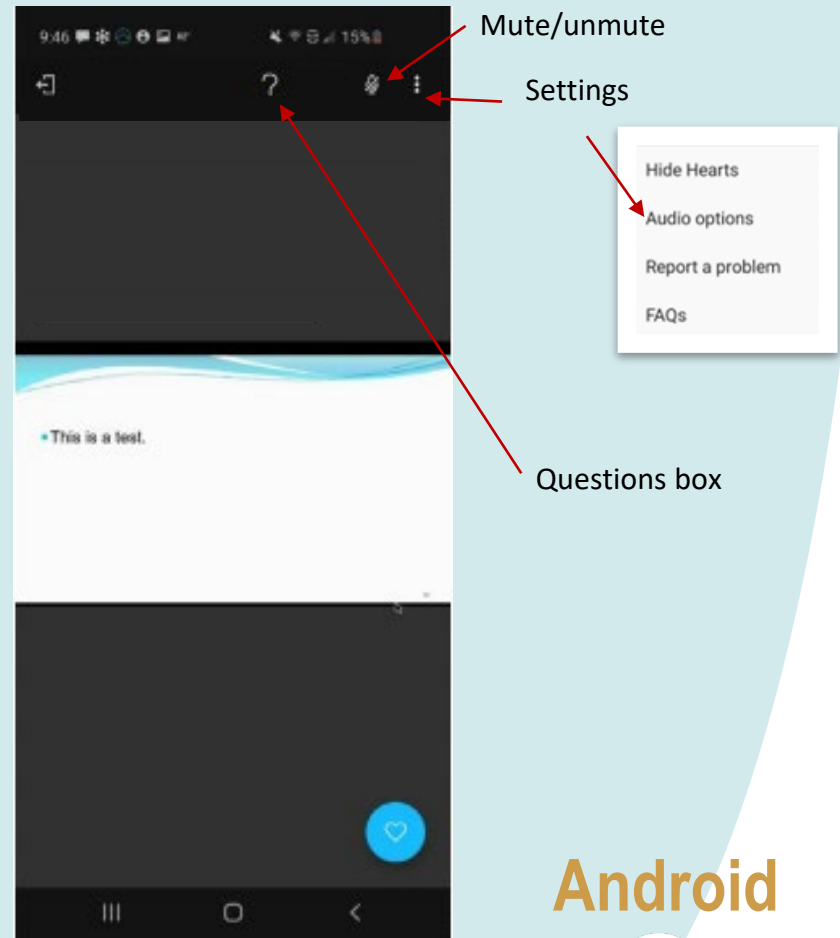
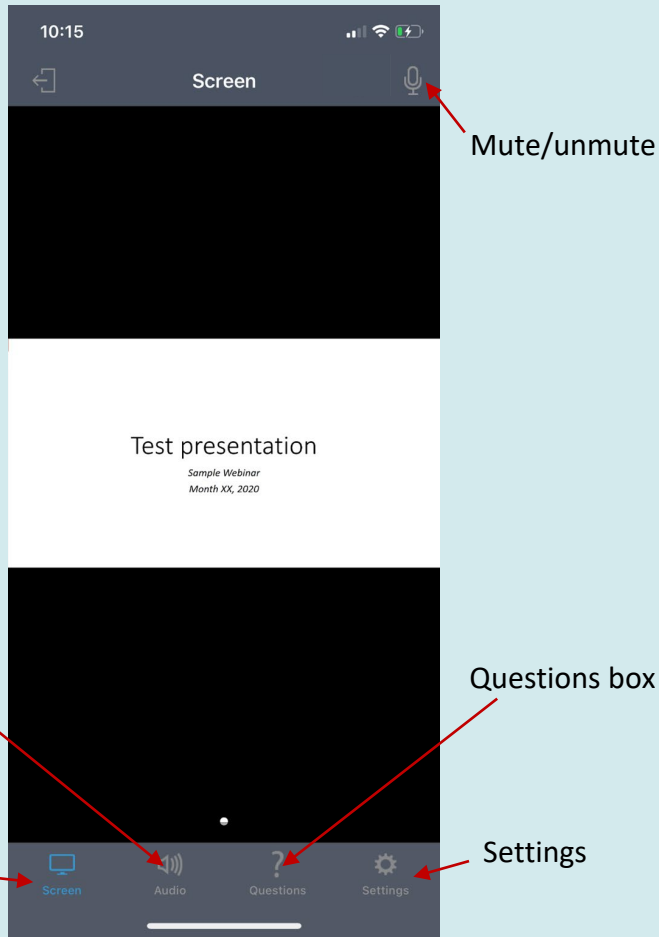
Get IN line for
Q&A session

Question on slide # or Topic X

Get OUT of line
for Q&A session

- I no longer have a question
 - My question has been answered
 - Take me off the questions list
- Or, just say "pass" when you are called on

iPhone



Android



Participating in Today's Webinar

Ground Rules for Speaking:

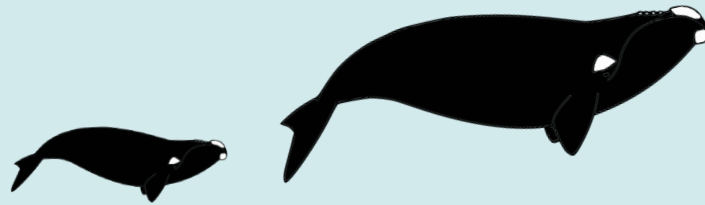
- Be respectful and direct comments at the presenters.
- When you are called on, we will un-mute you, and then you will need to un-mute yourself.
- Today's event is being recorded (including anything typed into the questions box) and will be available through the event registration page after the meeting.



ALWTRT Informational Webinar

January 18, 2022

1. Entanglement risk within MRA gap
2. Quick updates and 2021 scoping summary



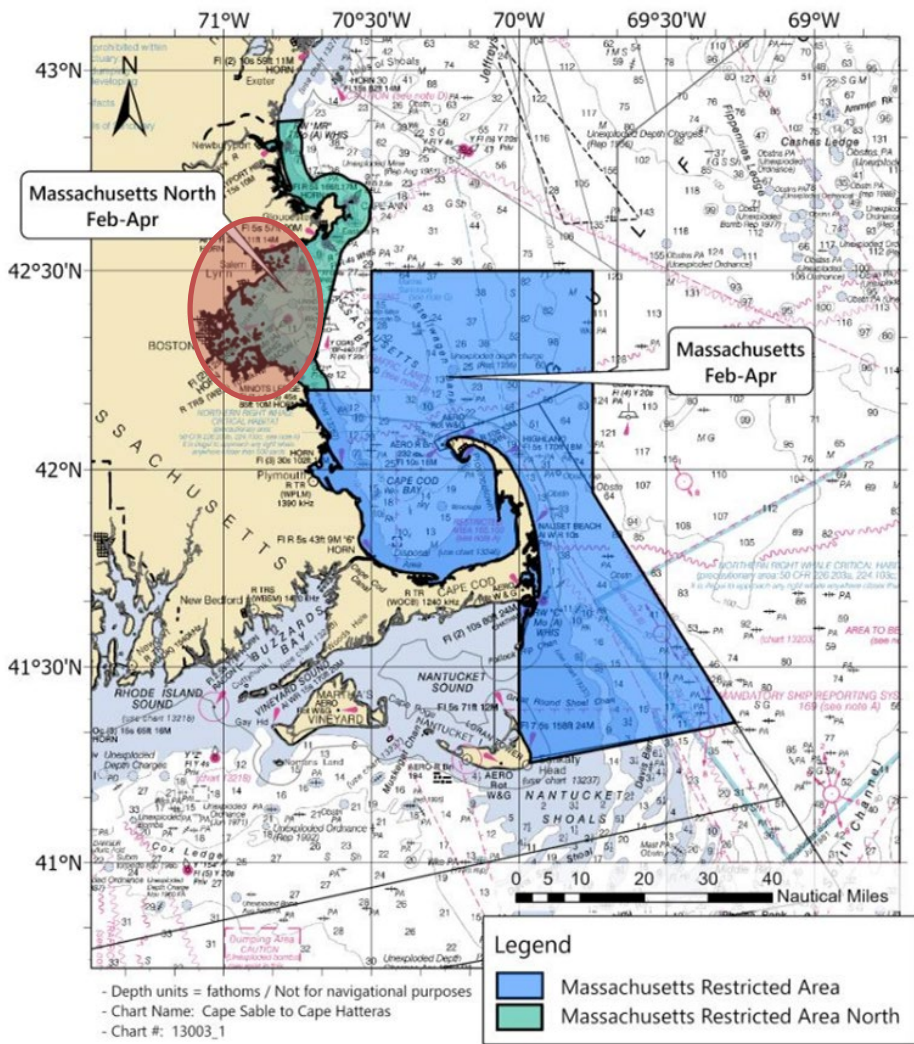
NOAA
FISHERIES

Entanglement risk within MRA gap

Presented by:

Regina Asmutis-Silvia (WDC) &

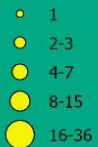
Erica Fuller (CLF)



- Depth units = fathoms / Not for navigational purposes
 - Chart Name: Cape Sable to Cape Hatteras
 - Chart #: 13003_1

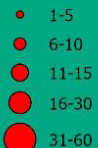
2018 Right Whale Sightings

NUMBER



Gear Present on April 23, 2018

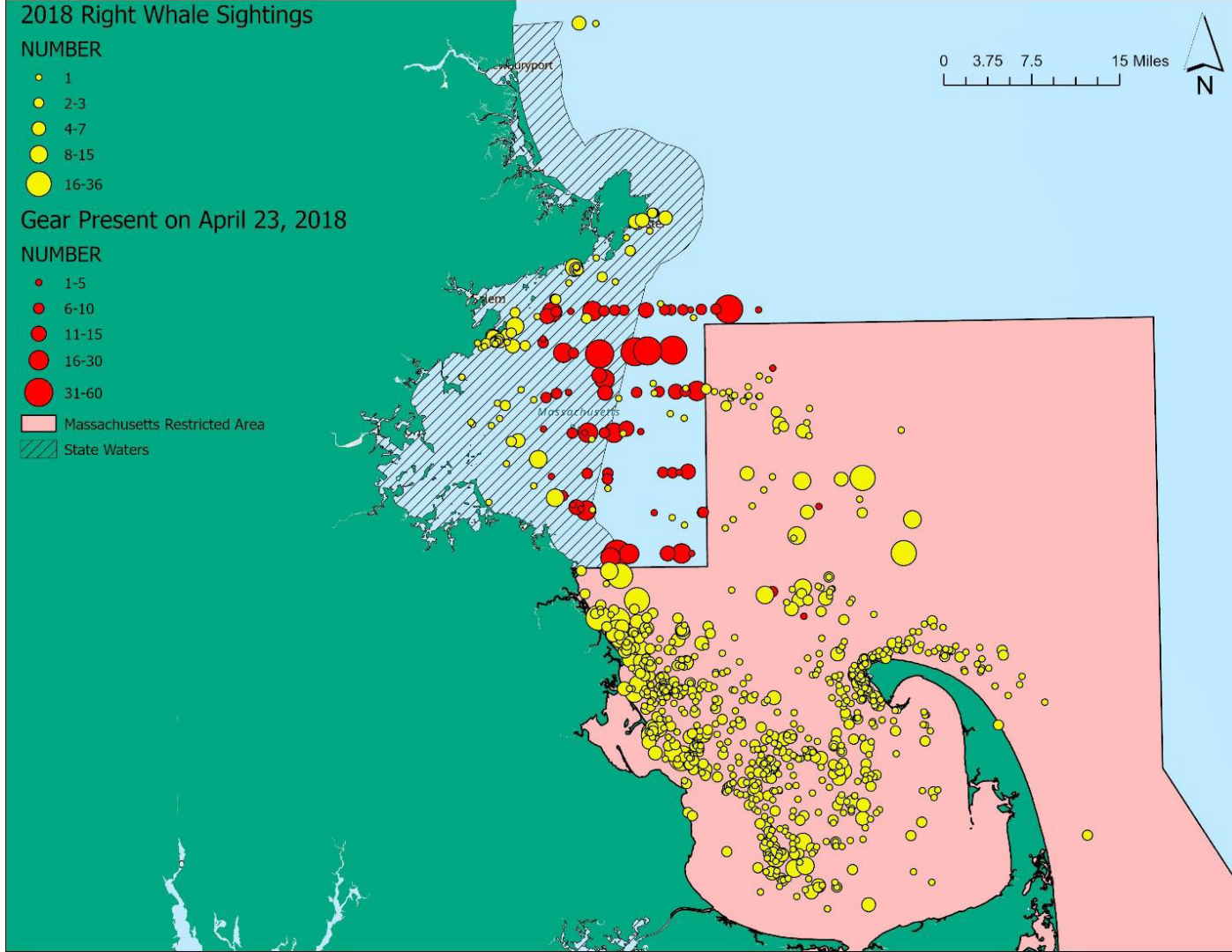
NUMBER



Massachusetts Restricted Area

State Waters

0 3.75 7.5 15 Miles



2021 Right Whale Sightings

NUMBER

- 1
- 2-3
- 4-6
- 7-9
- 10-15

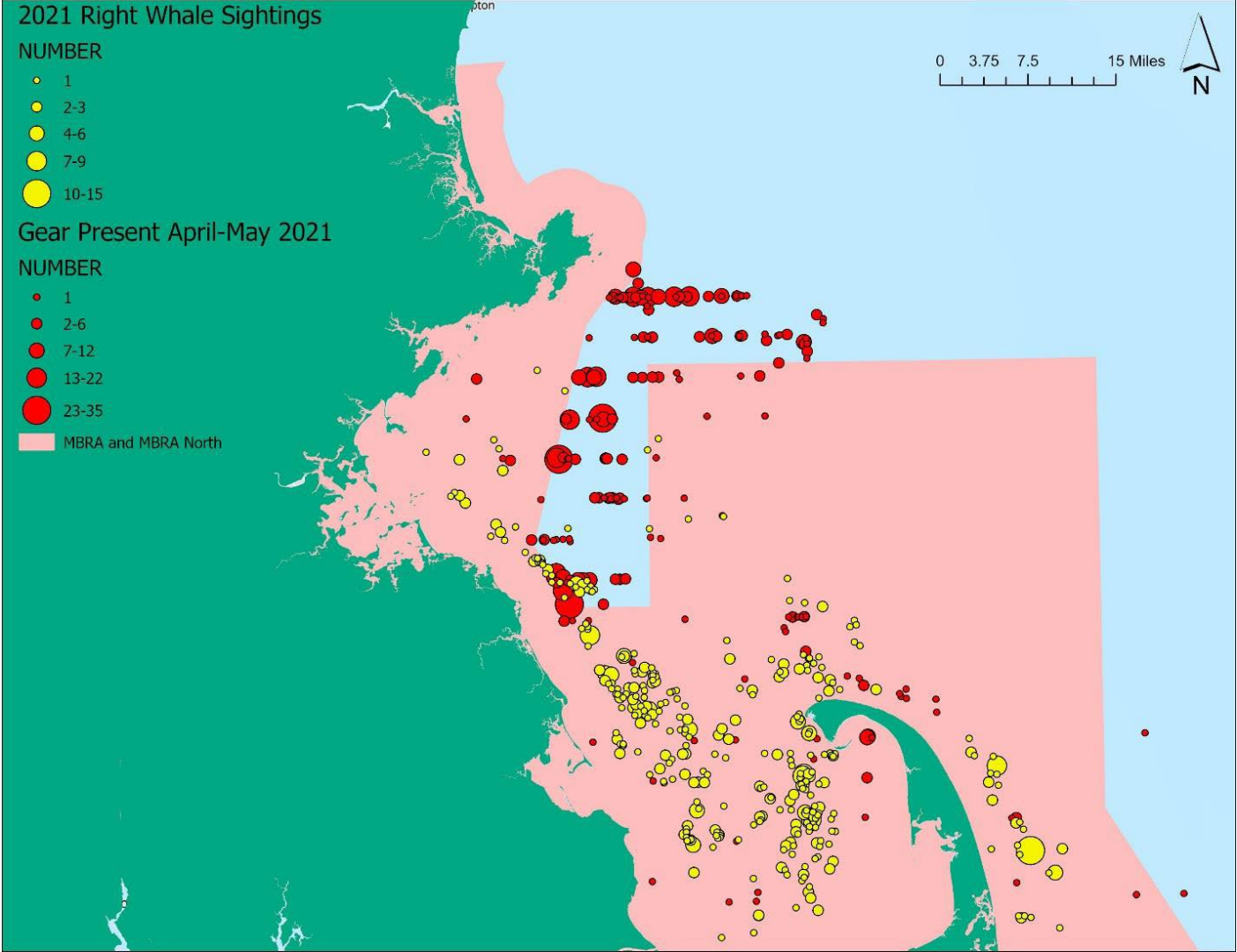
Gear Present April-May 2021

NUMBER

- 1
- 2-6
- 7-12
- 13-22
- 23-35

MBRA and MBRA North

0 3.75 7.5 15 Miles



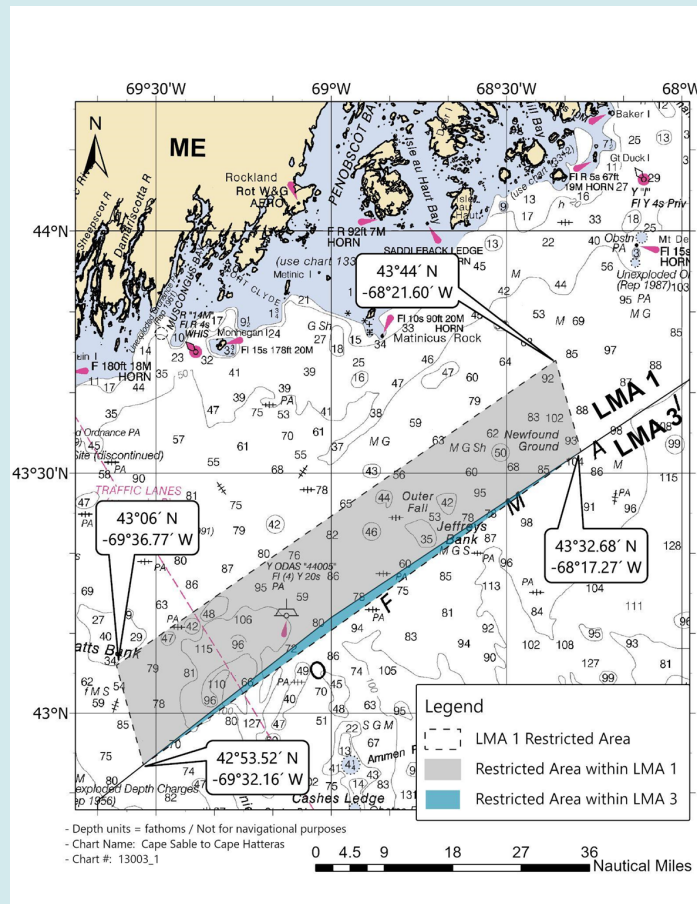
Phase I Implementation Updates



NOAA
FISHERIES

Phase I Implementation Updates: LMA 1 RA

- Regulatory language defining the LMA 1 Restricted Area does include a sliver of LMA 3
- Only seems to impact one LMA 3 vessel, very few trips since 2010
- No changes in risk reduction



Phase I Implementation Updates: Gear Modifications

Rocky Mount $\frac{3}{8}$
Avg 1,438 lbs



Rocky Mount $\frac{3}{8}$
Avg 1,568 lbs



- Gear modification deadline: May 1, 2022
- Approved weak line
 - Based on 10 tests, average +/- 10%
 - 4 ropes
- Weak sleeves
- Manufactured weak links
 - Available mid/late-January
 - We have purchased some to distribute

To see updated approval list, check here:

<https://www.fisheries.noaa.gov/new-england-mid-atlantic/marine-mammal-protection/approved-weak-inserts-and-line-atlantic-large>



Neocorp 3/8" polyester
Avg 1,530 lbs



Seaway 5/16" #10
Avg 1,229 lbs

Update on the use of knots or TTLC

- Preliminary results from the expert opinion on knots:
 - Compared line with knots to no knots, did not consider other weak inserts
 - Knots can increase the chances and/or complexity of entanglement
 - Particular concern re: baleen and head
 - Not intending to forbid operationally necessary knots but unlikely to encourage additional knots by approving them as weak inserts in buoy lines
- Gear Advisory Panel (GAP) Review of the Time Tension Line Cutter
 - The group and NMFS found the TTLC by itself is not conservation equivalent to the existing vertical line measures.
 - Made recommendations to the developer on areas of future development
 - For more information, team members can sit in on GAP subgroup meeting on Jan 27.
 - GAP is still open for volunteer ALWTRT members, please contact David.Morin@NOAA.gov if you are interested or have any questions.

Entanglement Case Updates



NOAA
FISHERIES

Case updates and 2020 Preliminary Entanglement Summary

- Right whale cases E01-14 (Eg #4057), E37-16 (Eg #3694), E01-18 (Eg #3893) gear conclusions are being changed to unknown Canadian trap based on Canadian DFO statement.
- 2020 - 27 Reported cases:
 - 4 right whales:
 - 3 still entangled (unknown gear)
 - 1 dead - #3920, 'Cottontail' (*consistent with Canadian snow crab)
 - 1 unknown whale (unknown)
 - 7 minke whales:
 - 5 dead (1 unknown, 1 unknown U.S., 1 U.S. lobster, 1 U.S. gillnet - striped bass, 1 U.S. trap)
 - 1 entangled (unknown)
 - 1 disentangled (U.S. lobster)
 - 15 humpback whales:
 - 8 still entangled (1 unknown net, 4 unknown line, 2 unknown line and buoy, 1 U.S. lobster - ALWTRP red mark);
 - 2 dead (1 U.S. gillnet - striped bass, 1 unknown)
 - 1 monitor (U.S. mono)
 - 2 gear shed (1 U.S. trap - ALWTRP red mark, 1 monofilament)
 - 2 disentangled (1 U.S. trawl net, 1 Canadian lobster)

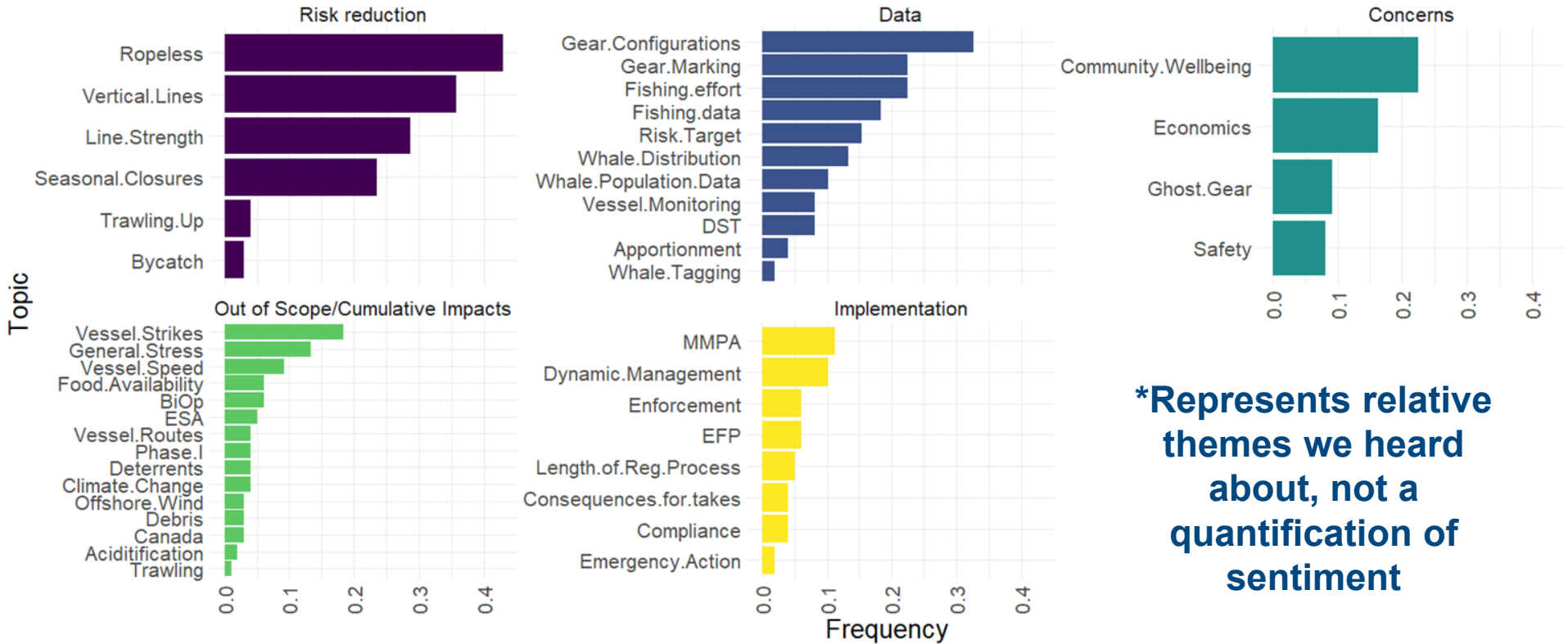
2021 Preliminary Entanglement Summary

- 2021 - 31 Reported cases:
 - 3 right whales:
 - 2 entangled (1 unknown gear, 1 unknown Canadian)
 - 1 entangled (*unknown)
 - 2 finback whales: (1 unknown, 1 navigational buoy)
 - 4 minke whales:
 - 2 dead (1 U.S. lobster - ALWTRP purple mark, 1 unknown net)
 - 1 entangled (unknown)
 - 1 disentangled (U.S. lobster - ALWTRP purple mark)
 - 22 humpback whales:
 - 6 entangled (1 unknown net, 1 unknown gillnet, 4 unknown)
 - 5 gear shed (1 unknown, 1 unknown line and buoy, 2 monofilament, *1 U.S. lobster)
 - 9 monitor (1 unknown mesh, 7 monofilament, 1 U.S. monofilament);
 - 2 disentangled (1 monofilament, 1 U.S. lobster)

Fall 2021 Scoping

- A summary of the comments received during scoping
- Focus on risk reduction ideas

General Categories - Includes Support and Opposition



***Represents relative themes we heard about, not a quantification of sentiment**

Line Reduction

- Cap all vertical lines in U.S. fisheries
- Quantifiable minimum 50% reduction in vertical lines with new data reporting requirements
- Offshore gear should be ropeless, either hybrid (i.e. one end, other fully weak) or fully ropeless year round
- Require all fixed gear fisheries to use one endline
- Cap latent effort in all Category I & II fisheries

Trawl Length

- Minimum of 8 fish traps per trawl reasonable in areas there are already existing minimum trawl requirements for lobster/Jonah crab (LMA 2)
- 1 line per 5 pots (increase max in RI/MA)
- Implement minimum traps/trawl in some areas with no min
- MA: 2 pot minimum traps/trawl in fish and whelk
- Trawl up similar to what lobster does
- No trawls in SE to protect neonates
- Apply Phase I to other trap/pot fisheries in NE

*Items in red are ideas from June/July 2021



Gillnet Configuration

- Consider different number of nets per string (e.g. Federal monkfish: minimum of 15 panels of 300' long per set is reasonable)
- Tie downs can reduce efficiency for some species and height change is only 6 ft
- Limit net quantity/length
- Increase/minimum nets per string large mesh by distance from shore
- Maximum length of net string

Effort Reduction

- Soak time restrictions of anchored gillnet (current 30 day restriction)
 - Reduce soak times (e.g. use minimum soak times needed, 24-48 hrs for some, 3-5 days for others)
 - Restrict night fishing (though important for some fisheries)
- Tending requirements for anchored sink gillnets
- Reduce effort in nearshore, state waters where effort has increased
- Consider forthcoming offshore trap/pot trap caps
- Reduce fish pot limits (RI)
- Trap limits for oceanside blue crab in SE (100 for GA & 200 for FL)
- Reduce trap limit in whelk fishery to 150 or 100 (from 200)

Seasonal Closures

- Expand or extend existing areas based on co-occurrence
 - E.g. SERA N/S, GSCRA, SIRA, MRA, CCB
- Southern New England: year long closure or Nov - May
- Align gillnet and trap/pot timing and areas
- Establish other year long closures, pending ropeless
- Prohibit gillnet from new SIRA or keep Nantucket/Closed Area I
- Closures along migratory route (e.g. rolling closures in mid-Atlantic)
- Reconsider closures not implemented in Phase I
- Extend CCB closure similar to MA State, extend MA state water closure to gillnets
- Allow ropeless gear in existing closures (including BSB in Southeast U.S. waters during the calving season)

Weak Line or Inserts

- Cap line diameter (e.g. 3/8", 7/16" caps, 1/2 to distinguish from Canada)
- Modify gillnet anchor requirements to accommodate weaker links
- Maximum head rope size 3/8" line
- Require frequent inserts (every 40 or 60 feet) or fully formed weak line
- Adopt MA state water weak line regs everywhere (regular inserts or full weak line in top portion of the line)
- Require full weak line for gillnet buoy lines
- Where possible, use weaker inserts (possibly 1100 lb) with a smaller anchor (8 lb)
- Use weakest line possible with single trap/pots



Gear Marking

- Target gear marking in areas with entanglement problems
- Expand gear marking to all U.S. fixed-gear fisheries, including exempted areas
- Create marking specific to fisheries and/or regions
- Support for marks observable from afar

Other Main Themes

- Other threats to North Atlantic right whales
- Risk reduction target for all age classes
- Monitoring of whales and gear
- Vessel monitoring and reporting requirements
- Need for good enforcement and agency coordination
- Accessibility of permitting process and requirements for ropeless fishing
- Thorough modeling of fishing effort in the DST
- Maintain Maine exemption waters
- Indirect effects of regulations on other species/habitats
- The impact of regulations on fishing communities
- Animal welfare and intrinsic value considerations
- Emergency action

Save the Dates

- Jan 27 at 3 pm: GAP Subgroup Meeting (Team invited to sit in, no public)
- Feb 24 at 3 pm: New England Aquarium Info Webinar
 - Amy Knowlton will discuss a potential approach to apportionment of unknown entanglements
 - Heather Pettis will present their anthropogenic event database
- Week of March 28: canceled previously scheduled meeting, stay tuned for info webinars
- Next full team meeting: reserve May 9-13, 2022 for a hybrid meeting

Questions

Use the “Questions” box to get in line

