

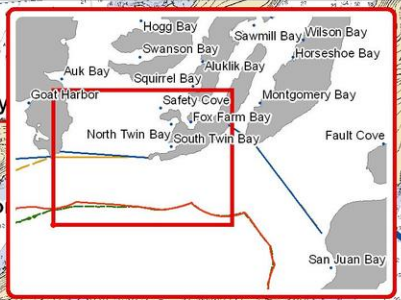
148°20'0"W

148°10'0"W

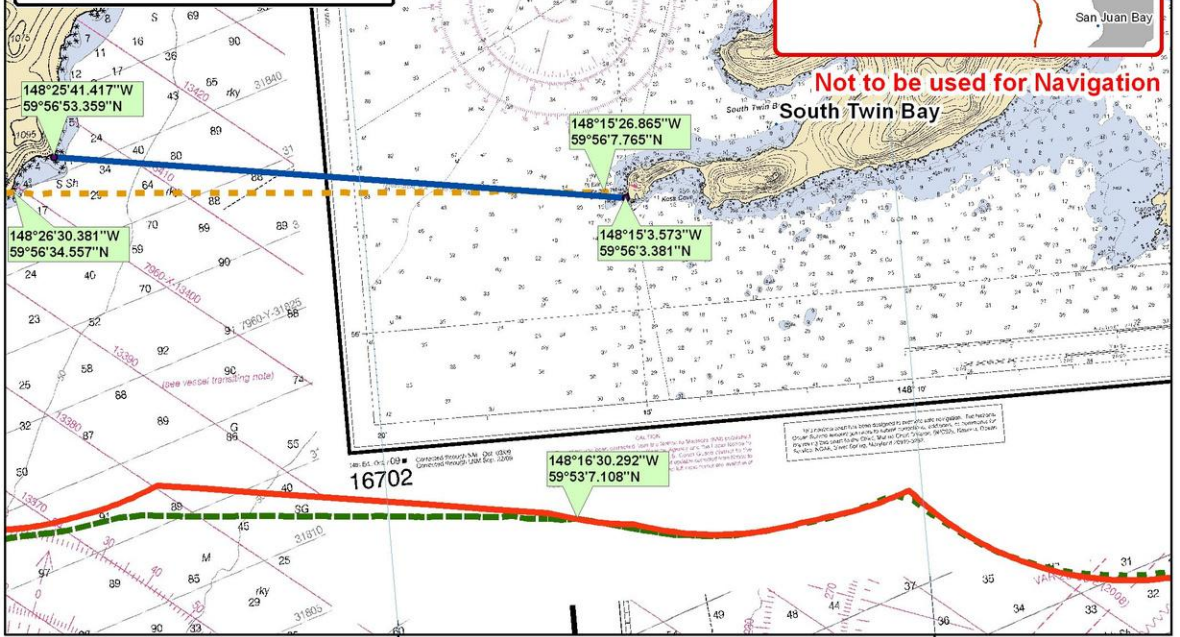
60°0'0"N

### Changes to Baselines (Closing Lines) and changes to the 3nm Line

- New NOAA 3nm Lines
- New NOAA Baselines
- - - Old NOAA Baselines
- - - Old NOAA 3nm Lines



**Not to be used for Navigation**



148°25'41.417"W  
59°56'53.359"N

148°15'26.865"W  
59°56'7.765"N

148°26'30.381"W  
59°56'34.557"N

148°15'3.573"W  
59°56'3.381"N

148°16'30.292"W  
59°53'7.108"N

16702

NOAA uses the best available information to produce the charts and publications. The charts and publications are not intended to be used for navigation. The National Oceanic and Atmospheric Administration is not responsible for any errors or omissions in the charts and publications. The charts and publications are not intended to be used for navigation. The National Oceanic and Atmospheric Administration is not responsible for any errors or omissions in the charts and publications.

148°20'0"W

148°10'0"W