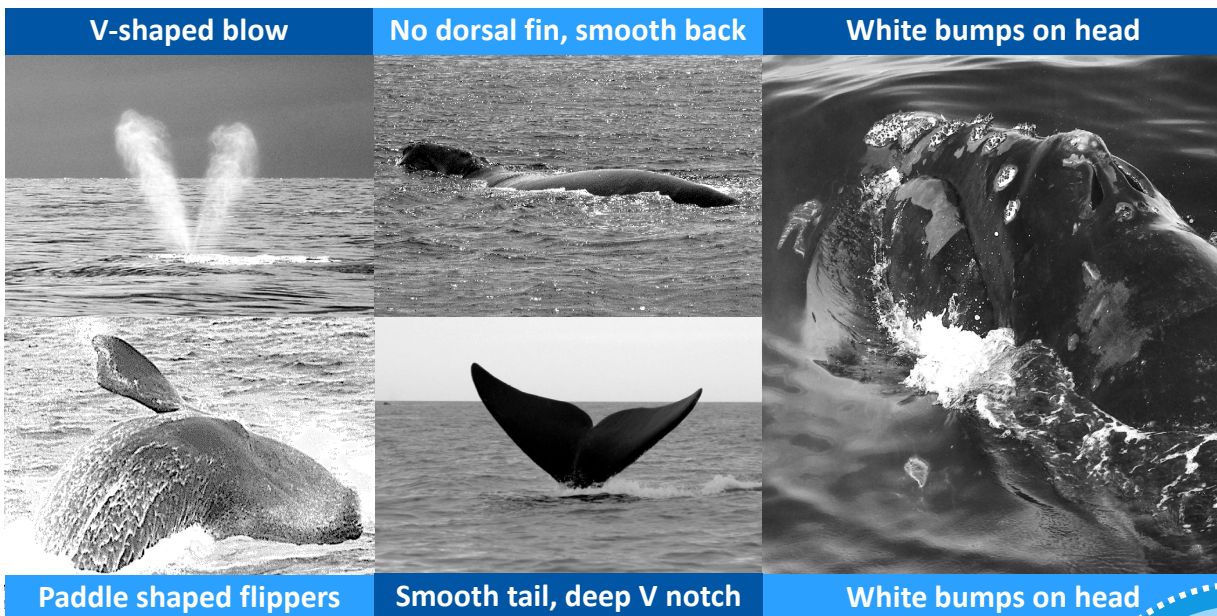




**NOAA  
FISHERIES**

# *Have you seen a* **North Pacific Right Whale?**

*What to look for:*



*What to do if you see a right whale:*

**Slow Down** ►

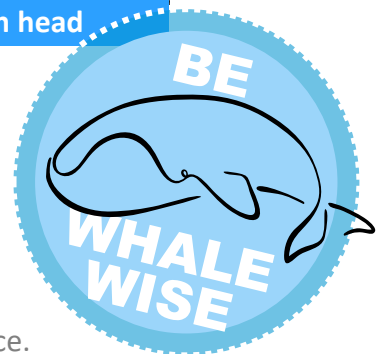
Right whales are slow moving, so reduce speed to less than 10 knots, and stay at least 500 yards away.

**Photograph** ►

Identifying individuals is critical! Take photos of the side of the head, tail, or visible scars, from a safe distance.

**Report It** ►

**North Pacific right whales are extremely rare, and every sighting is important!**  
Report location (lat/long), date, time, and number of animals, along with contact info.



**IMMEDIATELY REPORT RIGHT WHALE SIGHTINGS: [NP.RW@noaa.gov](mailto:NP.RW@noaa.gov)**

*Photo of callosities copyright International Whaling Commission. <https://iwc.int>  
Other photos provided by NOAA. For comments or questions about this sign, contact [NP.RW@noaa.gov](mailto:NP.RW@noaa.gov)*