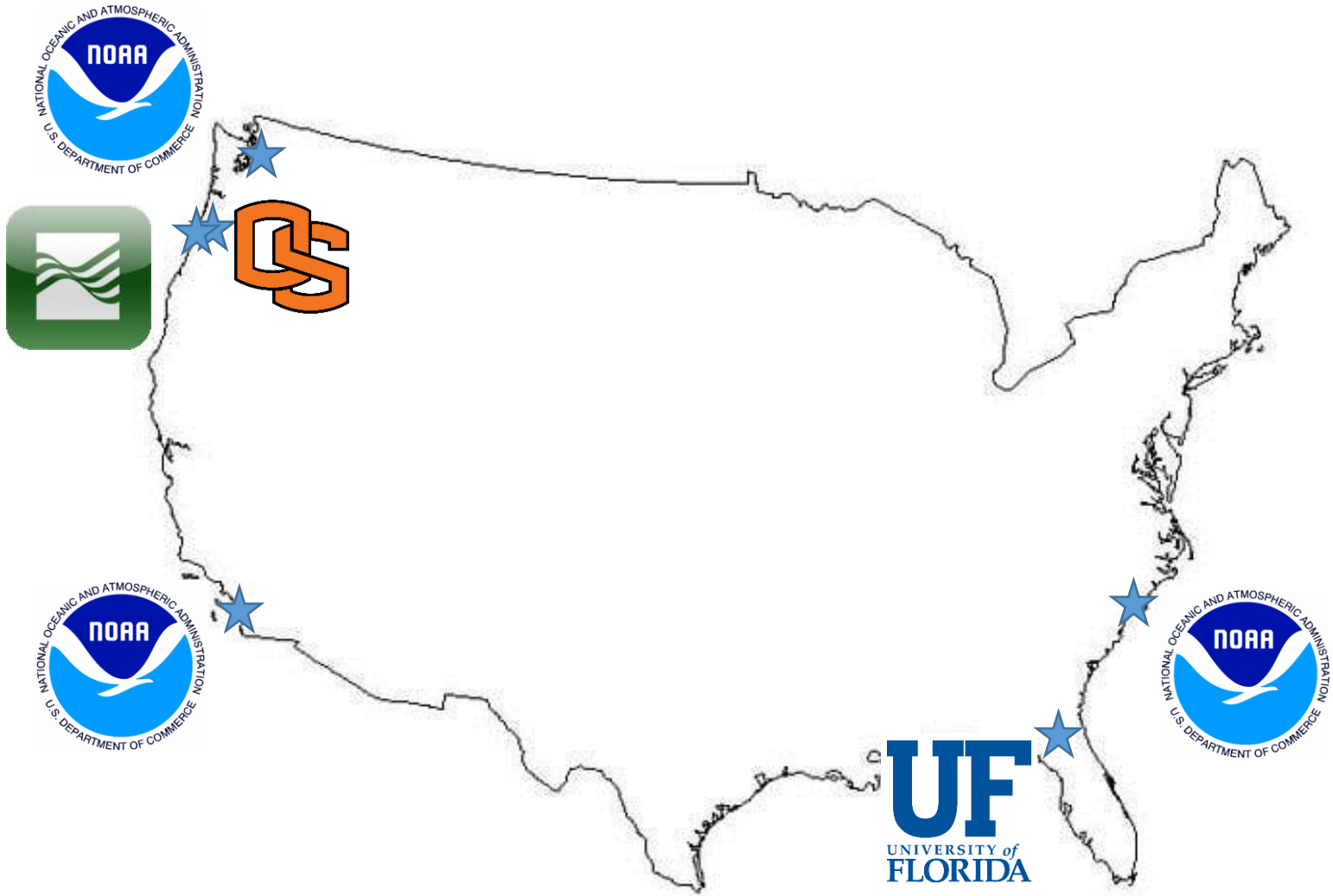


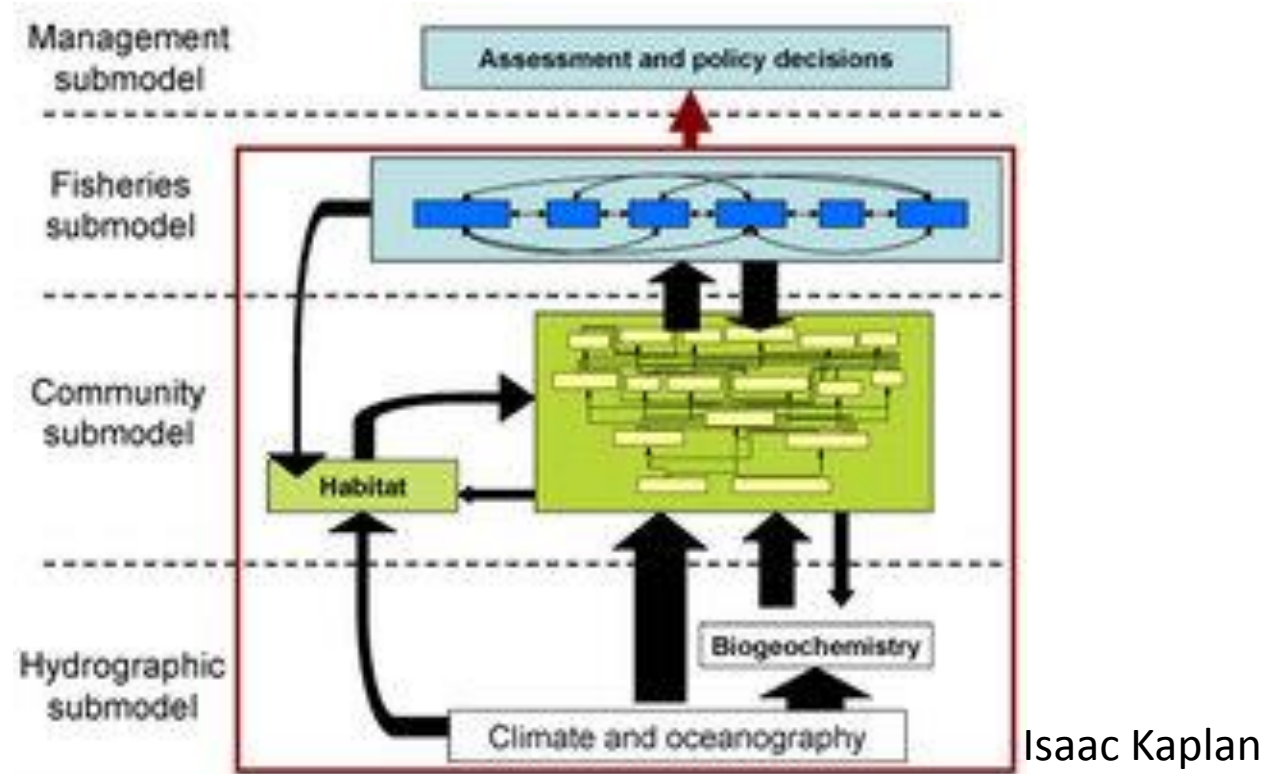


# An integrative model of sea turtle growth based on recoveries and mark-recapture data

Brandon Chasco, Eric Ward, Larisa Avens, Lisa Goshe,  
Joanne McNeill, Alan Bolten, Karen Bjorndal, Selina Heppell,  
Melissa Snover, Tomo Eguchi, Eli Holmes, and Howard Coleman



# Evolution in Fisheries and Ecological Modeling

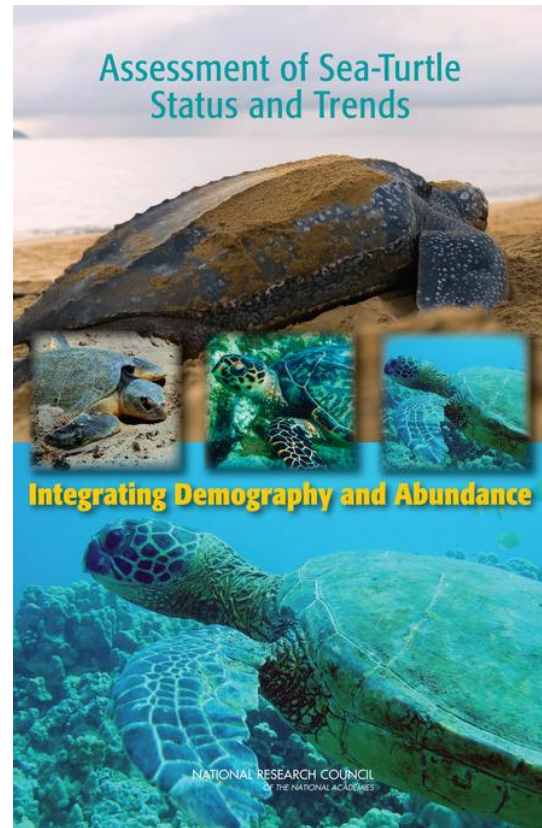


Integrated modeling

Stochastic processes

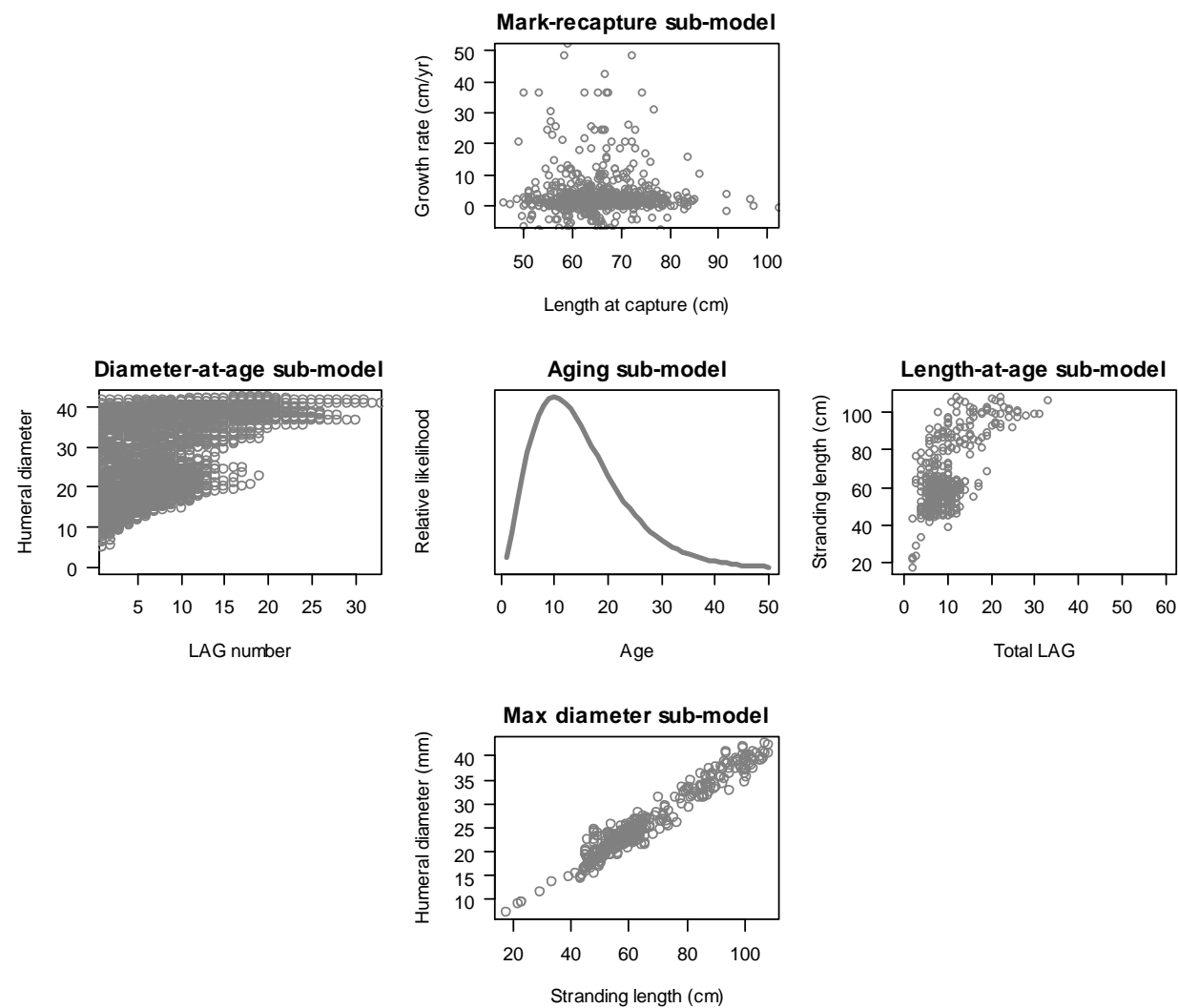


# Focus of Current Turtle Research



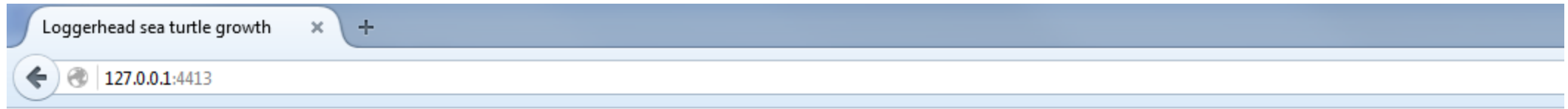
Integrated modeling

Stochastic processes



Integrated modeling

Stochastic processes



# Loggerhead sea turtle growth

[Input & Model](#) [Data & Results](#) **[Help](#)** [About](#) [Acknowledgements](#)

**[Introduction](#)** [Input & Model tab](#) [Data file formats](#) [Data & Results tab](#)

## Welcome to the Growth Shiny app

This is a web-based Shiny application based on the Growth R package.

*Click the "About" tab for more information about the Growth package.*

Start off by uploading the data files you wish to model, using the "Input & Model" tab. When your data files have been uploaded, you can run the model from this tab as well.

*Click "Input & Model tab" under "Help" for more information. To learn about format requirement for uploaded files, click "Data file formats."*

Once the model has been calculated, the "Data & Results" tab will open. Here you can examine your input data, the equations corresponding to sub-models, and the model results for each sub-model.

*For more information, click "Data & Results tab" under "Help".*

# Shiny interface

## Loggerhead sea turtle growth

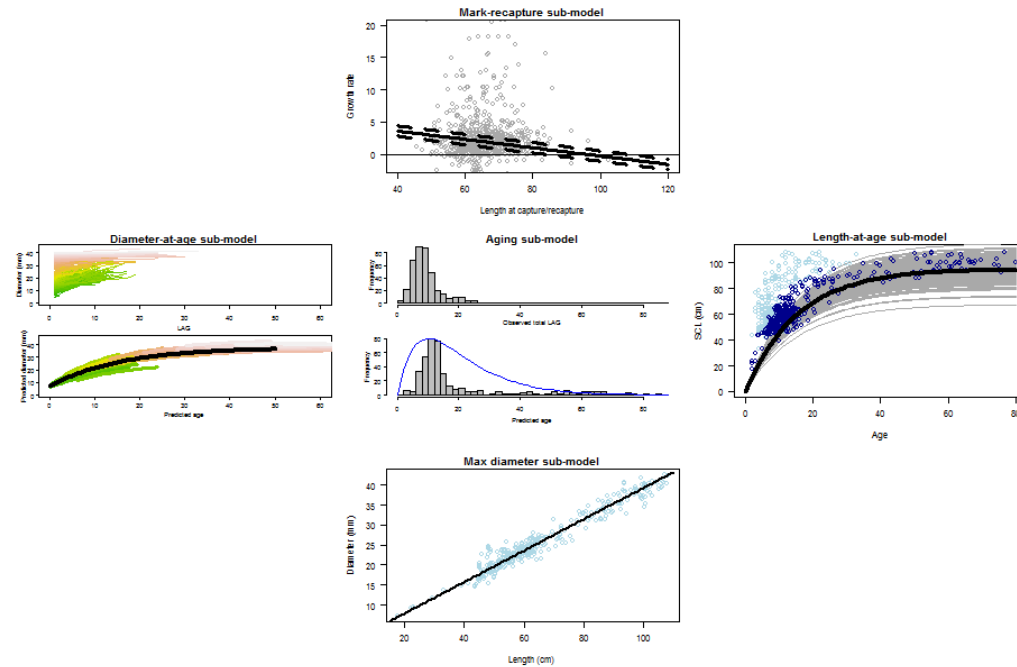
Input & Model Data & Results Help About Acknowledgements

Click to see data

Click to see model

Click to see results

Click results plot to enlarge or download it.

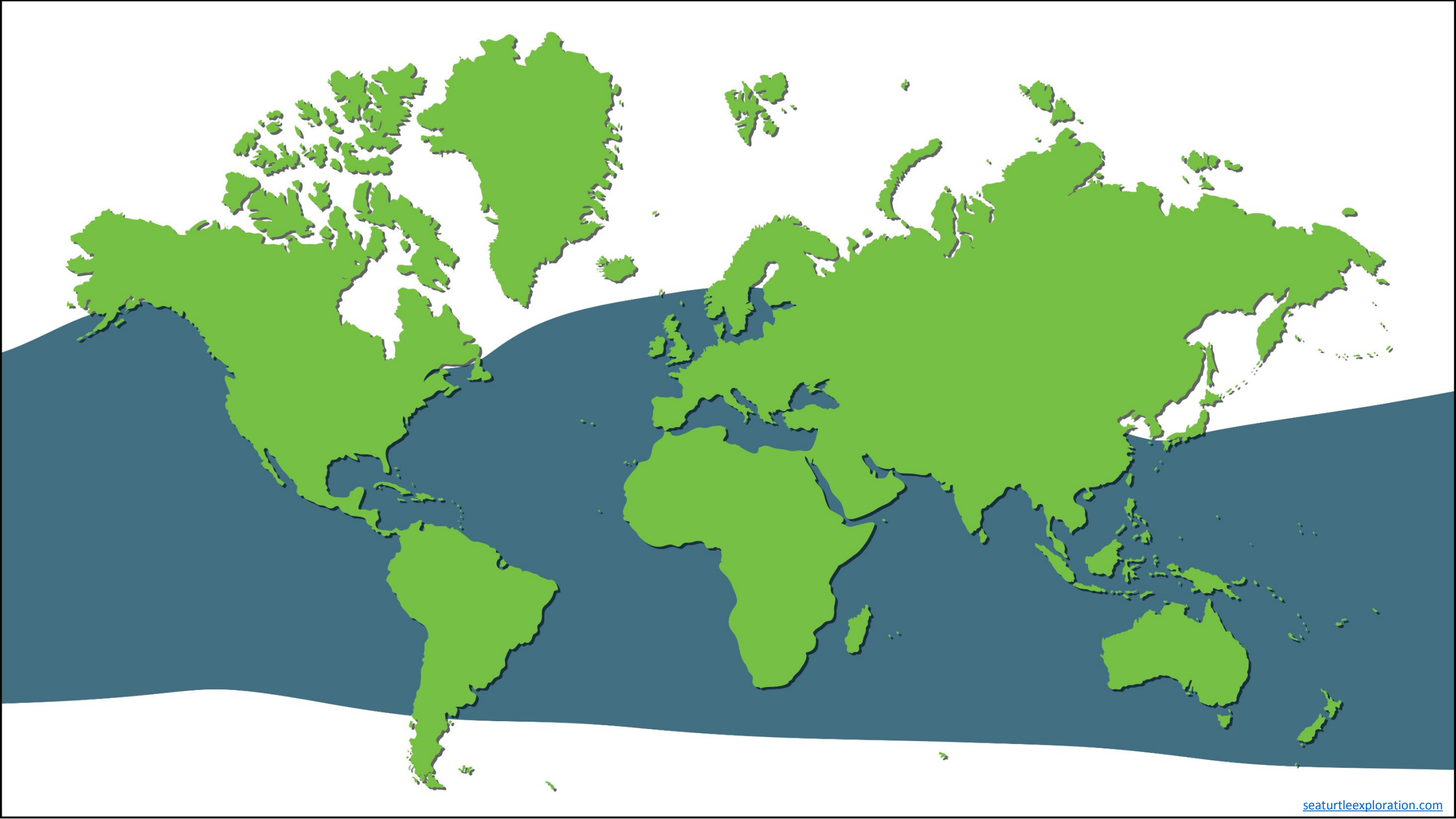


Shiny interface

An integrative model of sea turtle  
growth based on recoveries and  
mark-recapture data







Direct



# Mortality

In-direct

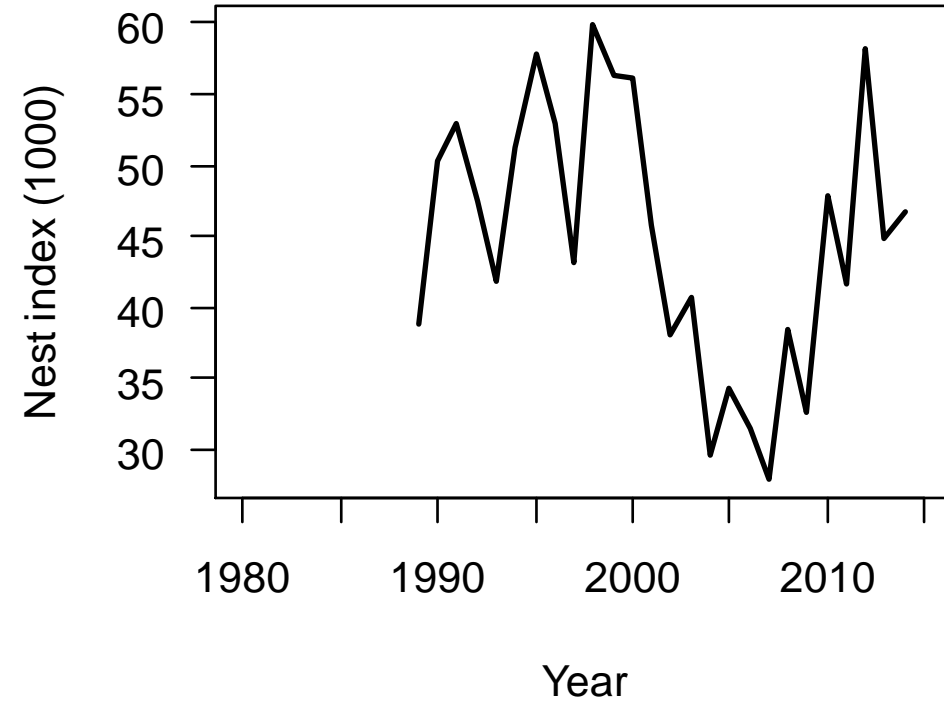


## Adult females



Nesting

## Time series of nest counts





## Adult females



Nesting

## Growth and maturation



Adult



Hatching

Pelagic/  
Juvenile



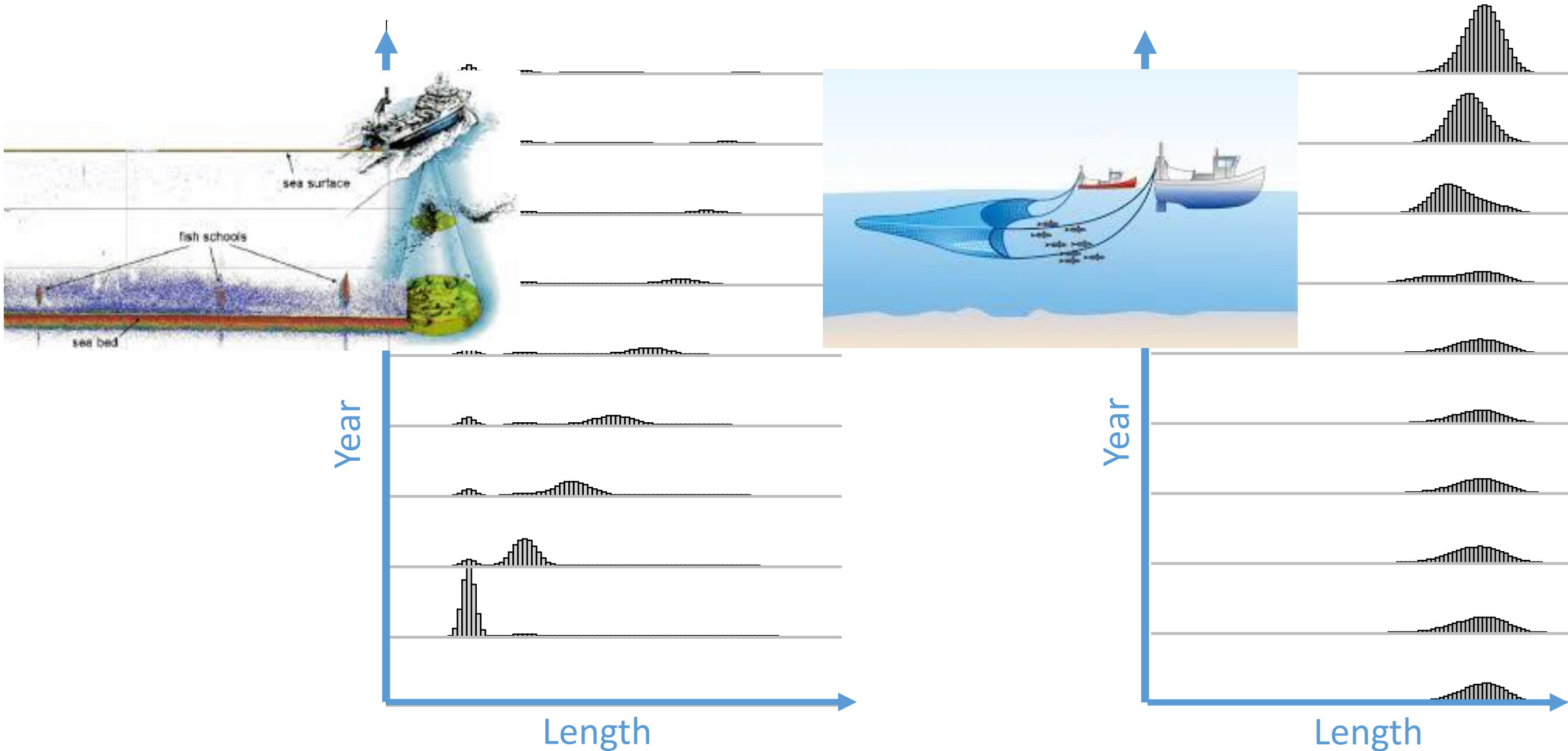
Neritic/  
Juvenile



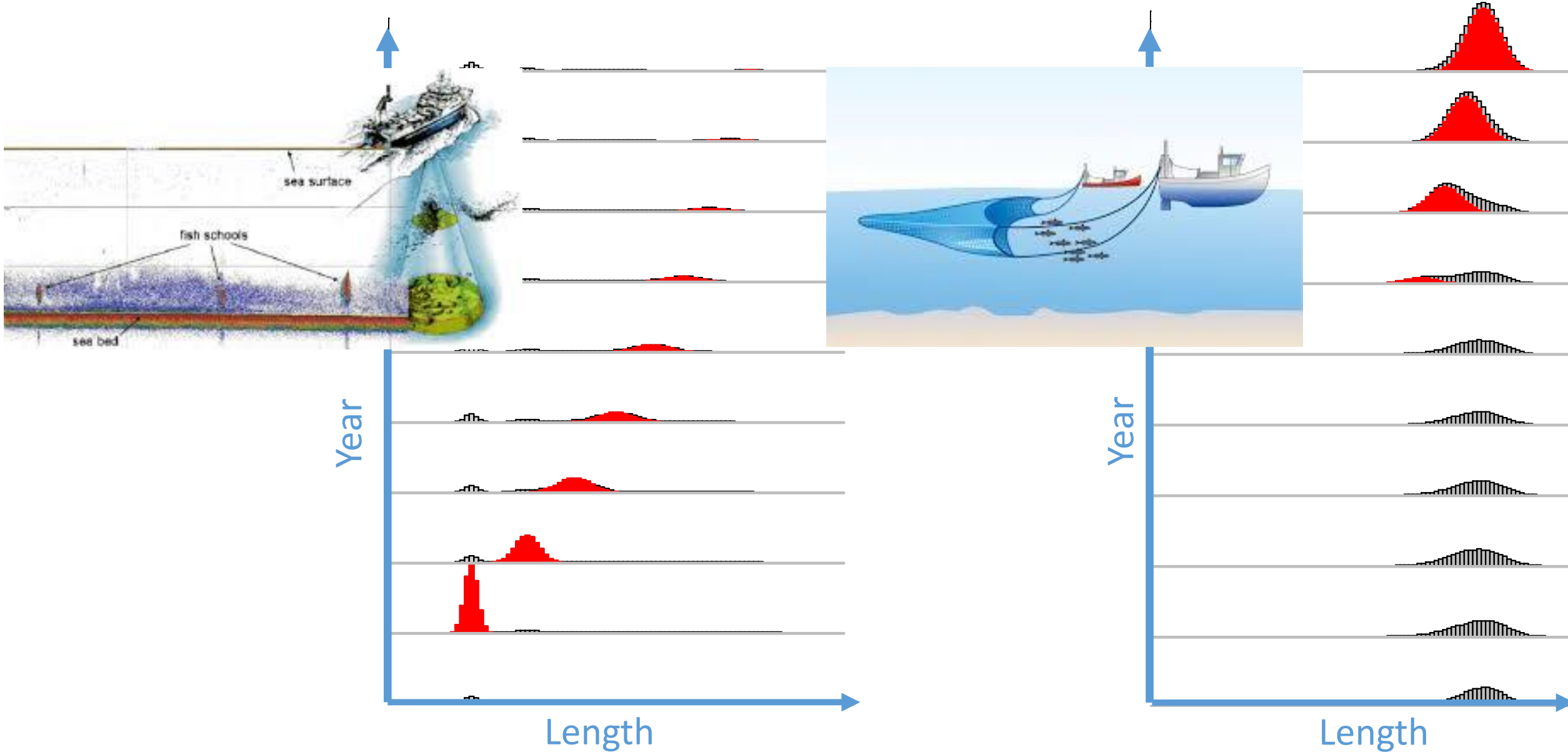
This PDF was later amended  
to make the document 508  
compliant.



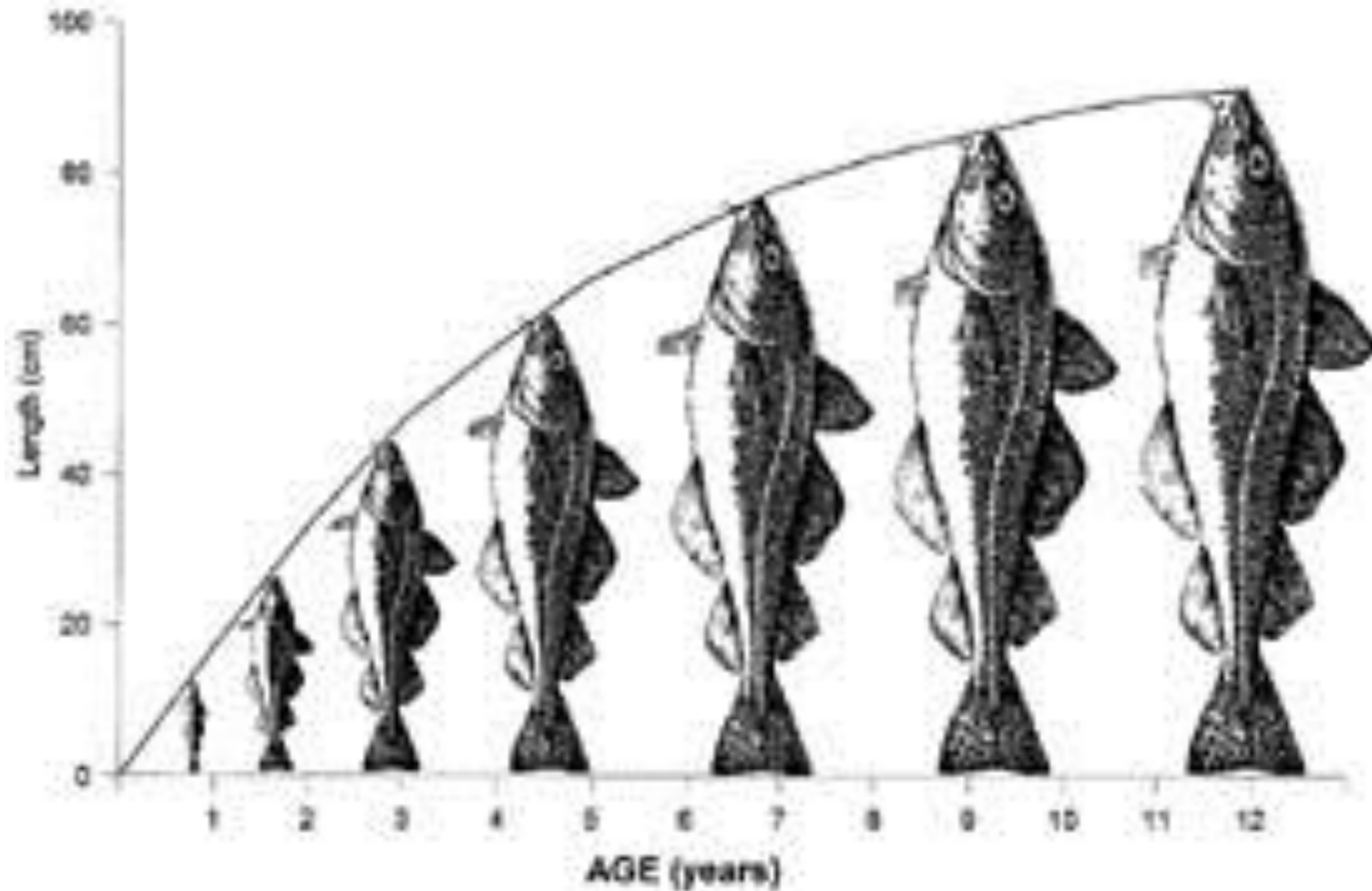
# Motivation for Current Turtle Aging Models Based on Fisheries Model



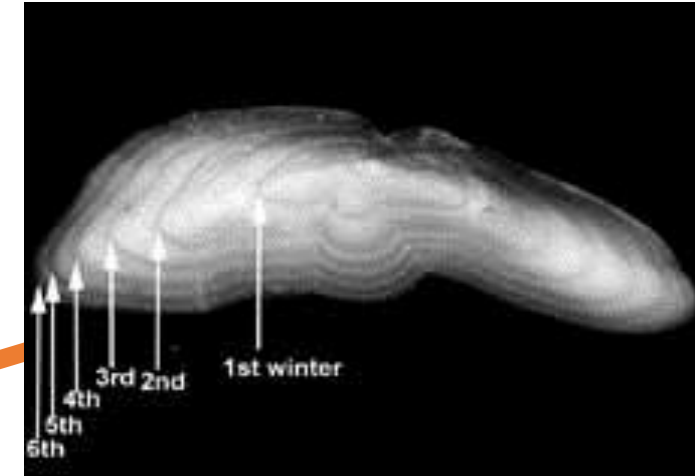
# Motivation for Current Turtle Aging Models Based on Fisheries Model



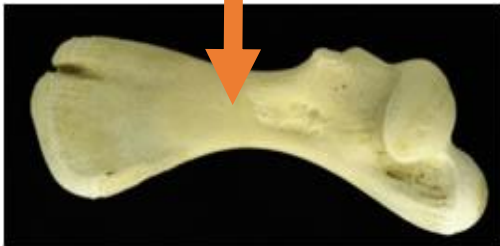
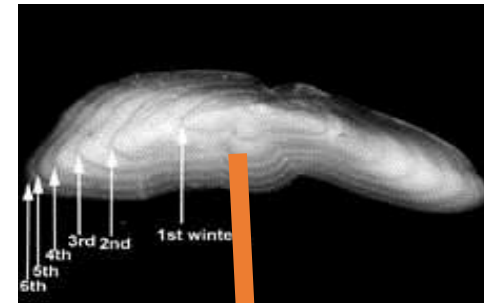
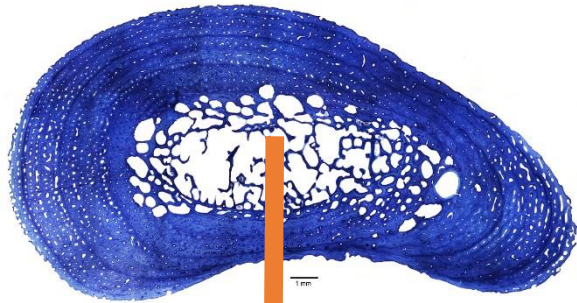
# Length-at-Age Relationships Are The Link In Integrated Fisheries Models

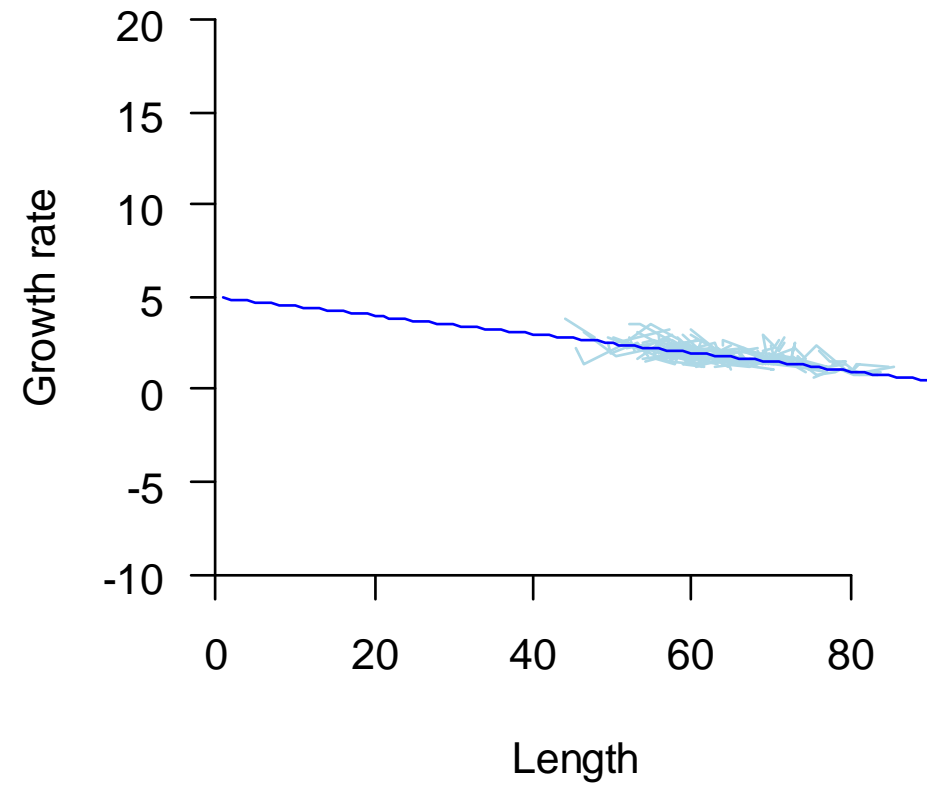
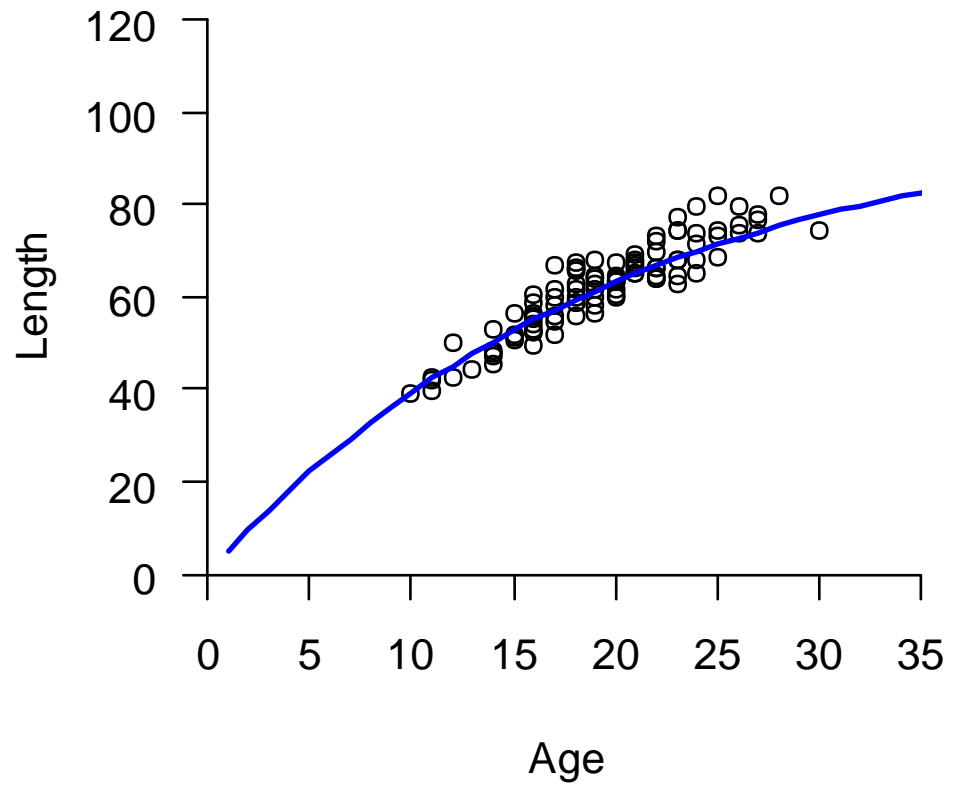
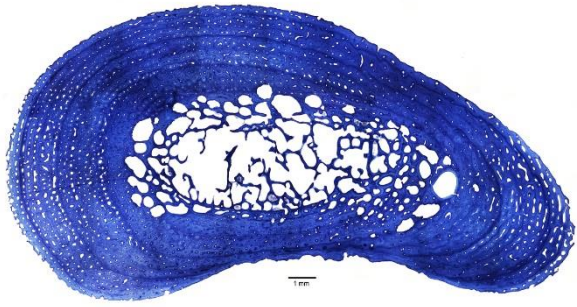


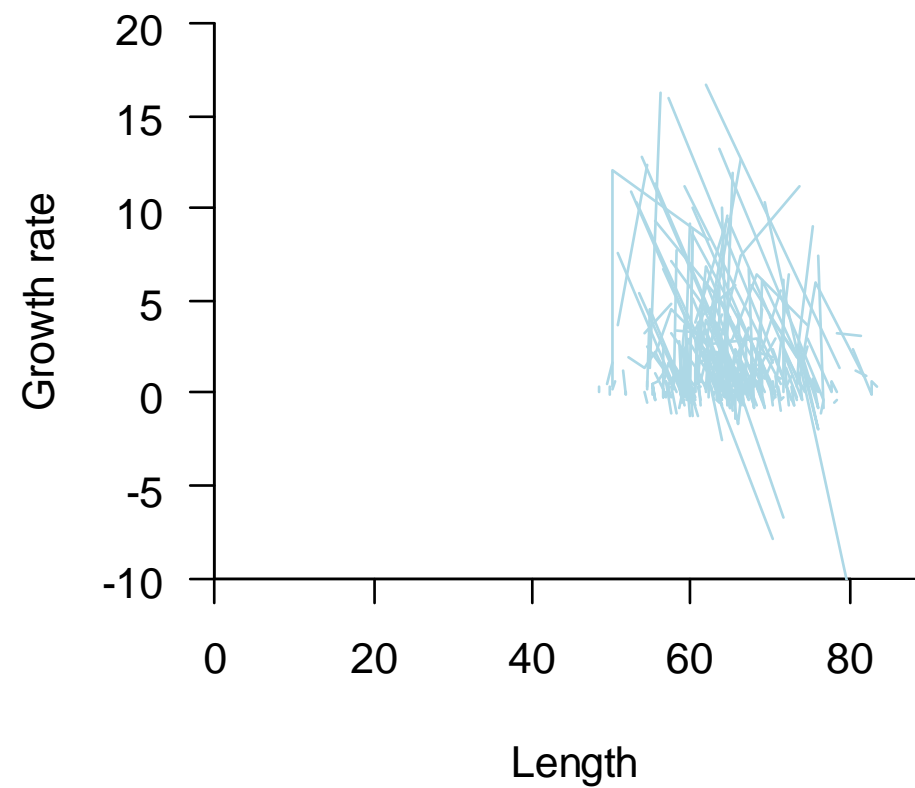
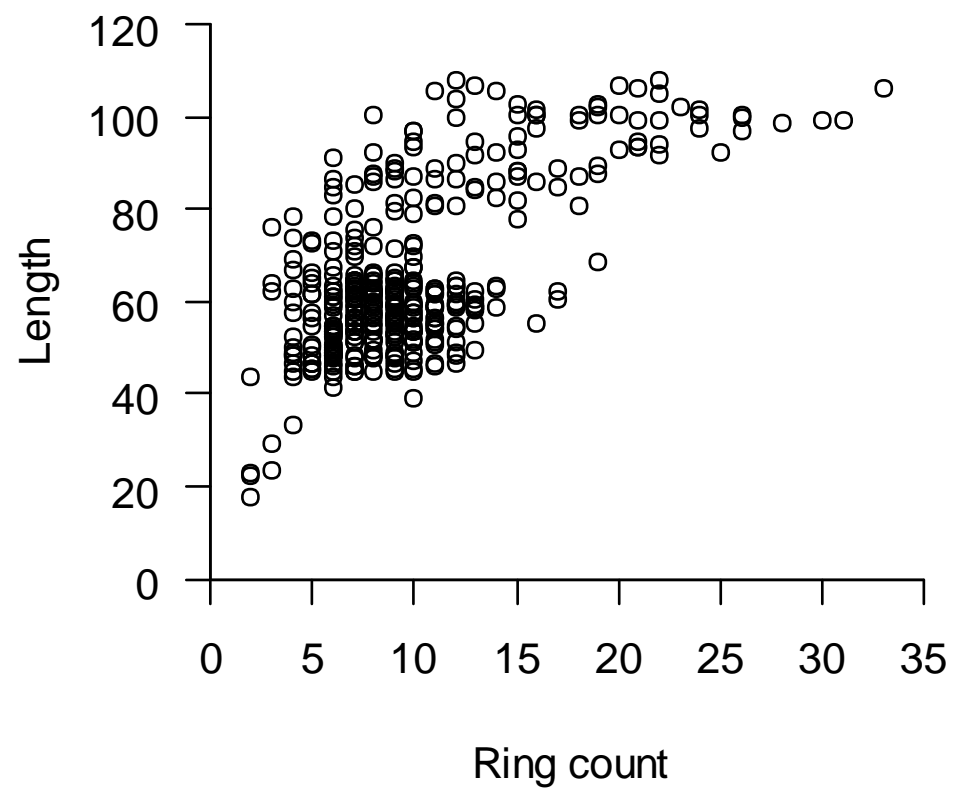
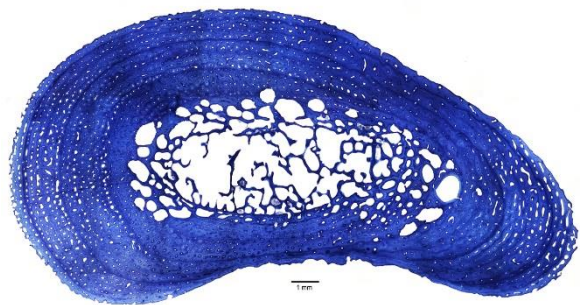
# Length-at-Age Relationships Are The Link In Integrated Fisheries Models



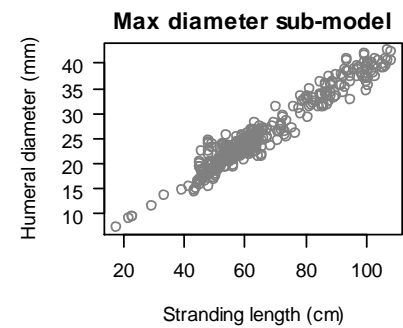
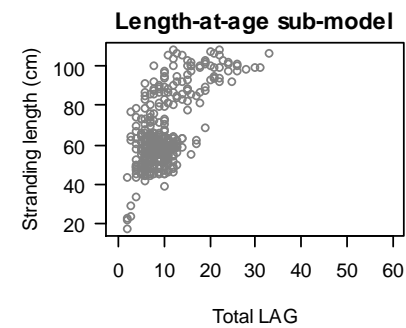
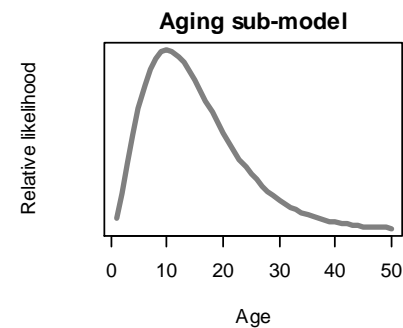
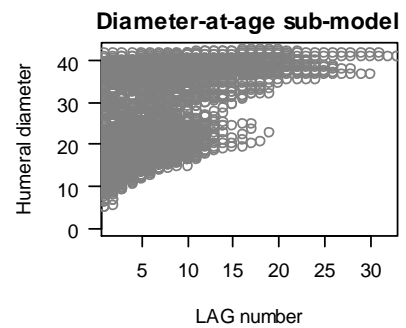
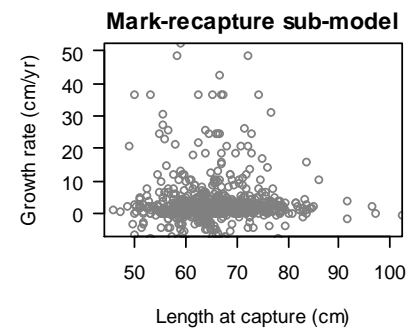
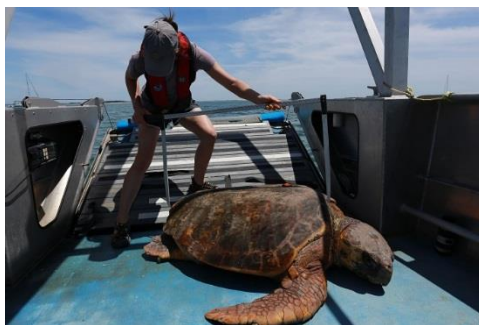
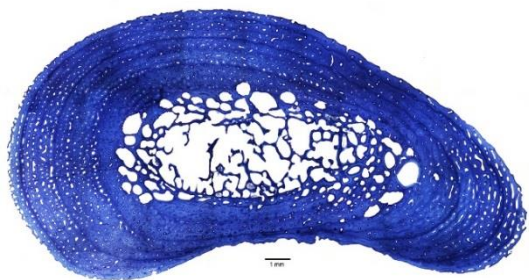
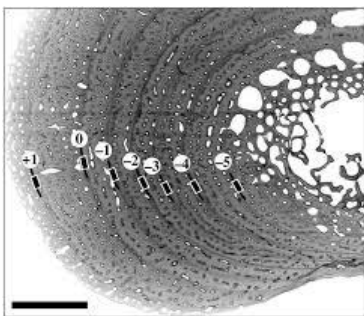






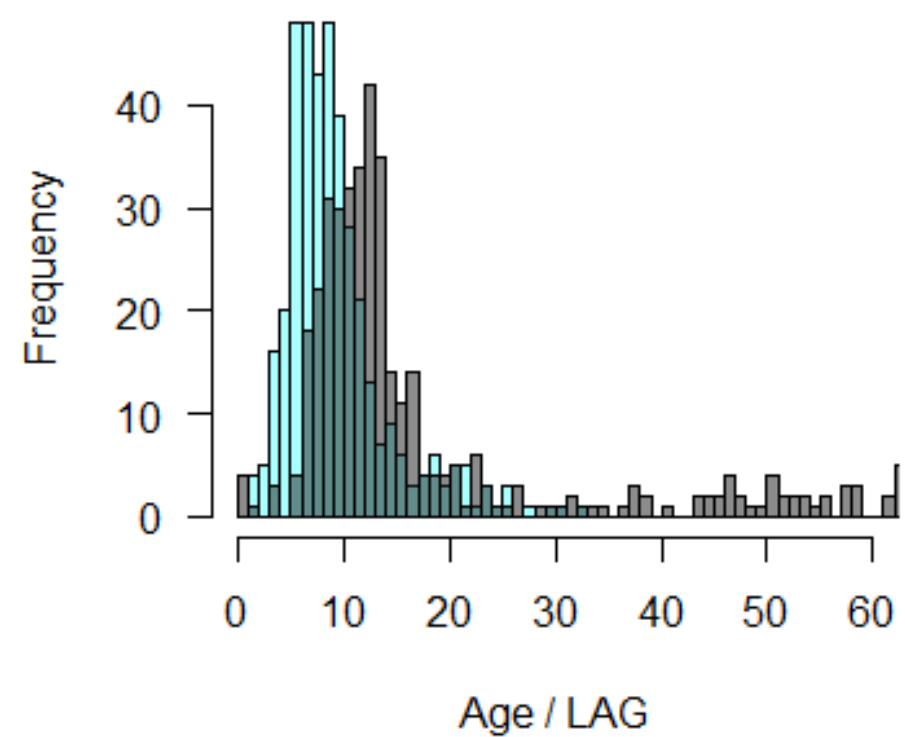
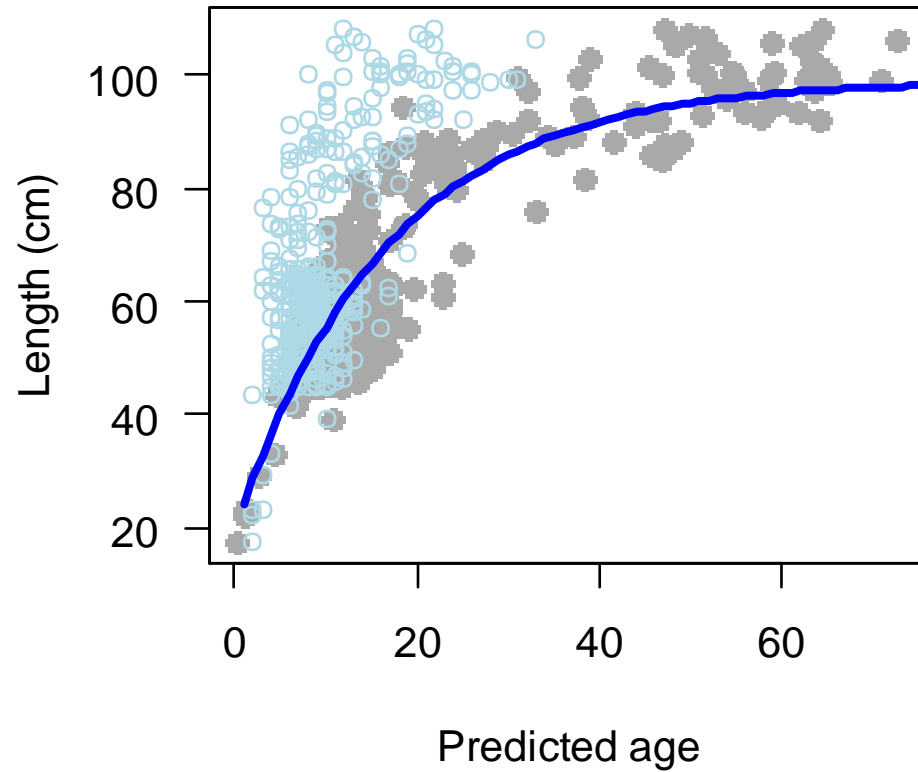




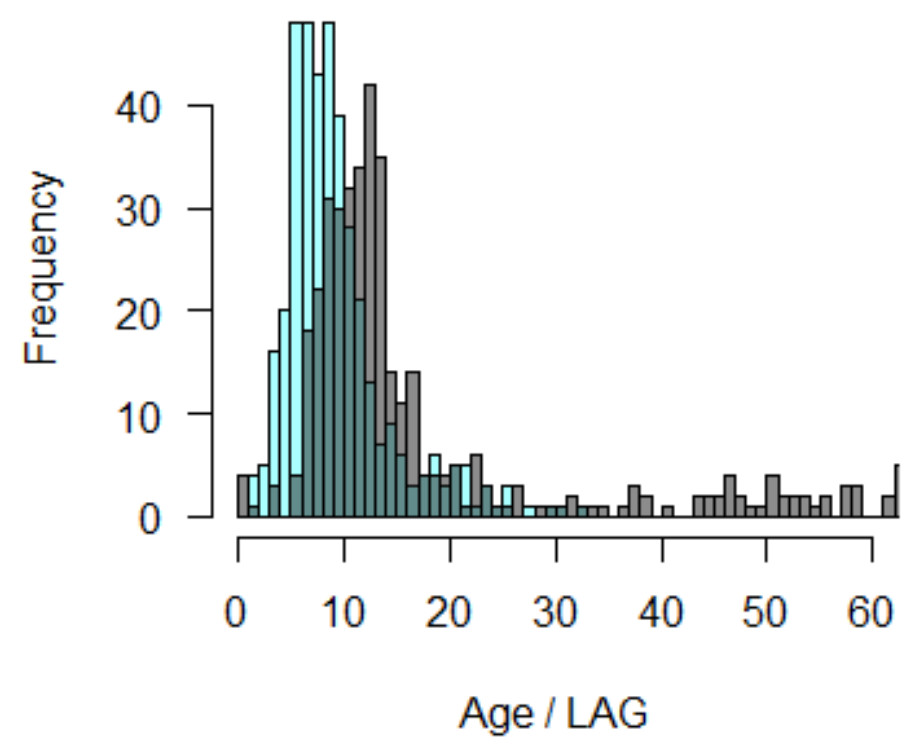
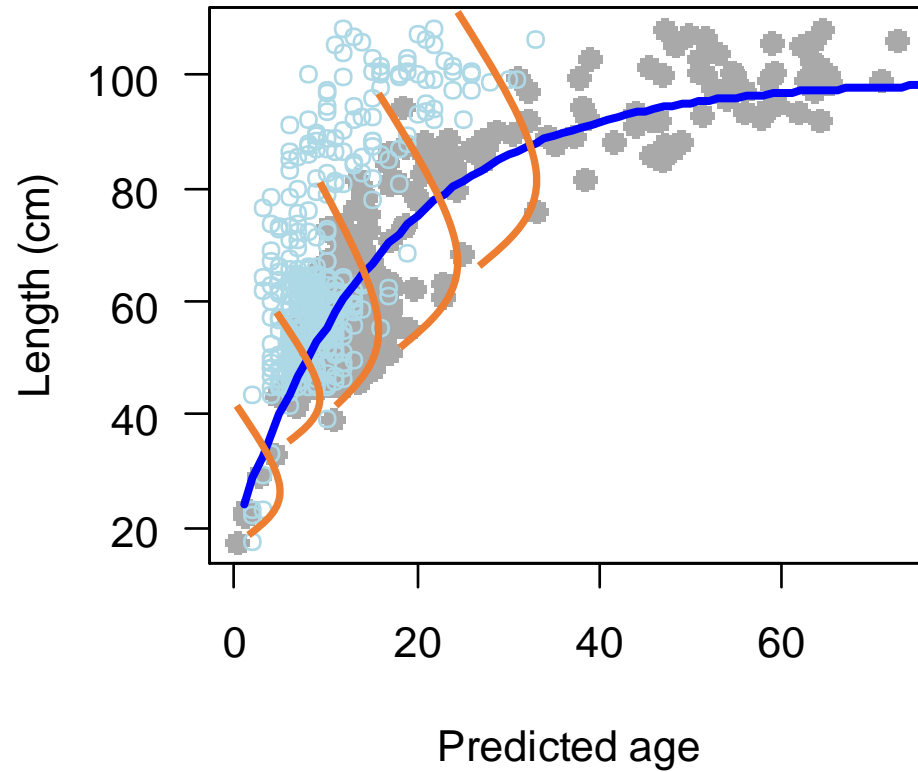




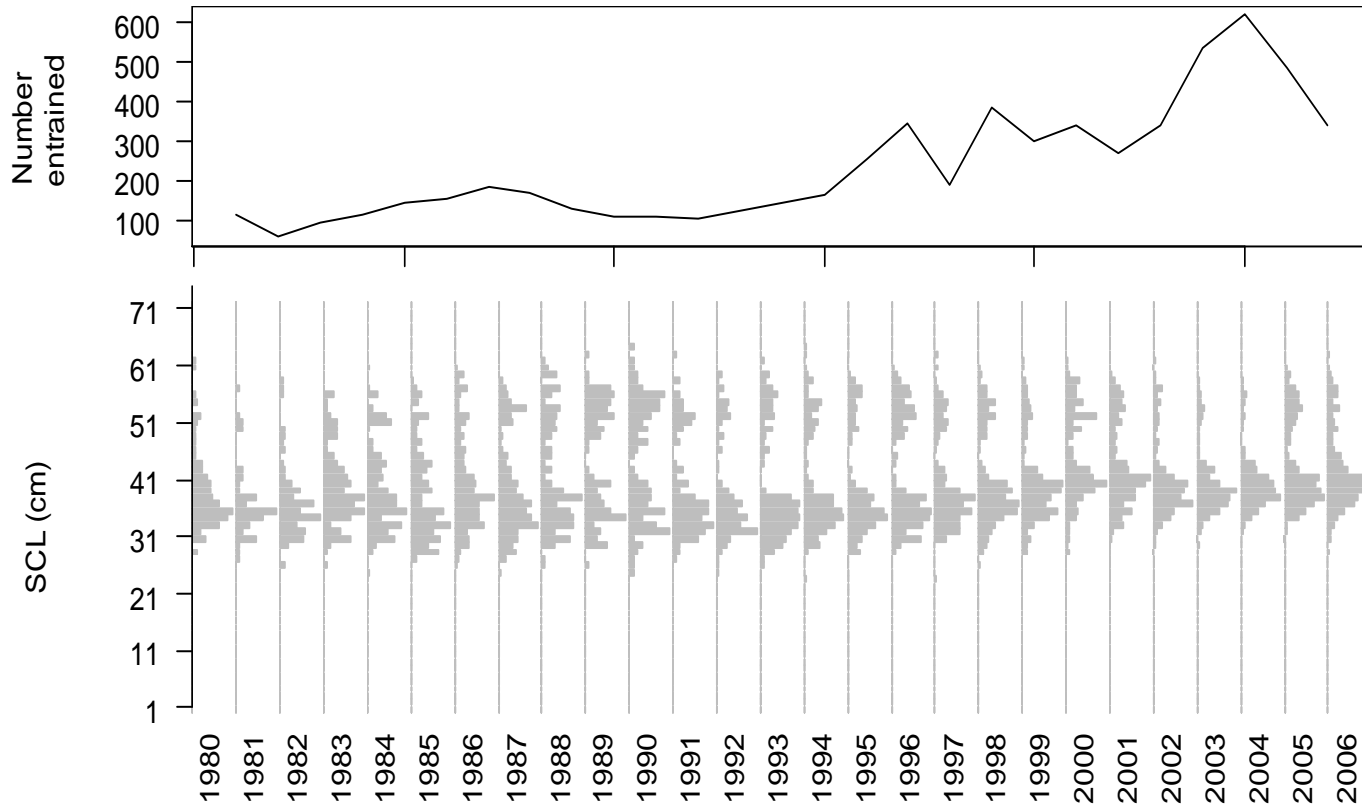
# Estimating The Length-at-Age Relationship And The True Age



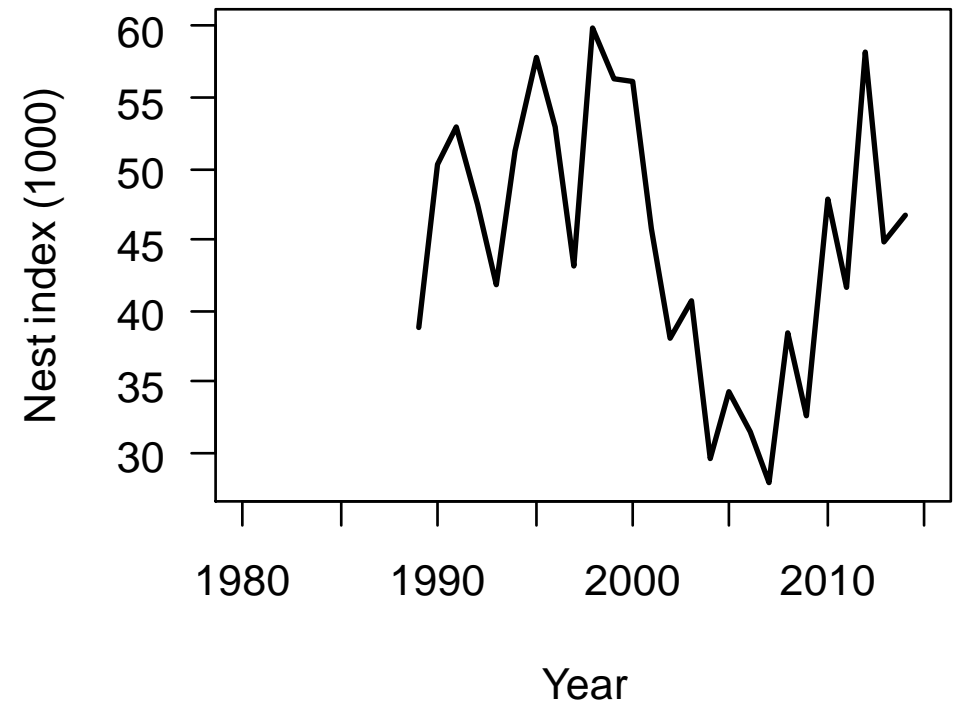
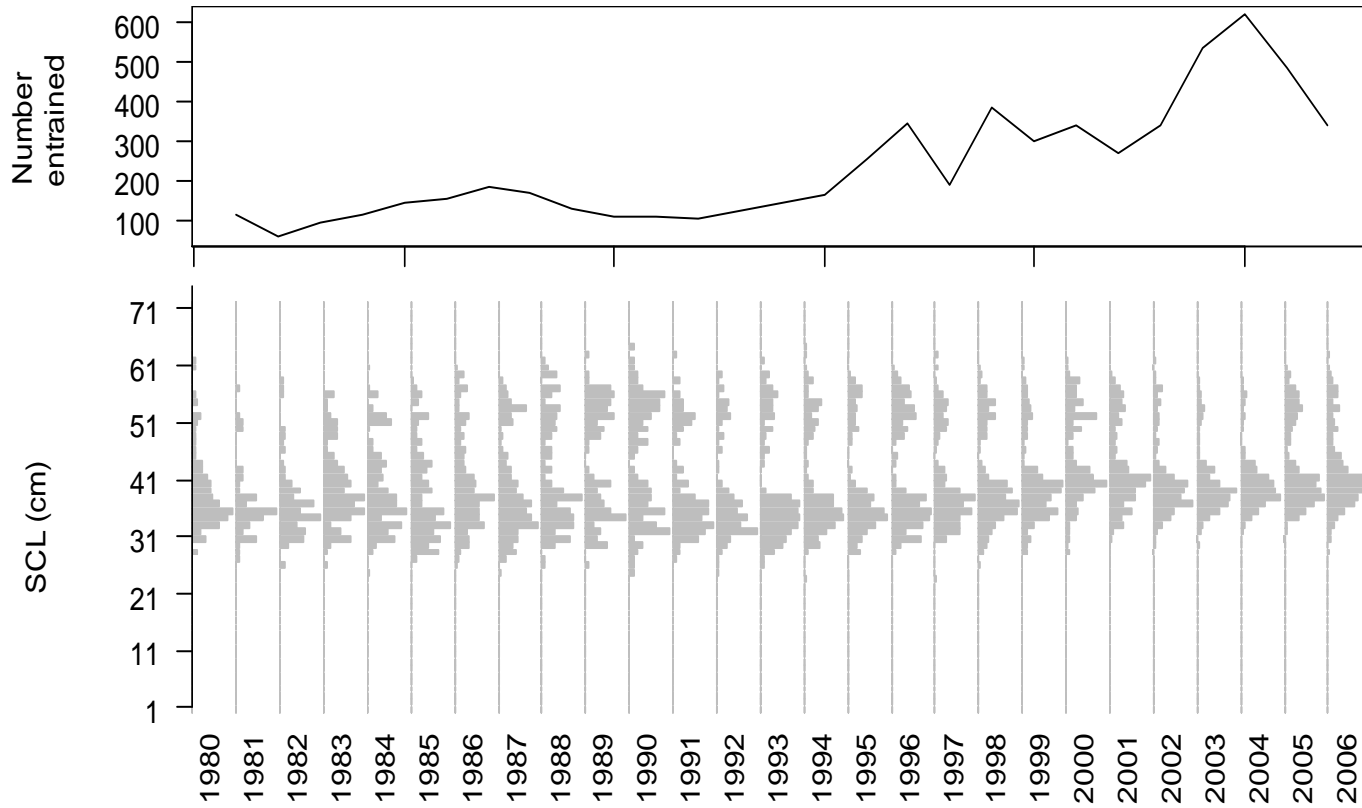
# Estimating The Length-at-Age Relationship And The True Age



# The Turtle Length Composition Data/Survey



# The Turtle Length Composition Data/Survey



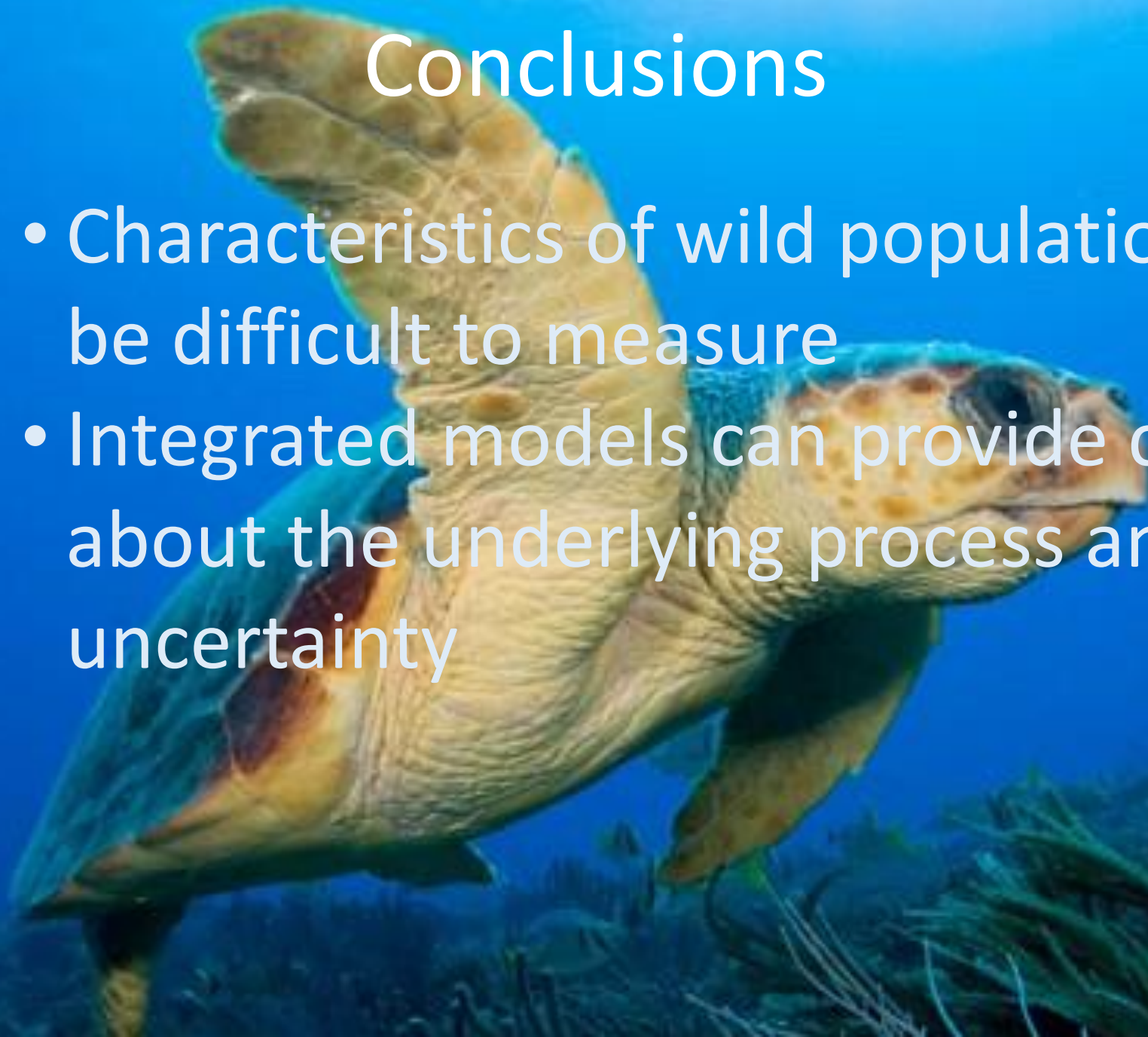


# Conclusions

- Characteristics of wild populations can be difficult to measure

# Conclusions

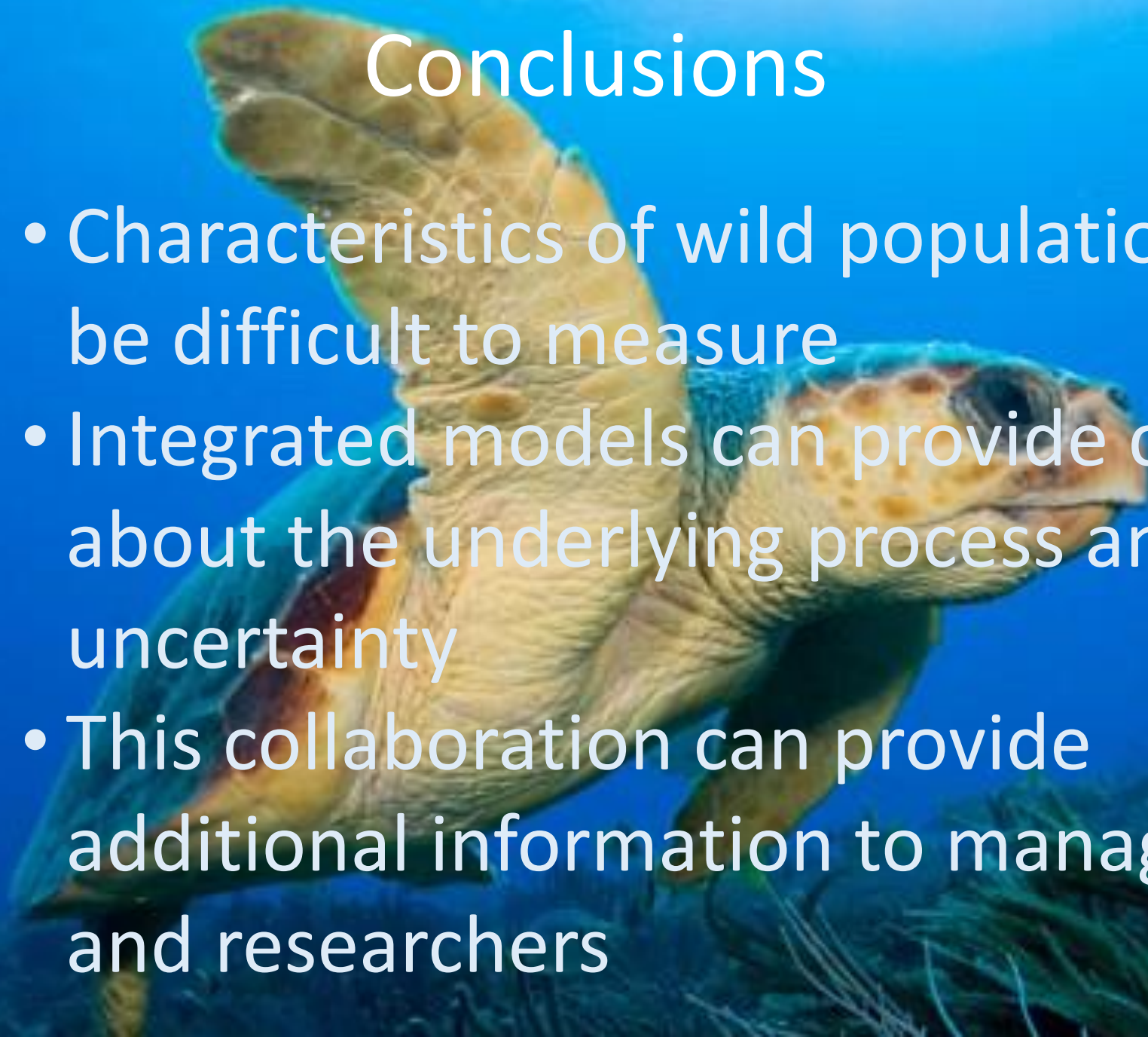
- Characteristics of wild populations can be difficult to measure
- Integrated models can provide clarity about the underlying process and uncertainty





# Conclusions

- Characteristics of wild populations can be difficult to measure
- Integrated models can provide clarity about the underlying process and uncertainty
- This collaboration can provide additional information to managers and researchers



## Next steps

- Incorporate stable isotope data
- We want to incorporate juvenile length based indices in the tool
  - Fishery dependent
  - Fishery independent





This PDF was later  
amended to make the  
document 508  
compliant.

Questions?