

Welcome! Say hello + work out your technology

We will begin at 9:15



Team Members: In the meantime, check your email to read a draft “framing” document shared from the NMFS email. We will be walking through this later this morning.

Tips for Using Zoom

- ✓ **If you don't have optimal internet connection, join the meeting via computer for video & opt to dial in via phone for audio.**
 - When you are dialing in, please be sure to enter your participant ID.
- ✓ **Mute when not speaking.**
- ✓ **Rename yourself** in the Participants tab with First & Last Name, Your Affiliation.
In front of your name:
 - Team members: put * // Alternates: put *ALT
- ✓ **Bring a tech-adaptive mindset** as we work to maximize engagement in this online setting!



...We'll formally begin the meeting at 9:15 AM

Attendee Controls



Participant

Mute and unmute yourself

Turn your camera on or off

Open Participants tab

Chat host only

Raise hand for questions/comments

Participants (1)

Participant (me)

Change your screen name to First name Last Name, Affiliation

Invite Unmute Me Claim Host

Chat

Direct your chat to a specific person

To: Everyone

Type message here...

Unmute Start Video Participants Chat Share Screen Record Reactions Leave

Yes No Slower Faster Raise Hand

If you have any tech issues, contact Cam Hager in chat or through e-mail at chager@cbi.org

* Note- you will have to remember to put your hand down after you have spoken or it will remain up.



NOAA
FISHERIES

Atlantic Large Whale Take Reduction Team

Day 6: December 2, 2022

Today's Agenda (Friday, Dec 2)

9-9:15	Welcome
9:15-10	Review emerging coastwide approach
10-10:30	Break and reading time
10:30-11:30	Focused conversation on topics <ul style="list-style-type: none">• Ropeless• MRA
11:30 AM - 12:30 PM	Taking stock of a coastwide package at this stage Accurately capturing the Team's thinking
12:30-1:30	Lunch
1:30-4:30	Refining package Refining framing document Testing for consensus on coastwide recommendations <i>(breaks and breakouts as needed)</i>
4:30-5	Public comment, wrap up and next steps

Ground Rules for Team Members



Discussion protocols:

- Contribute - need to build shared understanding
- Make room for others - need to hear from all
- Ask questions of one another - no easy answers
- Make good faith effort to collaborate - patience, open ears and minds
- Not seeking consensus this week

Agency not recording to encourage candor; media may be present

To contribute to the discussion:

- Primary members
 - **Encouraged** to keep your cameras on and stay on mute unless speaking
 - Raise a virtual “hand” (remember to put it down after)
 - Chat to host only with issues (emoji reactions available)
- Alternates
 - In plenary, engage as public unless sitting in for primary
 - In cross-caucus breakouts, alternate generally in the same room as primary

Ground Rules for Public Attendees



Public welcome to attend all plenary sessions

Comment protocols - opportunity each day

- **Input welcome during public comment portion**
 - Share thoughts in chat or via comment during that time
 - Please keep all comments on-point and respectful
- **Please remain on mute and video off at other times**
- Intent is to **manage public input as if we were all in room together**

To contribute during Public Comment period

- Raise a virtual “hand” or signal interest in chat



NOAA
FISHERIES

Review Emerging Coastwide Approach

Emerging Lower Bound Package with LMA 3 Discussion Example

Package	Regional Line Reduction	Regional Co-Occurrence Reduction	Regional Risk Reduction
LMA1 Lobster (TrapPot)	34.0%	80.0%	89.8%
LMA 2 Trap/Pot	44.0%	71.1%	86.0%
LMA 3 Trap Pot Exploratory Pkg	53.3 %	63.8%	71.3%
OCC Trap/Pot	3.9%	29.9%	52.9%
LMA 4 & 5 Trap/pot	24.6%	24.2%	58.1%
GOM/SNE Gillnet	1.2 %	44.2%	73.3%
Mid-Atlantic Gillnet	9.1%	3.5%	60.3%
Southeast	0.0%	0.0%	0.0%
Totals		75.1%	84.7%

Emerging Upper Bound Package with NMFS LMA 3 With Additional Mods

Package	Regional Line Reduction	Regional Co-Occurrence Reduction	Regional Risk Reduction
LMA1 Lobster (Trap/Pot)	34.0%	80.0%	89.8%
LMA 2 Trap/Pot	44.0%	71.1%	86.0%
LMA 3 Trap Pot NMFS additions	51.9%	85.7%	88.6%
OCC Trap/Pot	3.9%	29.9%	52.9%
LMA 4 & 5 Trap/pot	24.6%	24.2%	58.1%
GOM/SNE Gillnet	1.2 %	44.2%	73.3%
Mid-Atlantic Gillnet	9.1%	3.5%	60.3%
Southeast	0.0%	0.0%	0.0%
	Totals	76.7%	87.6%

Emerging Upper Bound Package with NMFS LMA 3 with Additional Mods and Shoulder Gear Reductions Around Lobster Lines-Out Closures

Package	Regional Line Reduction	Regional Co-Occurrence Reduction	Regional Risk Reduction
LMA1 Lobster (TrapPot)- includes shoulders	34.7%	80.7%	90.2%
LMA 2 Trap/Pot- includes shoulders	45.3%	73.1%	86.9%
LMA 3 Trap Pot NMFS additions	51.9%	85.7%	88.6%
OCC Trap/Pot- includes shoulders	4.0%	32.6%	54.9%
LMA 4 & 5 Trap/pot	24.6%	24.2%	58.1%
GOM/SNE Gillnet	1.2 %	44.2%	73.3%
Mid-Atlantic Gillnet	9.1%	3.5%	60.3%
Southeast	0%	0.0%	0.0%
	Totals	77.4%	88%

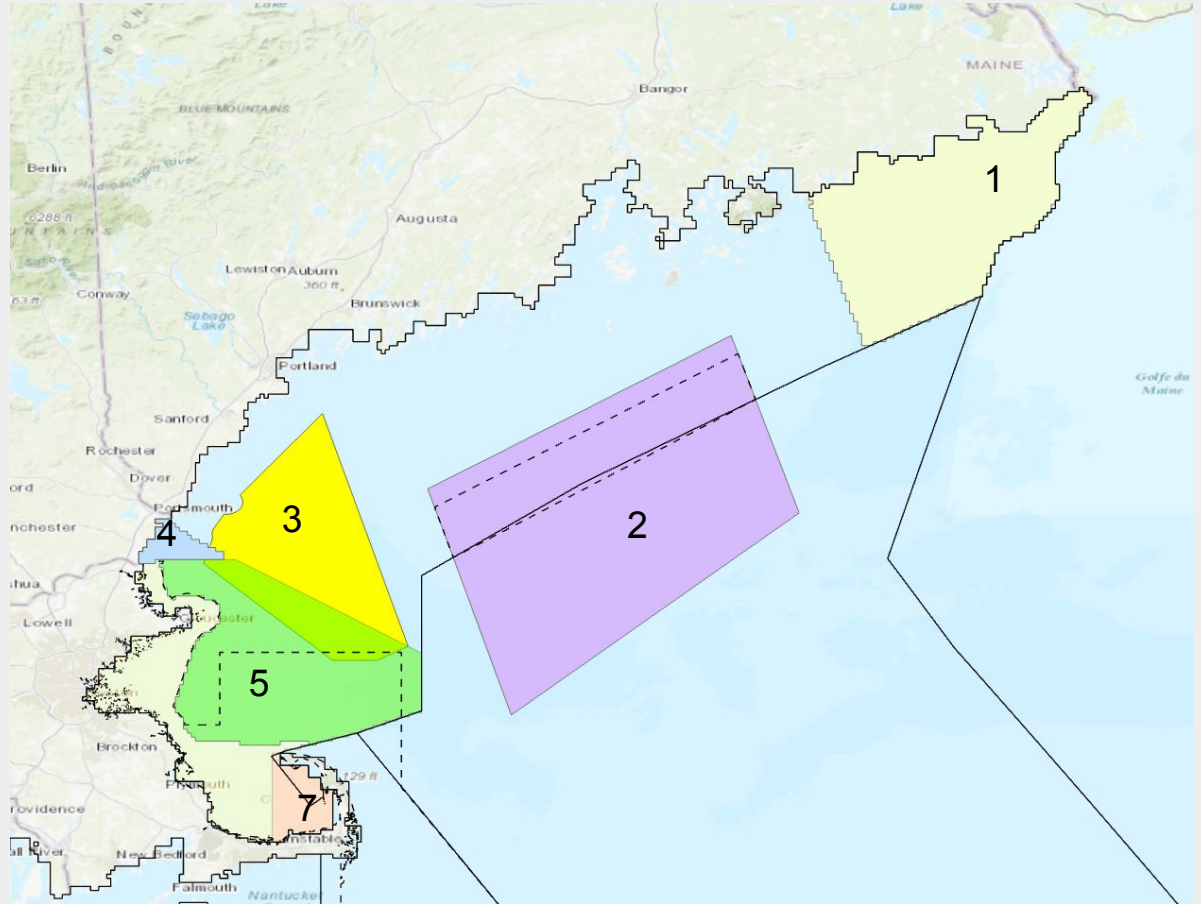
LMA 1 Lobster Dec 1 Base Package

Line Reduction	Closures to vertical buoy lines	Weak Rope	Coastwide Risk Points	Regional Risk Reduction	Total Regional Co-Occurrence Reduction
Gear Cap of 400 Traps for all vessels in Maine lobster zones;	Maine Zone A; 100% Lines-Out June - July	0 - 50 Fathoms: 100% Weak* @ 1,700 Both Ends;	27 (out of 34)	LMA: 89.8	LMA: 80.0
Line Cap @ 30 Lines in Maine Zone G / Jeffreys Ledge Polygon Nov - Dec.	LMA1 Closure Expansion Oct - Jan*	50 - 100 Fathoms: Hauling Line: 100% Weak* @ 1,700 lbs; Tag Line: 100% Weak @ 600 lbs;		Maine: 88.6 NH: 90.9 Mass: 91.8	Maine: 77.6 NH: 80.1 Mass: 84.3
TrawlUp to 10 in Mass LMA1 State waters Dec - Jan.	Maine Zone G / Jeffreys Ledge Jan - May	100+ Fathoms: Hauling Line: 33% Weak @ 1,700 lbs; Tag Line: 100% Weak @ 600 lbs;			
TrawlUp to 15 in Mass LMA1 3-6 miles	Closure NH State and Adjacent Federal Waters March - April	*100 percent weak (weak inserts every 60 feet or weak rope down to bottom 30 feet).		LMA: 90.2	LMA: 80.7
TrawlUp to 20 in Mass LMA1 6 - 12 miles	Mass 514 Federal Waters; Lines Out Feb - May 31	Added value for Ramp Down / Ramp Up before / after Gear-Out Closures (one week full value)		Maine: 88.8 NH: 91.0 Mass: 92.6	Maine: 77.9 NH: 80.2 Mass: 85.9
	Maine Zone A Jun-Jul or expanded, managed dynamically and with CE to achieve at least 80% of value of the closure (89% to LMA)			LMA: 89%	

LMA 1 Seasonal Closures to vertical buoy lines

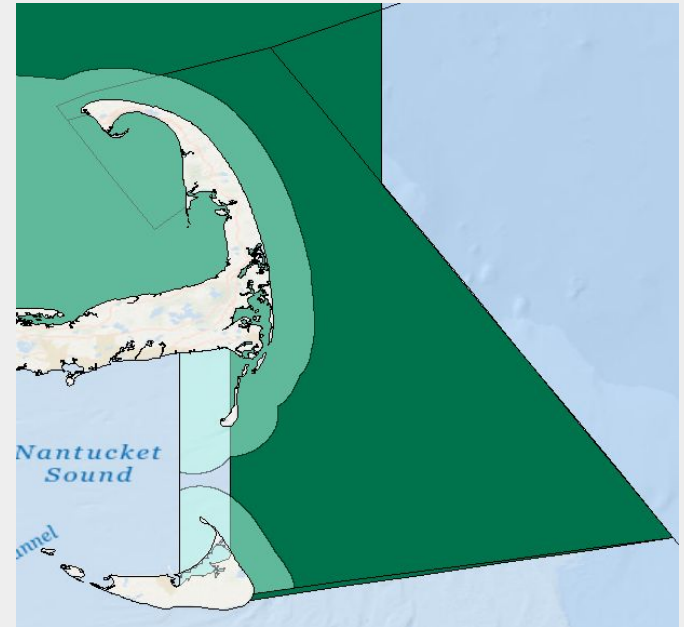
1. Maine Zone A - June - July
2. LMA1 Restricted Area Expanded; Oct. - Jan.
3. Maine Zone G / Jeffreys; Jan. - May.
4. NH Waters; March - April
5. Mass StatArea 514 Fed; Feb. - May
6. Mass State Waters; Feb. - May
7. Cape Cod Bay East; Dec. - May.

Existing closures shown with a dashed line.



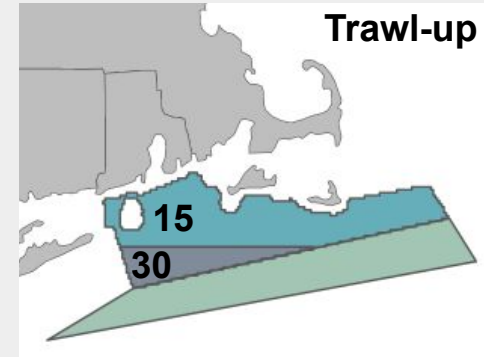
Trap/Pot: Outer Cape Cod

Closures to vertical buoy lines	Weak Rope	Coastwide Risk Reduction Points	Regional Risk Reduction	Regional Co-Occurrence Reduction
Close all Federal Waters Jan - Apr	75% Weak Rope	0.2 (out of 0.5)	53%	30%



Trap/Pot: LMA 2 & 2/3 Overlap

Line Reduction	Closures	Weak Rope	Coastwide Risk Reduction Points	Regional Risk Reduction	Regional Co-Occurrence Reduction	Regional Line Reduction
<ul style="list-style-type: none"> - 15 traps/trawl to 41° - 30 traps/trawl South of 41° - Remove one endline Year-Round 	<ul style="list-style-type: none"> - Close A2 & 2/3 Overlap Jan 15 - Apr 30 - Extend SIRA closure to Jan 15 	<ul style="list-style-type: none"> - 100% Weak Rope 	2.7 (out of 3.6)	86%	71%	44%
	<ul style="list-style-type: none"> - Added value for Ramp Down / Ramp Up before / after Gear-Out Closures (one week full value) 		2.7 (out of 3.6)	87%	73%	45%



*Note- Exempt waters are NOT part of closure- artifact of mapping.

Trap/Pot: LMA 3

Package 1 put together by regional caucus

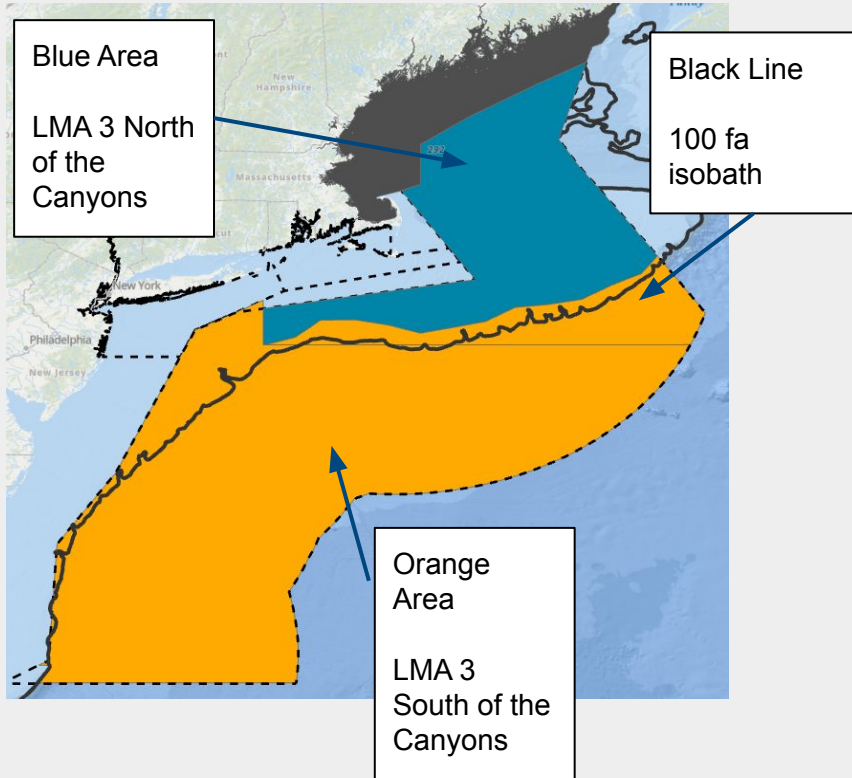
- All percent values are relative to LMA 3 Trap Pot Fisheries only
- **Approximately 9.7 remaining regional risk points**

Line Reduction	Closures to vertical buoy lines	Weak Rope	Coastwide Risk Reduction Points	Regional Risk Reduction	Regional Co-Occurrence Reduction
<ul style="list-style-type: none"> - Line cap for LMA 3 lobster set at 60 - Requirement to fish with one endline in LMA 3 North of Canyons year round - Requirement to fish with one endline in LMA 3 South of Canyons thru Mid-Atlantic: <ul style="list-style-type: none"> - In depths less than 100 fa: Fishing with one endline year round - In depths greater than 100 fa: Fishing with one endline (May-Sept) 	<ul style="list-style-type: none"> - Georges Basin Expansion Area (Apr-Jul) - Georges Banks Corridor East Shelf Edge (Apr-Jul) - LMA 1 Restricted Area to Cashes Ledge (Oct -Feb) - South Island Restricted Area (Jan-Apr) 	<p>All rope is 33% weak with max 1700 lb breaking strength</p>	<p>4.7 (out of 9.7)</p>	<p>71%</p>	<p>64%</p>

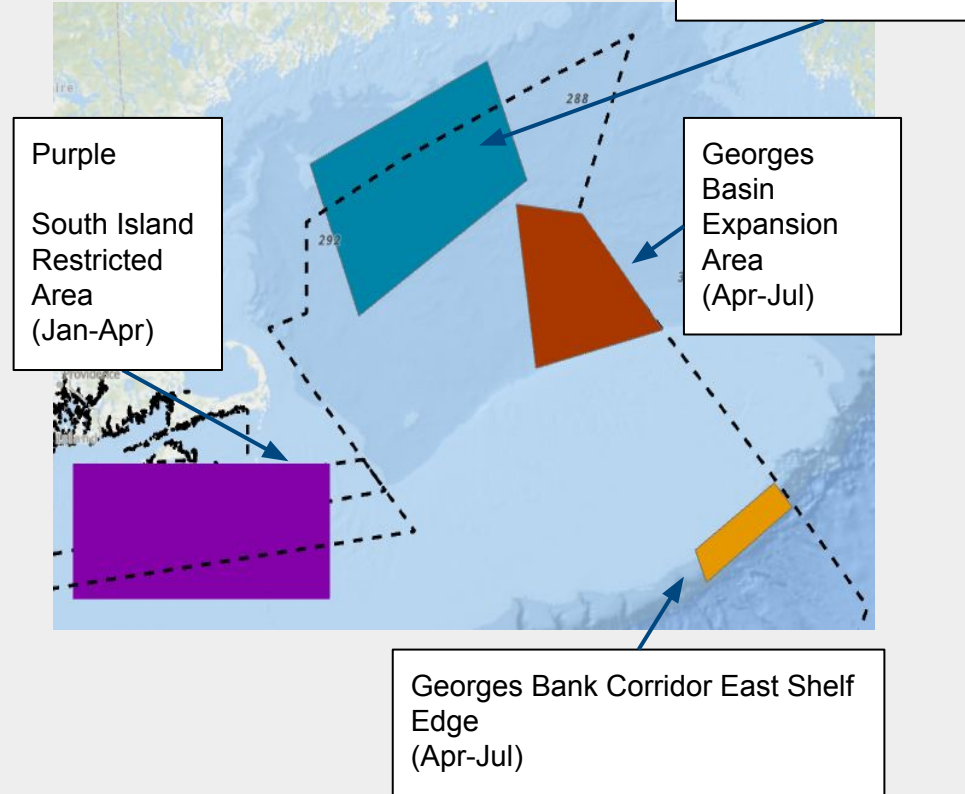
Trap/Pot: LMA 3 Package Maps

Package 1 put together by regional caucus

Areas with restrictions for fishing with one endline



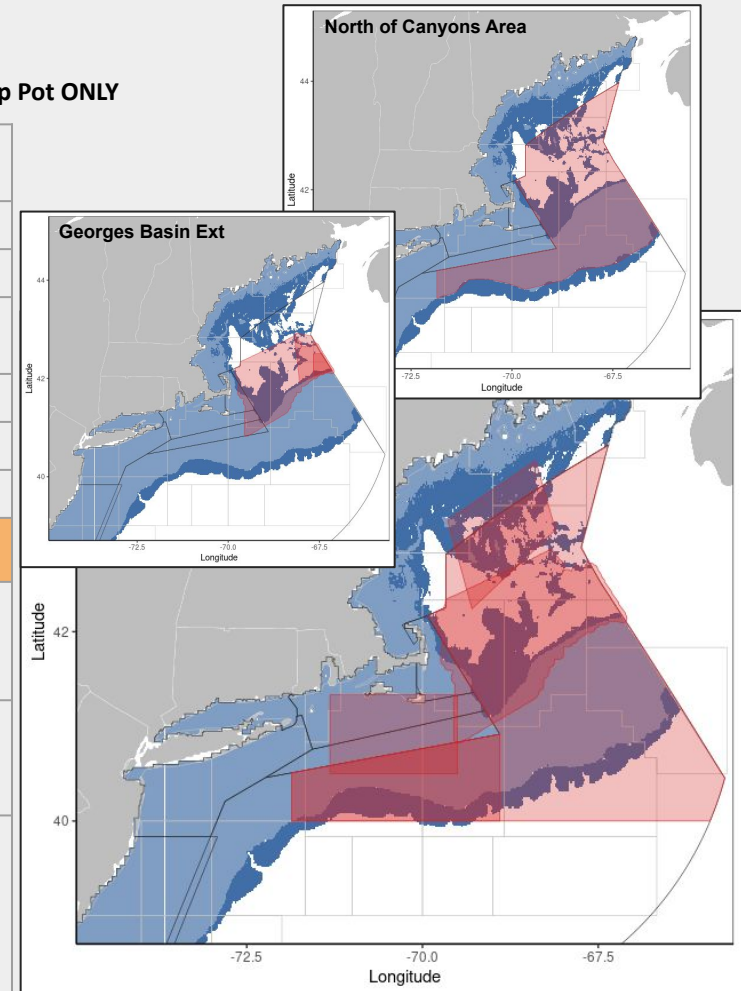
Restricted Areas



Trap/Pot: Lobster Management Area 3

Risk and co-occurrence reduction values for each individual measure are relative to LMA 3 Trap Pot ONLY

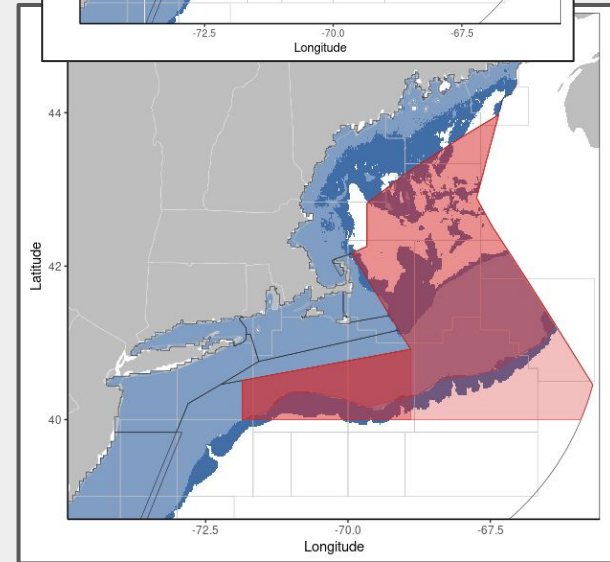
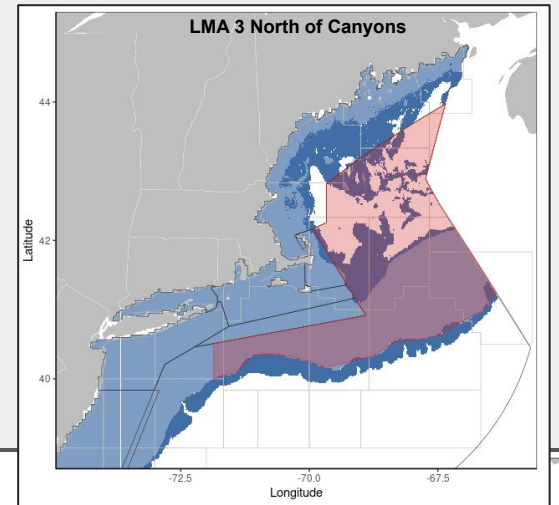
	Line Reduction / Weak Rope	Regional Risk Reduction	Regional Co-Occurrence
	NMFS	89%	
1	NMFS but replace closures (LMA1 RA Ext, NE LMA3, and SNE LMA3) with 70 trawl min	77%	71%
1a	NMFS but replace NE LMA3 closure with single endlines & 70 trawl min (80 trawl min)	84% (85%)	80% (81%)
2a	NMFS but replace NE LMA3 closure with GB Corridor closure	83%	78%
2a1	NMFS but replace NE LMA3 closure with GB Corridor closure (add April)	83%	78%
2b	NMFS but replace NE LMA3 closure with LMA3 North of Canyons closure	84%	79%
2b1	NMFS but replace NE LMA3 closure with LMA3 North of Canyons closure & 70 trawl min (year round in NE LMA 3 and SNE LMA3)	87%	84%
3a	NMFS but replace NE LMA3 closure with GB Corridor closure & 70 trawl min (year round in NE LMA 3) *with Georges Basin Ext & 50 line cap **with Georges Basin Ext & 40 line cap	86% *86% **86%	83%
4	NMFS but replace NE LMA3 closure with GB Corridor closure & 70 trawl min (year round in NE LMA 3) & replace SNE LMA3 closure time Jan 15 - Apr* (orig Dec-May) *Jan 15 to April aligns with closure in LMA 2	85%	81%
5	NMFS but replace NE LMA3 closure with GB Corridor closure with Georges Basin Ext & 70 trawl min (year round in NE LMA 3) & replace SNE LMA3 closure time Jan 15 - Apr* (orig Dec-May) *Jan 15 to April aligns with closure in LMA 2 **with 50 line cap ***with 40 line cap	85% **85% ***85%	81%



Trap/Pot: Lobster Management Area 3

Risk and co-occurrence reduction values for each individual measure are relative to LMA 3 Trap Pot ONLY

	Line Reduction / Weak Rope	Regional Risk Reduction	Regional Co-Occurrence
2b1	NMFS but replace NE LMA3 closure with LMA3 North of Canyons closure & 70 trawl min (year round in NE LMA 3 and SNE LMA3)	87%	84%
	2b1 plus 40 Line Cap	87%	84%
	2b1 plus 40 Line Cap & Remove 70 trap trawl min (year round in NE LMA3 and SNE LMA3)	84%	79%



Trap/Pot: LMA 3

Package 2 put together by NMFS at the request of the regional caucus for an Agency assembled analysis that reaches risk reduction target. The LMA 3 rolling closures were reduced spatially, and line cap was decreased to 45.

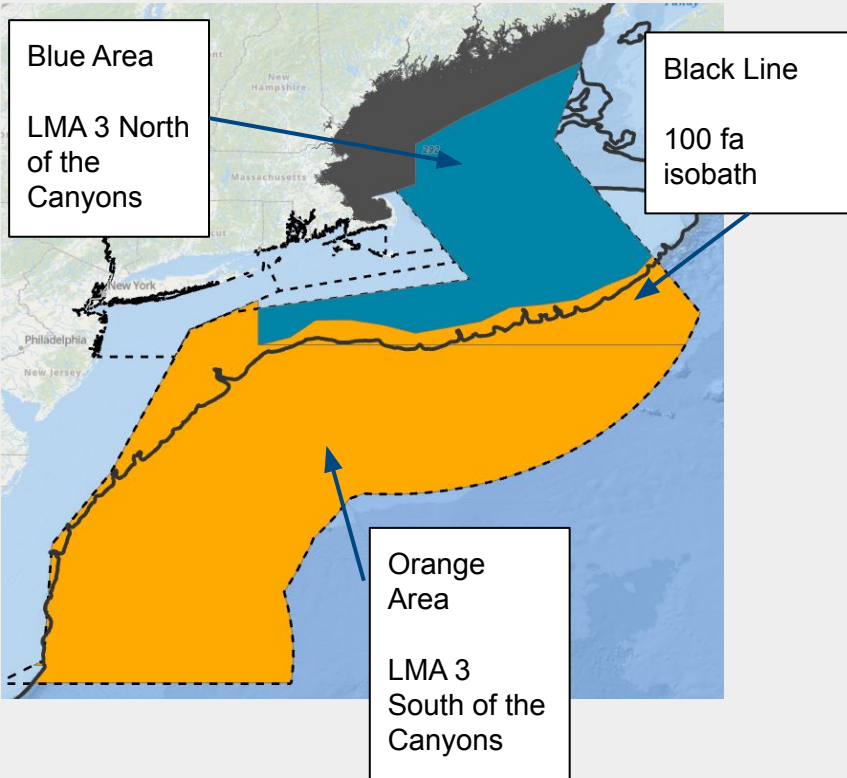
- All percent values are relative to LMA 3 Trap Pot Fisheries only
- **Approximately 9.7 remaining regional risk points**

Line Reduction	Closures	Weak Rope	Coastwide Risk Reduction Points	Regional Risk Reduction	Regional Co-Occurrence Reduction
<ul style="list-style-type: none"> - Line cap for LMA 3 lobster set at 45 - Requirement to fish with one endline in LMA 3 North of Canyons year round - Requirement to fish with one endline in LMA 3 South of Canyons thru Mid-Atlantic: <ul style="list-style-type: none"> - In depths less than 100 fa: Fishing with one endline year round - In depths greater than 100 fa: Fishing with one endline (May-Sept) 	<ul style="list-style-type: none"> - LMA 1 Restricted Area to Cashes Ledge (Oct -Feb) - South Island Restricted Area (Jan-Apr) - GOM LMA 3 closure (May-Jul) - SNE LMA 3 closure (Dec-May) 	<p>All rope is 33% weak with max 1700 lb breaking strength</p>	<p>7.7 (out of 9.7)</p>	<p>89%</p>	<p>86%</p>

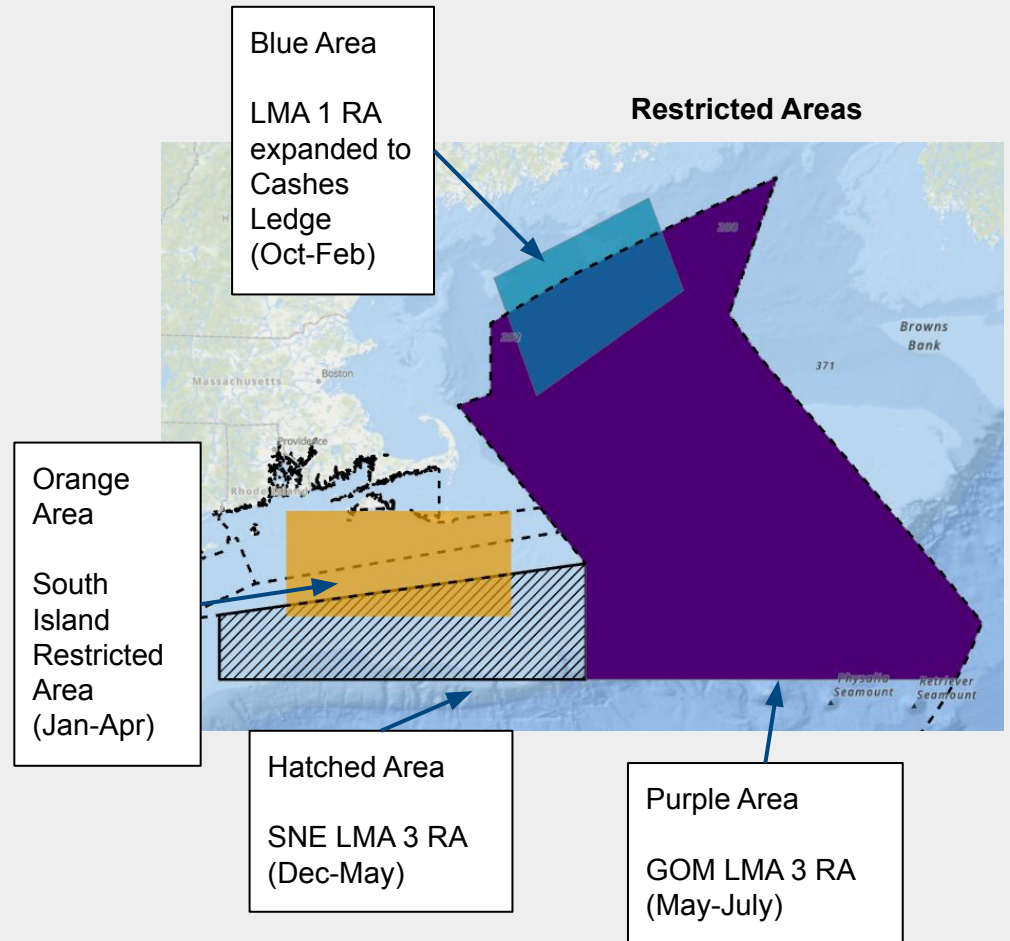
Trap/Pot: LMA 3 Package Maps

Package 2 put together by NMFS

Areas with restrictions for fishing with one endline



Restricted Areas



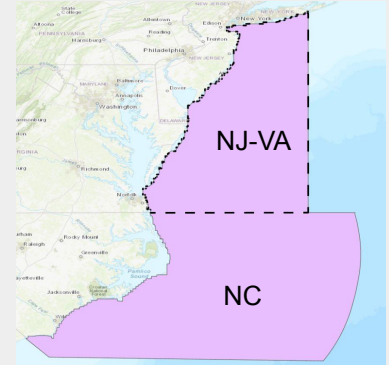
Gillnet: GOM and SNE

Closure	Weak Rope	Line Reduction	Coastwide Risk Reduction Points	Regional Risk Reduction	Regional Co-Occurrence Reduction
<p>Seasonal Closure West of 70° and North of 42.5° Apr-May</p> <p>Closure of Mass state waters Jan - May</p> <p>Closure of South Islands Restricted Area Feb 1 - Apr 30</p>	<p>GOM:</p> <ul style="list-style-type: none"> 75% WR <50 fa 50% WR outside 50 fa <p>SNE: 100% weak (full weak in top, links in bottom)</p>	<p>Endline cap of 12</p>	<p>2 (of 2.7)</p>	<p>73%</p>	<p>44%</p>



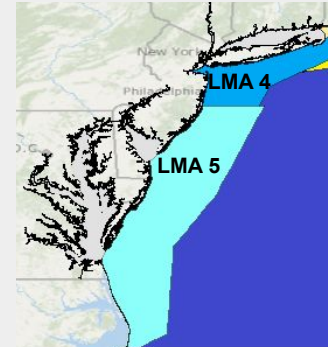
Gillnet: Mid-Atlantic

Package Details	Area measure applies to	Coastwide Risk Reduction Points	Regional Risk Reduction	Regional Co-Occurrence Reduction	Regional Line Reduction
<ul style="list-style-type: none"> - One Endline (Dogfish & InshoreSpp) <ul style="list-style-type: none"> - Smooth Dogfish, Spiny Dogfish, Blue Fish - 1100 lb Horizontal Rope All Gillnet - Weak Vertical Rope 1700lb All Gillnet - Weak Vertical Rope 1700lb (one endline) - 1100lb 100% Weak Vertical Rope (tag line) <ul style="list-style-type: none"> - TBD on how weak the tagline is, 1100 was selected at this time since it's the weak insert strength 	<ul style="list-style-type: none"> NJ-VA (year-round) NJ-VA, NC NJ-VA NC (Nov-April) NC, 0-3 nmi (Nov-April) 	0.59 (out of 1)	60.4%	3.5%	9.1%



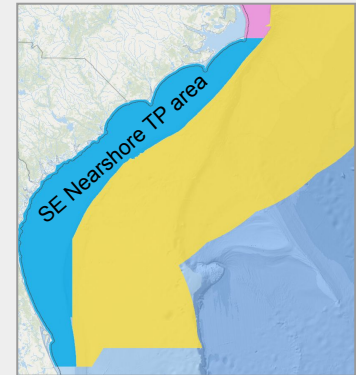
Trap/Pot: LMA 4 & LMA 5 (Mid-Atlantic)

Package Details	Area measure applies to	Coastwide Risk Reduction Points	Regional Risk Reduction	Regional Co-Occurrence Reduction	Regional Line Reduction
<ul style="list-style-type: none"> - Min 20 traps/trawl, Lobster and Conch/Whelk - Min 20 traps/trawl, BSB <i>[i.e. habitat pots that are left soaking]</i> - Min 1 trap/trawl, BSB, Nov-April and pots would come back at end of trip <i>[i.e. when fishery is being prosecuted as a tended strike fishery]</i> - Max 1 trap/trawl (singles) - One end line, all OTP fisheries, Nov/April - Weak rope 1700 lbs (100%) - LMA 3/5 overlap 	<p>LMA 4/5</p> <p>NY, NJ, DE, MD, VA</p> <p>NC</p> <p>NC, 0-3 nm</p> <p>LMA 4/5, Nov-April</p> <p>LMA 4/5</p> <p>Explore with ASMFC how they can fish the LMA 3 measures</p>	0.74 (out of 1.3)	58.1%	23.6%	24.6%



Southeast

Package Details	Coastwide Risk Reduction Points	Regional Risk Reduction
<ul style="list-style-type: none"> - For SE BSB fishery: move current SAFMC closures (time/space) into the plan and open to ropeless fishing - Expand SERA North to all of (new) SE Nearshore Trap/Pot area* <ul style="list-style-type: none"> - Singles only* - Current Max Line breaking strength (2200lbs and 1500 for FL state waters)* - Buoy line must be made of sinking line (current lines are neutrally buoyant, not sinking line) - In federal waters, Trap/pots deployed in the EEZ must be brought back at the conclusion of a fishing trip - Buoy line must be free objects (e.g. weights, floats) except where it attaches to the buoy and trap pot - 200 Trap Cap for Blue Crab* 	0^ (out of 0.3)	0%
<p>Measures implemented by states</p> <ul style="list-style-type: none"> - GA - Modify the boundary for state waters (i.e. gear restriction to shallow waters (0-1.5/18fa line)) depending on final weak rope requirements. - SC - Currently reviewing regulations for a blue crab suite of changes which are in line with measures discussed as risk reduction or precautionary. - FL - Non-transferability (in ocean waters) - [demonstrated landing in NE FL in winter] and/or endorsement for oceanside trap fishing <ul style="list-style-type: none"> - Industry would like transferability to include next of kin transferability similar to the dead bait shrimp fishery in Duval/Nassau county. - Industry would prefer non-transferability AND endorsement 		
<p>Non-regulatory recommendations:</p> <ul style="list-style-type: none"> - Federal trip reporting: Federal trips (GN and BSB) are reported to NMFS stat area (which are large areas). There is no finer scale so unable to assess true overlap with right whales. - Monitoring and Compliance: SE Gillnet Compliance report on exemptions and increased NMFS enforcement or monitoring in SERA S during the restricted period (Dec 1-Mar 31). Need to revisit gillnet measures if risk has increased or compliance is low. - Assess SE reg effectiveness and need in ~5 yrs 		



*Measures applicable for testing in DST

^Many SE measures are precautionary or could not be modeled given data resolution limitations

Emerging Lower Bound Package with LMA 3 Discussion Example

Package	Regional Line Reduction	Regional Co-Occurrence Reduction	Regional Risk Reduction
LMA1 Lobster (TrapPot)	34.0%	80.0%	89.8%
LMA 2 Trap/Pot	44.0%	71.1%	86.0%
LMA 3 Trap Pot Exploratory Pkg	53.3 %	63.8%	71.3%
OCC Trap/Pot	3.9%	29.9%	52.9%
LMA 4 & 5 Trap/pot	24.6%	24.2%	58.1%
GOM/SNE Gillnet	1.2 %	44.2%	73.3%
Mid-Atlantic Gillnet	9.1%	3.5%	60.3%
Southeast	0.0%	0.0%	0.0%
Totals		75.1%	84.7%

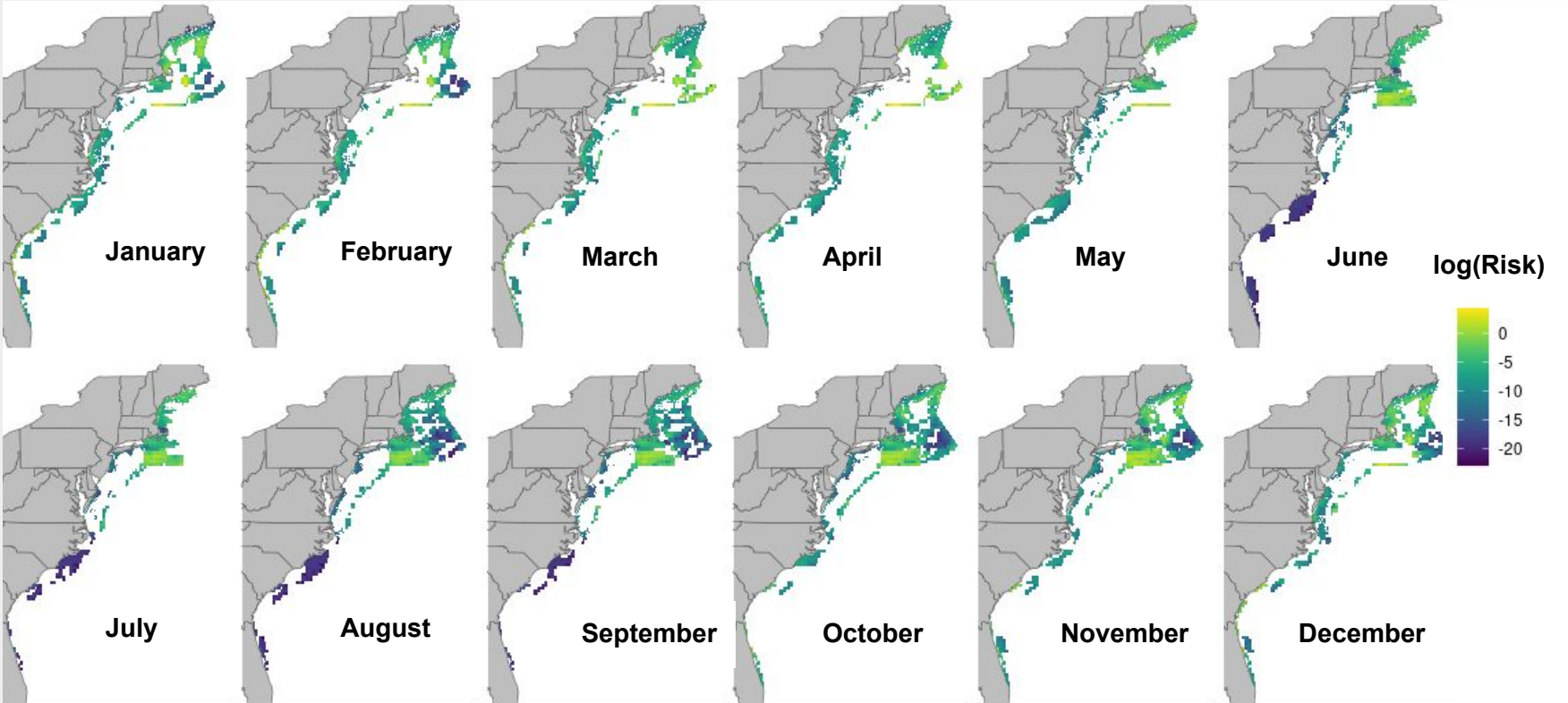
Emerging Upper Bound Package with NMFS LMA 3 With Additional Mods

Package	Regional Line Reduction	Regional Co-Occurrence Reduction	Regional Risk Reduction
LMA1 Lobster (Trap/Pot)	34.0%	80.0%	89.8%
LMA 2 Trap/Pot	44.0%	71.1%	86.0%
LMA 3 Trap Pot NMFS additions	51.9%	85.7%	88.6%
OCC Trap/Pot	3.9%	29.9%	52.9%
LMA 4 & 5 Trap/pot	24.6%	24.2%	58.1%
GOM/SNE Gillnet	1.2 %	44.2%	73.3%
Mid-Atlantic Gillnet	9.1%	3.5%	60.3%
Southeast	0.0%	0.0%	0.0%
Totals		76.7%	87.6%

Emerging Upper Bound Package with NMFS LMA 3 with Additional Mods and Shoulder Gear Reductions Around Lobster Lines-Out Closures

Package	Regional Line Reduction	Regional Co-Occurrence Reduction	Regional Risk Reduction
LMA1 Lobster (TrapPot)- includes shoulders	34.7%	80.7%	90.2%
LMA 2 Trap/Pot- includes shoulders	45.3%	73.1%	86.9%
LMA 3 Trap Pot NMFS additions	51.9%	85.7%	88.6%
OCC Trap/Pot- includes shoulders	4.0%	32.6%	54.9%
LMA 4 & 5 Trap/pot	24.6%	24.2%	58.1%
GOM/SNE Gillnet	1.2 %	44.2%	73.3%
Mid-Atlantic Gillnet	9.1%	3.5%	60.3%
Southeast	0%	0.0%	0.0%
	Totals	77.4%	88%

Emerging Upper Bound Package - NMFS LMA 3 with Additional Mods with Shoulder Gear Reductions Around Lobster Lines-Out Closures



Team's key considerations to frame risk reduction recommendations

Review key considerations we've heard from the Team to accompany its package recommendations

- Refer to draft document circulated to Team
- Any headline concerns or something missing?



NOAA
FISHERIES

Focused Conversation

- MRA
- On-demand gear

Assessing the Value of the MRA Towards Phase 1 Risk Reduction

- In 2019 the team voted to include the MRA in risk reduction measures, which NMFS provided in the FEIS, along with the risk reduction without it
- The Issue: mortality and serious injury (M/SI) used to calculate our risk reduction needed to get below PBR represents post-MRA years (2016-2020)
- We have had several requests to reconsider the value of the MRA, which was implemented in 2015 within the 2021 rule
- We used 2014 fishing effort provided by Mass DMF to estimate the total fishing pressure inside the MRA during 2014 and added this to existing fishery input to the DST.
- Data produced by MA DMF suggest a 20% increase in the percent of the whale population protected within Cape Cod Bay.
- We are providing two estimates of the value of the MRA for the team to discuss: One for full value of the MRA and a second for the 20% increase in value.

Estimating added value of Mass Restricted Area

- Assessing the value of the MRA involves recognizing that, prior to 2015, there was a significant source of risk that was removed through a management action with the intention of removing risk
- We can model this by adding this historical risk to both the numerator and denominator of the risk calculation.
- For simplicity, we'll use round numbers here.
- The entire east coast at our 2017 baseline had around ~100,000 risk units.
- 2014 Data supplied by Mass DMF suggests that the MRA removed ~15,000 risk units before the 2017 baseline.
 - So risk in 2015 would have been approximately 115,000 risk units.

Estimating added value of Mass Restricted Area

- So in 2017, the MRA was worth:

$$15,000 / (100,000 + 15,000) = 13\% \text{ of the total East Coast Risk}$$

- Phase 1 removed 45,000 risk units (45,000 / 100,000 = 45%, round numbers)
- If we include the full MRA value in this calculation:

$$(45,000 + 15,000) / (100,000 + 15,000) = 52\%$$

- A marginal value of 7%
- Recall that we previously reported a 8% marginal value with precise numbers.
- We now have packages hitting near 90% so accounting for the MRA:

$$(90,000 + 15,000) / (100,000 + 15,000) = 91.3\%$$

- A value of 1.3% risk reduction for the full value of the MRA
- The alternative 20% increased value of the MRA instead of full credit then represents a 0.26 % risk reduction value or would take a 90% package to 90.26%.



NOAA
FISHERIES

Conversation about MRA value before moving to On-Demand gear.

Ropeless implications of emerging measures

1. One endline trawls in areas of low gear density would require changes to buoy regulations that provide a pathway to ropeless without the need for an exempted fishing permit:
 - a. Acceleration of GPS gear marking technology to meet regulatory timeline. Recent progress discussed [here](#).
 - b. Requires acceleration of collaboration with adjacent mobile gear fisheries
 - i. Working with NEFMC to recruit mobile vessels from groundfish, squid, and scallop sectors. Anticipate spring NEFMC presentation to report on progress early in 2023.
 - ii. In discussions with Coonamessett Farm Foundation on aggregating background information for an SNE workshop with fixed and mobile gear fishermen to discuss gear separation schemes.
 - c. Requires work with the Councils and Commission to allow alternative gear location marking options
 - i. ACA lobster regs language requires a radar reflector and flag on westernmost end and radar reflector on easternmost end. Also has a 1.5 mile limit to a trawl (except LMA 3, 1.75)
 - ii. MSA Groundfish regs (gillnet) language: bottom-tending fixed gear must be marked so that the westernmost end has a radar reflector and pennant and easternmost has a radar reflector. Cannot exceed 1.25 mi between buoys
 - iii. Investigate engagement with the councils to reprise gear conflict advisory cttee (50 CFR 648.55(g)).
 - d. Requires work with SAFMC to modify SE Black Sea Bass closure to be a closure to buoy lines (allow ropeless fishing and mirror in Take Reduction Plan Regs). Existing SAFMC BSB regs do not require buoys

Emerging ropeless (continued)

2. Expansion of seasonal closures to vertical buoy lines demonstrate the need to develop ropeless fishing options to maintain fishing

3. Emerging suggestions from Team members to include a sunset provision: In areas where 100 percent weak rope cannot be implemented (and where gear is not densely fished) such as outside of 100 fathoms, create a sunset clause after which areas will be closed to persistent buoy lines

Ongoing ropeless research progress: Gear team continues to work with lobster fishermen, expanding to gillnet fishermen in the NE, SE efforts ongoing as well. A summary of NE efforts can be found [here](#), includes: Between Jan 1 and April 30, there have been 500 trials of on-demand systems i.e., winter trials.

- To date, there have been over 2100 total trials in all water depths in the pot/trap fishery.
- Since the start, using different system (i.e., spool, stowed rope, lift bag) there have been 64 sets of on-demand gear in water depths greater than 100 fathoms.
- Our success rate in all water depths is around 91%. Success is defined as the ability of the fisherman to acoustically release the system and retrieve the gear. Many of the failures were due to operational problems, e.g., human error.
- Presently 30 pot/trap fishermen are trialing gear from the gear library with a request for an additional 20 fishermen. There have been a total of 35 vessels contracted since the start of the program.





NOAA
FISHERIES

Build Consensus on Coastwide Recommendations

Testing support for recommendations



We will use a poll to gauge Team support. In the poll, we will ask for:

- Caucus
- Name
- Can you support this package?
 - Support recommendation
 - Support with reservations
 - Abstain (neutral OR unable to support but don't want to block consensus)
 - Can not support; strongly oppose
- Comments (open text field)

Following poll, we will assess results and discuss.

We may poll again if there are final changes to test.

Break!

Meeting will resume at 05:05 PM



Mentimeter Instructions



Primary Team members or Primaries serving as Alternates only, please:

- 1. Go to Menti.com**
- 2. Enter code shared via email**
- 3. Enter your response and hit submit to move through the poll**

Responses will be aggregated and presented by caucus

Public Comment



Public comments welcome

- Share thoughts in chat or verbally
- To comment verbally, raise virtual “hand” or signal interest in chat
- Limit comments to 2 minutes; may need to adjust if many speakers
- Please keep all comments...
 - *on-point*
 - *respectful*
 - *focused on issues (not individuals)*
- Facilitators will intervene if ground rules are not honored; public member will be asked to leave the meeting



CBI

CATALYZING COLLABORATION