



2021 Atlantic Large Whale Take Reduction Plan



New Hampshire Guide to Regulations for Northeast Lobster and Jonah Crab Trap/Pot Fisheries



The Atlantic Large Whale Take Reduction Plan for lobster and Jonah crab trap/pot fisheries was amended in 2021. If your principal port is in New Hampshire, the following requirements apply to you.

REMINDER: GENERAL TRAP/POT REQUIREMENTS

- No buoy line floating at the surface.
- No wet storage of gear (all gear must be hauled out of the water at least once every 30 days).
- All groundlines must be made of sinking line.
- These are currently required. No changes have been made.

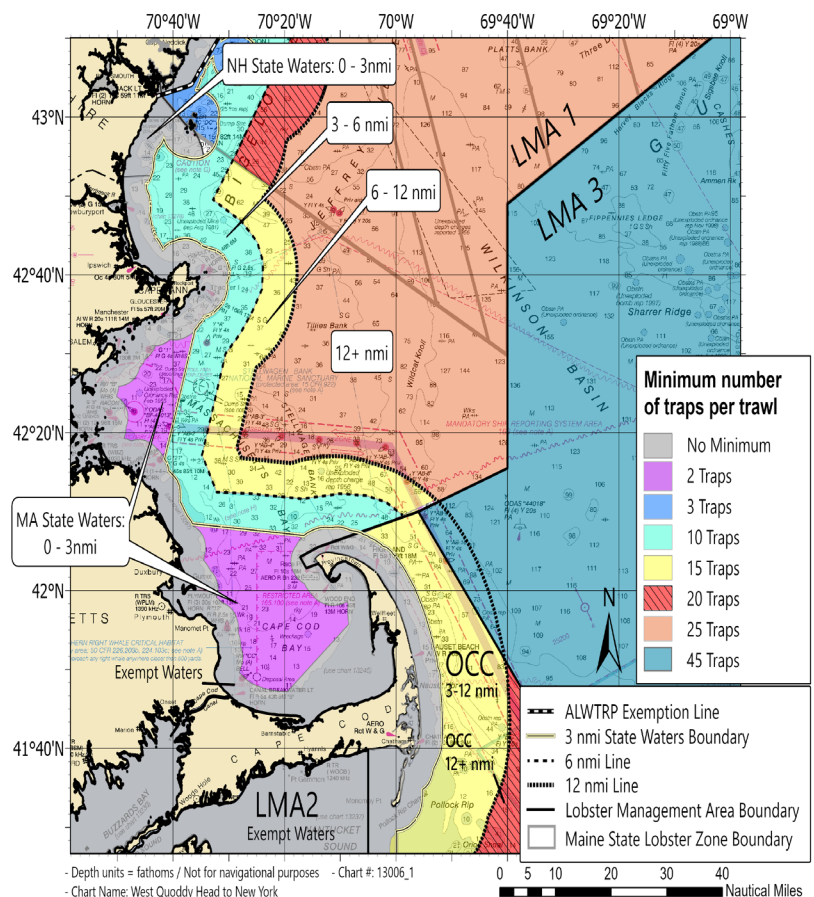
To see these regulations and updates on our website, please scan the QR code with your phone's camera >>



MINIMUM TRAPS PER TRAWL IN LOBSTER MANAGEMENT AREAS EFFECTIVE MAY 1, 2022

LOBSTER MANAGEMENT AREAS (LMA)	MINIMUM TRAPS/ TRAWL
NH State Waters	
0-3 nm	No minimum
LMA 1	
3-6* nm	10 (no change)
6*-12 nm	15
Beyond 12 nm	25
LMA 3	
North of 50 fathom line on the south end of Georges Bank	45, increase maximum trawl length to 1.75 nm
South of 50 fathom line on the south end of Georges Bank	35, increase maximum trawl length to 1.75 nm
Georges Basin Restricted Area	50, increase maximum trawl length to 1.75 nm

*Note that the 6 nm line refers to an approximation, described in 50 CFR 229.32 (a)(2)(ii).



Questions?

NEW HAMPSHIRE: Renee Zobel: (603) 868-1095, renee.zobel@wildlife.nh.gov

GREATER ATLANTIC REGIONAL FISHERIES OFFICE:

Jennifer Goebel, Take Reduction Team Coordinator: (978) 281-9175, nmfs.gar.alwtrt@noaa.gov

Rob Martin, Northeast Gear Specialist: (617) 710-6322, robert.martin@noaa.gov

WWW.FISHERIES.NOAA.GOV/ALWTRP

NORTHEAST LOBSTER/JONAH CRAB GEAR MARKING

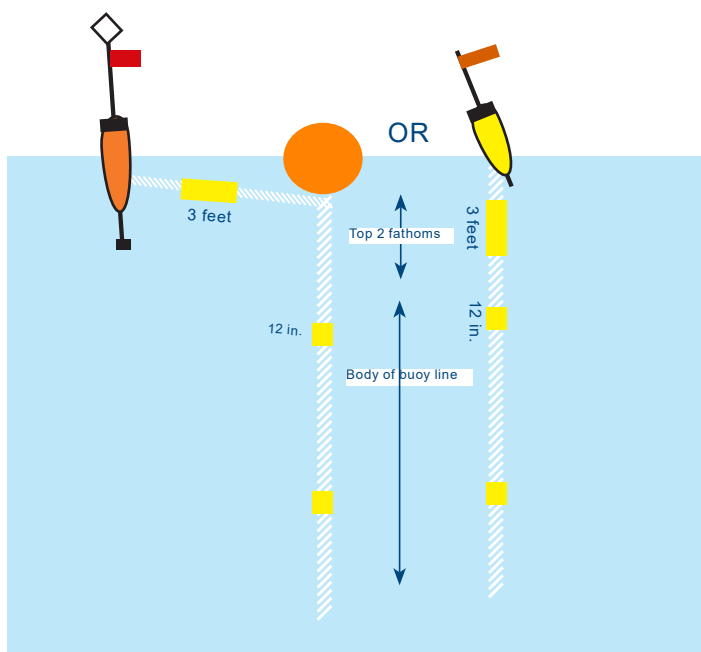
These are the new gear marking requirements for Northeast lobster and Jonah crab trap/pot gear. Requirements for all other management areas and other fisheries remain the same. These requirements represent the minimum markings. Additional markings are also allowed. Visit fisheries.noaa.gov/ALWTRP and New Hampshire Fish and Game Department for updates and complete regulations.

State Waters

A TOTAL OF 3 MARKS REQUIRED:

One 3-foot **YELLOW** mark within 2 fathoms of the surface buoy or within 2 fathoms of the highfliers and buoys at the surface (**SOLID YELLOW** by May 1, 2022); and

One 12-inch **YELLOW** mark in top 50% of buoy line; and
One 12-inch **YELLOW** mark in bottom 50% of buoy line.

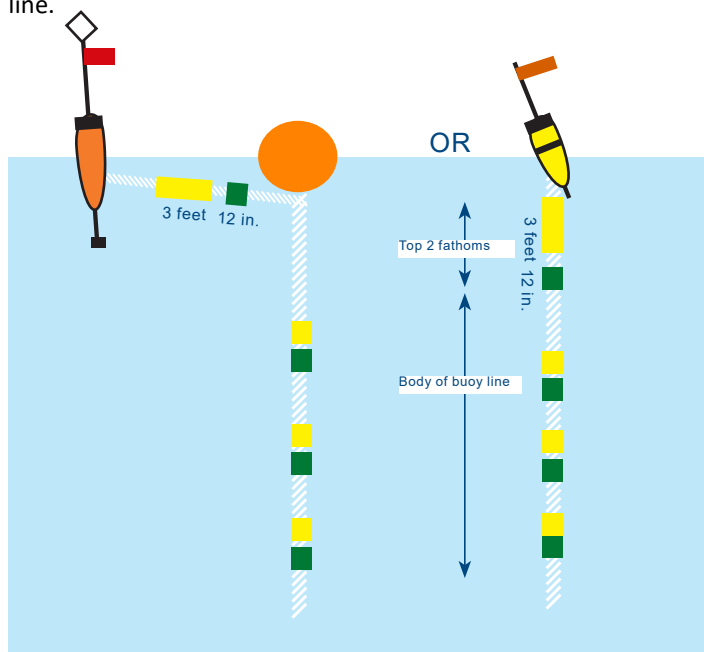


Federal Waters (May 1, 2022)

A TOTAL OF 4 SETS OF MARKS REQUIRED:

One 3-foot **SOLID YELLOW** mark within 6 inches of a 12-inch **GREEN** mark in the top 2 fathoms of the surface buoy or within 2 fathoms of the highfliers and buoys at the surface

One 12-inch **YELLOW** mark within 6 inches of a 12-inch **GREEN** mark in the top, middle, and bottom of the body of the buoy line.



WAYS TO MARK YOUR GEAR

A solid YELLOW rope may be used for state-specific gear marks, including the solid surface mark.

The solid 3-foot mark may be applied with dye, paint, tape, heat-shrink tubing, insertion of a colored rope or braided sleeve, or the line may be marked as approved in writing by the Greater Atlantic Regional Administrator.

Rope with a distinctive YELLOW colored strand throughout or YELLOW and WHITE Candy Cane rope may be used instead of the state specific gear marks in the body of the buoy line.

For 12-inch federal marks or where state-specific colored rope is not used, the 12 -inch marks may be added using dye, paint, tape, heat-shrink tubing, zip ties; spliced in insertion of a colored rope or braided sleeve or other material, or a thin line may be woven into or through the line; or the line may be marked as approved in writing by the Greater Atlantic Regional Administrator.

SURFACE SYSTEM MARKING

A surface system is the collection of buoys, radar reflectors, and high flyers that identify the presence of stationary bottom fishing gear. The following rules apply in state and federal waters:

When buoy marking is not already required by state or federal regulations, the letters and numbers to mark gear must be at least 1 inch (2.5 cm) in height, block letters or Arabic numbers, in a color that contrasts with the color of the buoy.

Trap/pot surface buoys must be marked to identify the vessel or fishery with one of the following:

- The owner's motorboat registration number and/or U.S. vessel documentation number; or
- The federal commercial fishing permit number; or
- Positive identification marking required by the vessel's home-port state.

NORTHEAST LOBSTER/JONAH CRAB WEAK INSERT REQUIREMENTS

EFFECTIVE MAY 1, 2022

GENERAL REQUIREMENTS

The same rules apply in state and federal waters.

Weak inserts and line must be chosen from the list of NMFS-approved gear. To see the most updated list of approved weak line and inserts, please visit the fisheries.noaa.gov/NE-approved-weak web page.

Weak inserts must be designed in such a way that the bitter end of the buoy line is clean and free of any knots when the weak insert breaks.

Weak rope can also be used on any buoy line down to the lowest point where a weak insert is required. Use of 100 percent weak rope is also allowed in place of inserts.

APPROVED WEAK ROPE

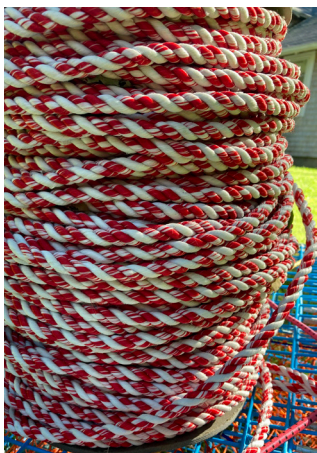
To be approved, the average breaking strength must be within 10 percent of 1,700 lbs.

Currently the fully formed weak ropes approved for use are:

- Rocky Mount (3/8"), Candy Cane (3/8"), and Candy Cane v01/22 (3/8") available in state colors including YELLOW, shown below in RED and RED/WHITE
- Neocorp 3/8" and 1/2"
- Seaway 5/16" #10 Braid
- Everson 3/8"

The approved three-strand ropes may be spliced into traditional buoy ropes to create inserts, or they can be used to replace standard rope as weak rope.

The approved braided ropes can be used as full weak rope (but not inserts) connected to your regular line using a knot at the depth required for your fishing area (the depth of your lowest required weak insertion or the proportion of your rope required to be weak).



Check fisheries.noaa.gov/NE-approved-weak for information about more weak rope and weak inserts as they are approved.

REQUIREMENTS BY LOCATION

NH STATE WATERS: 1 weak insert 50% down the buoy line or top half of buoy line 1,700 lb rope OR 100% weak line.

LMA 1 3-12 NM: Weak inserts at 25% and 50% down the line OR top 50% of buoy line weak rope OR 100% weak line.

LMA 1 BEYOND 12 NM: 1 weak insert 33% down the line OR 100% weak line.

APPROVED WEAK INSERTS

Weak Rope Inserts (not allowed for braided ropes)

All weak rope (1700-pound breaking strength) inserts must be at least 3 feet in length, must be connected on each end with a tuck or splice, and must be a contrasting color. Approved splices are below and on our website.



The red rope in these pictures is weak rope manufactured by Rocky Mount Cordage Company.

South Shore (Novabraid) Sleeve

Sleeves must be at least 3 feet long and of a contrasting color.



In-line Manufactured Links

All in-line manufactured weak links must be stamped with the breaking strength, must be a contrasting color, and must be connected to the regular-strength rope with a tuck or splice.



NORTHEAST LOBSTER/JONAH CRAB SEASONAL RESTRICTED AREAS

CHANGES TO CLOSURE AREAS

All new and existing closures are modified from restricting all trap/pot fishing to only restricting trap/pot fishing that uses persistent (traditional) buoy lines, except for federal waters in the Outer Cape Lobster Management Area (LMA), which remains closed consistent with the Atlantic States Marine Fisheries Commission American lobster Interstate Fishery Management Plan. Gear that does not use persistent buoy lines, such as “ropeless” gear that retrieves trap/pot trawls when the vessel is on-site, is now allowed. Fishermen must obtain authorization from the state (if in state waters) and Exempted Fishing Permits from NOAA to be exempt from other federal regulations requiring buoy lines before using ropeless gear.

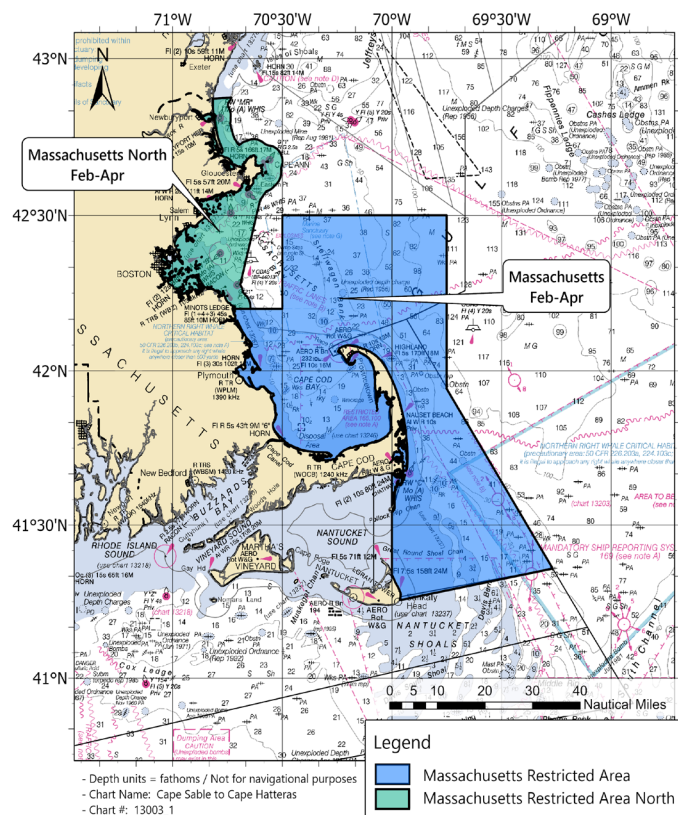
NEW RESTRICTED AREAS AFFECTING NH FISHERMEN

Massachusetts Restricted Area North:

This area expands the previous Massachusetts Restricted Area (MRA). The entire area is closed to buoy lines February 1-April 30.

Longitude	Latitude
-70° 48.98' W	42° 52.32' N
-70° 43.94' W	42° 52.58' N
-70° 38.69' W	42° 12.00' N
-70° 30.00' W	42° 12.00' N
-70° 30.00' W	42° 30.00' N
-69° 45.00' W	42° 30.00' N
-69° 45.00' W	41° 56.50' N
-69° 16.00' W	41° 21.50' N
-69° 57.90' W	41° 15.30' N
-70° 00.00' W	41° 20.30' N
-70° 00.00' W	41° 40.20' N

Massachusetts state regulations extend the MRA closure in state waters to May 15, with potential extension until May 31, if whales remain in the area. More information can be found at www.mass.gov/orgs/division-of-marine-fisheries.



LMA1 Restricted Area, Offshore Maine LMA1 Zones C/D/E:

Closed to buoy lines October 1-January 31.

Longitude	Latitude
-69° 36.77' W	43° 06.00' N
-68° 21.60' W	43° 44.00' N
-68° 17.27' W	43° 32.68' N
-69° 32.16' W	42° 53.52' N
-69° 36.77' W	43° 06.00' N

EXEMPTED FISHING PERMITS

Exempted Fishing Permits (EFPs) are issued for activities that support fisheries-related research. There are studies underway to develop fishing methods that do not use buoy lines to retrieve gear and alert other fishermen to the presence of gear on the bottom. Results of this work would enable the fishing industry to operate in areas where persistent buoy lines are prohibited. To participate in this research, federally permitted vessels must operate under EFPs, usually headed by a research, academic, state, or fishery organization that designs a research plan. If you are interested in testing ropeless gear or have another idea for research on fishing without persistent buoy lines, please contact us at (978) 281-9315 or nmfs.gar.researchpermit@noaa.gov.

