



**NOAA  
FISHERIES**

**OLE**

# Office of Law Enforcement HMS Updates



**Amy Anderson**

Special Agent

Office of Law Enforcement, HQ

May 15, 2024



**NOAA**  
**FISHERIES**

OLE

# OLE Priorities and Staffing

Sustainable Fisheries

Protected Resources

IUU Fishing

Seafood Fraud

Wildlife Trafficking

National Marine Sanctuaries and Monuments

<https://www.fisheries.noaa.gov/about/office-law-enforcement>



# OLE HMS Updates



**NOAA**  
**FISHERIES**

OLE

Common violations –

- HMS permitting
- Failure to report landings
- Failure to maintain proper landing form
- Retention in closed areas

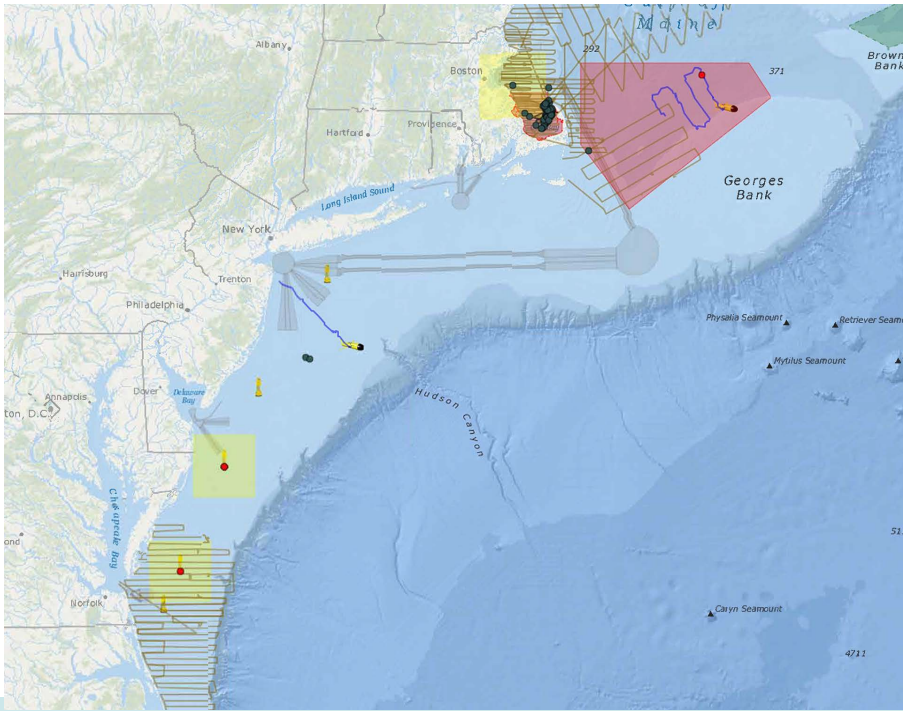
<https://www.noaa.gov/general-counsel/gc-enforcement-section/enforcement-charging-information>

# Right Whale Road to Recovery

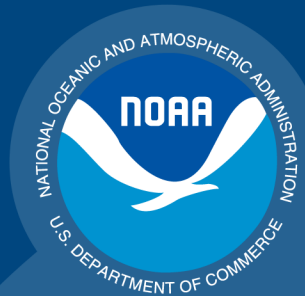


**NOAA**  
**FISHERIES**  
OLE

Seasonal Management Areas  
Right Whale Slow Zones  
Dynamic Management Areas



Online right whale sightings map -  
<https://whalemap.org/whalemap.html>



# Report a Violation

(800) 853-1964

**NOAA**  
**FISHERIES**  
OLE



<https://www.fisheries.noaa.gov/contact/office-law-enforcement>