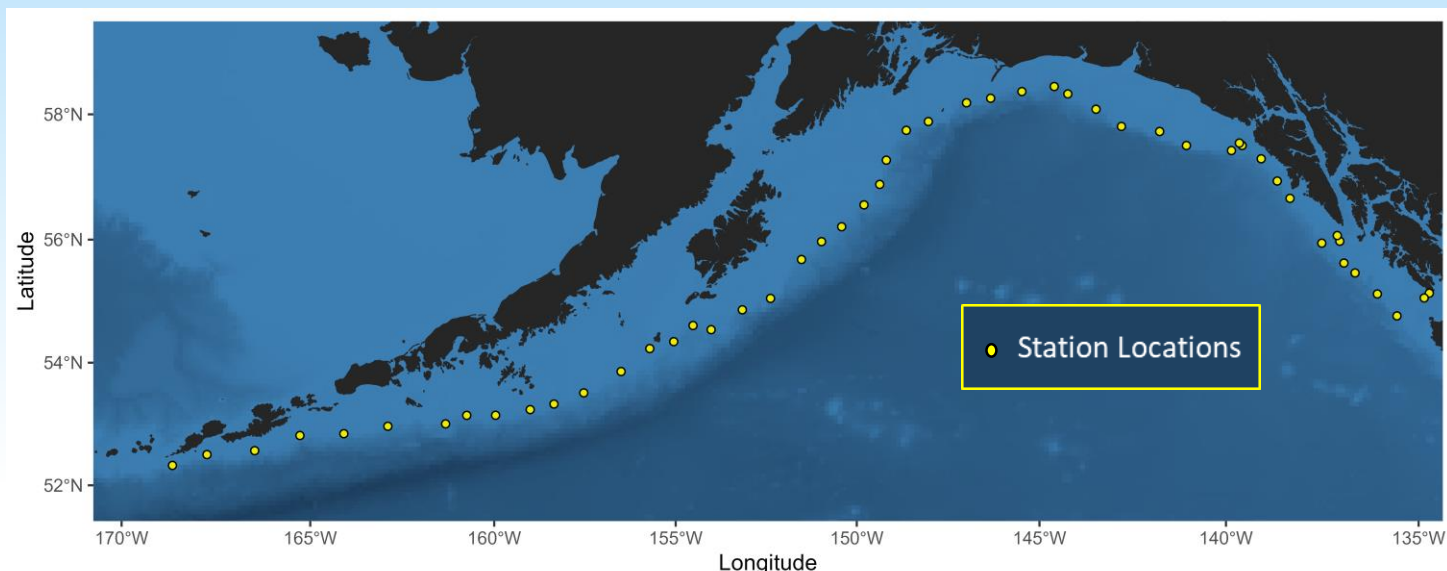




Alaska Fisheries Science Center Longline Survey

June 1 – July 22, 2025



Map showing 2025 AFSC Longline Survey station locations in the Gulf of Alaska. The survey samples groundfish populations in depths from 150-1000 m along the continental shelf and upper slope.

Who is conducting the research?

This project is supported by NOAA Fisheries through the Alaska Fisheries Science Center (AFSC) and the Cooperative Research Program. The Cooperative Research Program provides financial support and the AFSC provides scientists to oversee the collection and analyses of survey data and will contract with a to-be-determined industry vessel to execute this 50-day groundfish survey. The survey utilizes cost-recovery, whereby the catch is sold by the vessel contractor to offset operational expenses, including crew wages, fuel, and fixed vessel costs.

What is the research objective?

The overall research objective is to conduct a fisheries-independent survey of groundfish resources in Alaskan waters. The AFSC Longline Survey is specifically designed to provide a relative population index for assessing sablefish, or black cod, but its data is also useful for several other groundfish species. The survey occurs in fish habitats that are not well sampled by trawl surveys due to the deep depths and rough bottoms where the gear is deployed.

Where is the research being conducted?

The AFSC Longline Survey is conducted on a rotating basis throughout Alaska. The survey is scheduled to sample the Gulf of Alaska in 2025 and the eastern Bering Sea and the eastern Aleutian Islands in 2026.

Why is the data important? How will data be used?

The data collected by the survey is a primary index used in the Alaska sablefish stock assessment. The data is also used to assess other groundfish species, including Greenland turbot, Pacific cod, shortspine thornyhead, rockfish (including rougheye, blackspotted, and shortraker rockfish), sharks, and grenadiers. The stock assessments determine population estimates and trends and ultimately are used for producing harvest recommendations presented to the North Pacific Fishery Management Council (NPFMC) for setting annual fishery quotas.



Howard Lutnick
Secretary of Commerce

Vice Admiral Nancy Hann
Deputy Under Secretary for Operations
and performing the duties of Under
Secretary of Commerce for Oceans
and Atmosphere and NOAA
Administrator

Emily Menashes
Deputy Assistant Administrator for
Operations for NOAA Fisheries,
performing the duties of Acting
Assistant Secretary for Oceans and
Atmosphere and Acting

February 2025

www.fisheries.noaa.gov

Schedule for the 2025 AFSC Longline Survey

Leg 1 – Dutch Harbor to Yakutat	June 1 – June 18
Leg 2 – Yakutat to Yakutat	June 18 – July 5
Leg 3 – Yakutat to Dutch Harbor	July 5 – July 22
Survey data analysis	July 22 – August
Survey data available to assessment authors	September
Stock assessments presented to NPFMC	November
Survey data available online and via cruise report	December

How will this research benefit Alaska communities and stakeholders?

The AFSC Longline Survey supports responsible management of Alaska groundfish stocks. Alaska communities and stakeholders benefit from lucrative sustainable fisheries and continued access to high-quality seafood for subsistence and personal use. The survey occurs in offshore areas that do not overlap with subsistence hunting.

How do you plan to communicate research results?

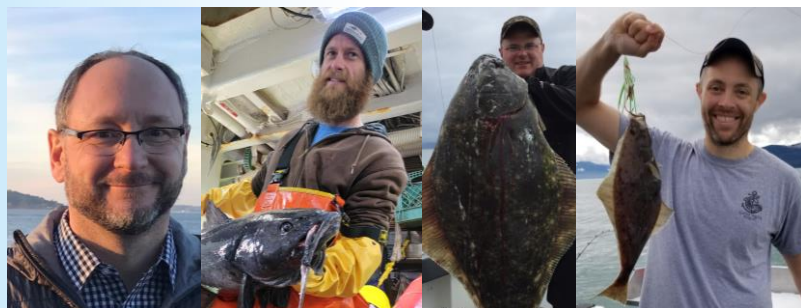
Data from the survey will be provided to stock assessment scientists in September and stock assessments will be presented to the NPFMC in November. Raw survey data will be made available to the general public online (see below) and via a cruise report that will be available as an AFSC Technical Memorandum in December.

Longline survey data:

<https://www.fisheries.noaa.gov/resource/map/alaska-longline-survey-data-map>

Longline survey cruise reports:

<https://www.fisheries.noaa.gov/alaska/science-data/alaska-sablefish-longline-survey-reports>



Contacts (from left):

Pat Malecha, Pat.Malecha@noaa.gov (ABL, Survey Coordinator)
Kevin Siwicke, Kevin.Siwicke@noaa.gov, (ABL, Survey Operations)
Chris Lunsford, Chris.Lunsford@noaa.gov, (ABL, MESA Program Manager)
Daniel Goethel, Daniel.Goethel@noaa.gov, (ABL, Sablefish Stock Assessment)