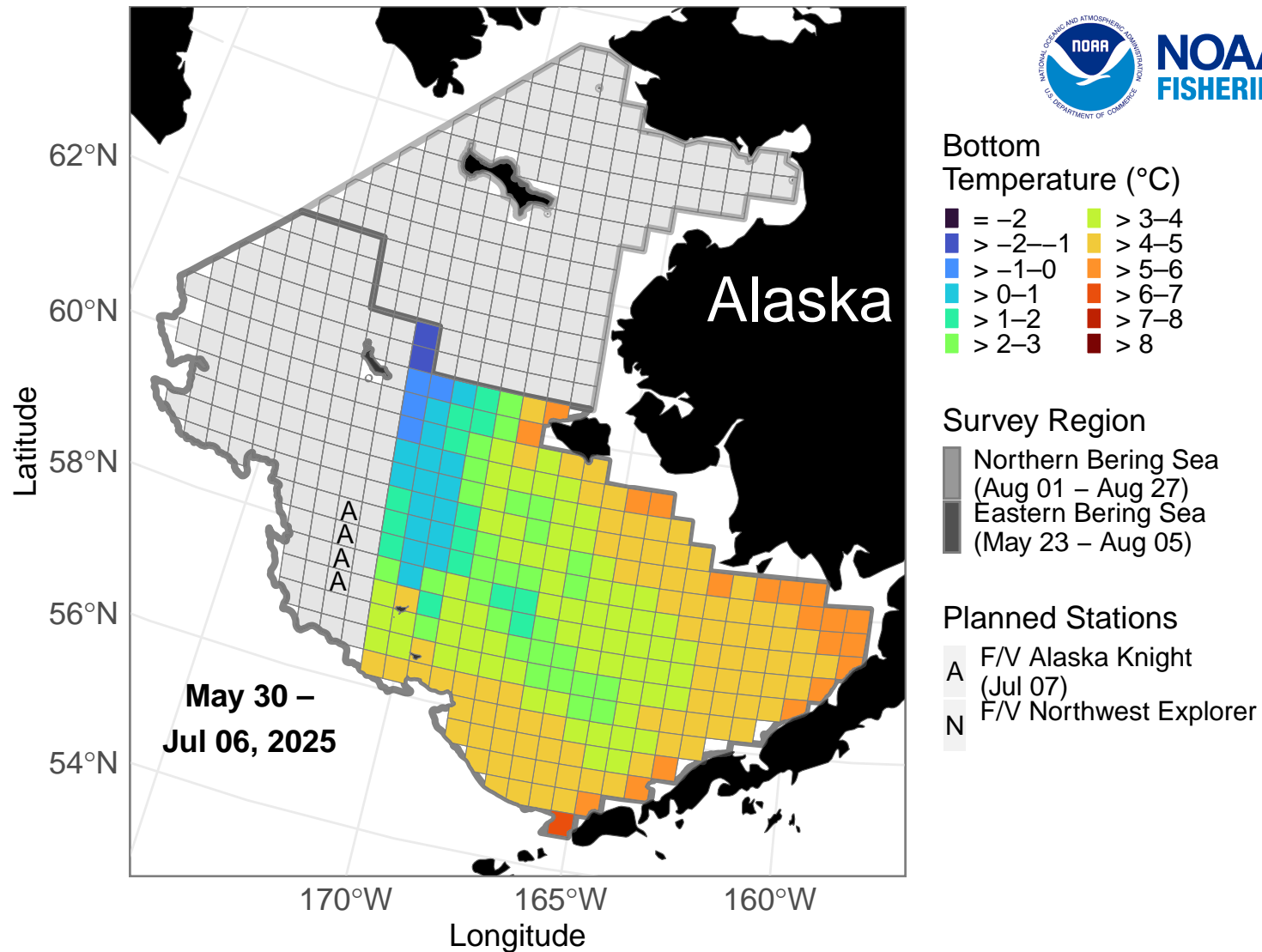


2025 Bottom Temperature (°C)

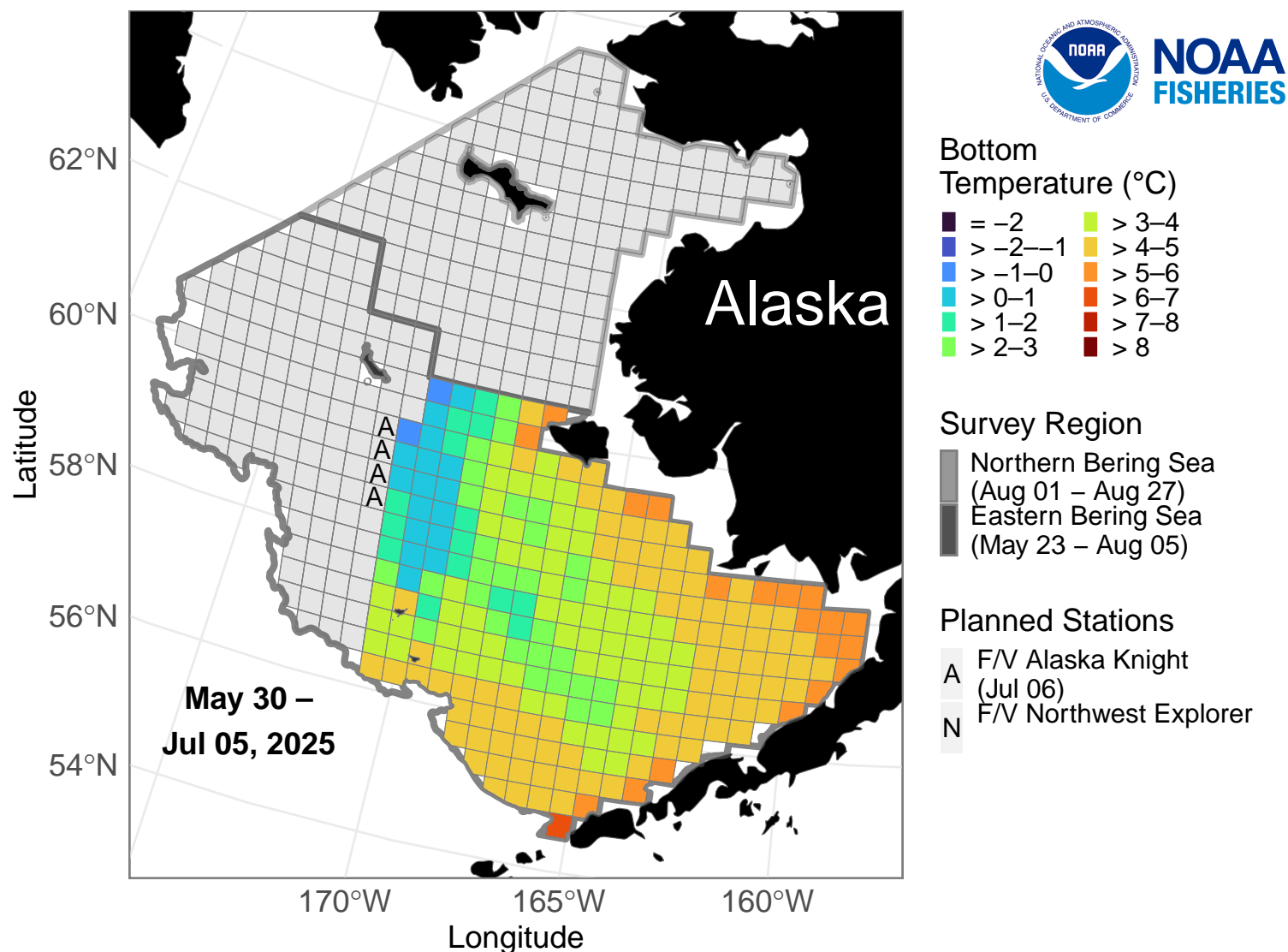
NOAA Fisheries Bering Sea Bottom Trawl Survey



NOAA Fisheries Alaska Fisheries Science Center Groundfish Assessment Program is conducting the eastern Bering Sea and northern Bering Sea bottom trawl surveys. The near real-time ocean bottom temperatures depicted were collected May 31-July 6. On July 6, one station was surveyed by the F/V *Alaska Knight* and four stations were surveyed by the F/V *Northwest Explorer*. There are 4 stations planned for July 7. Credit: NOAA Fisheries

2025 Bottom Temperature (°C)

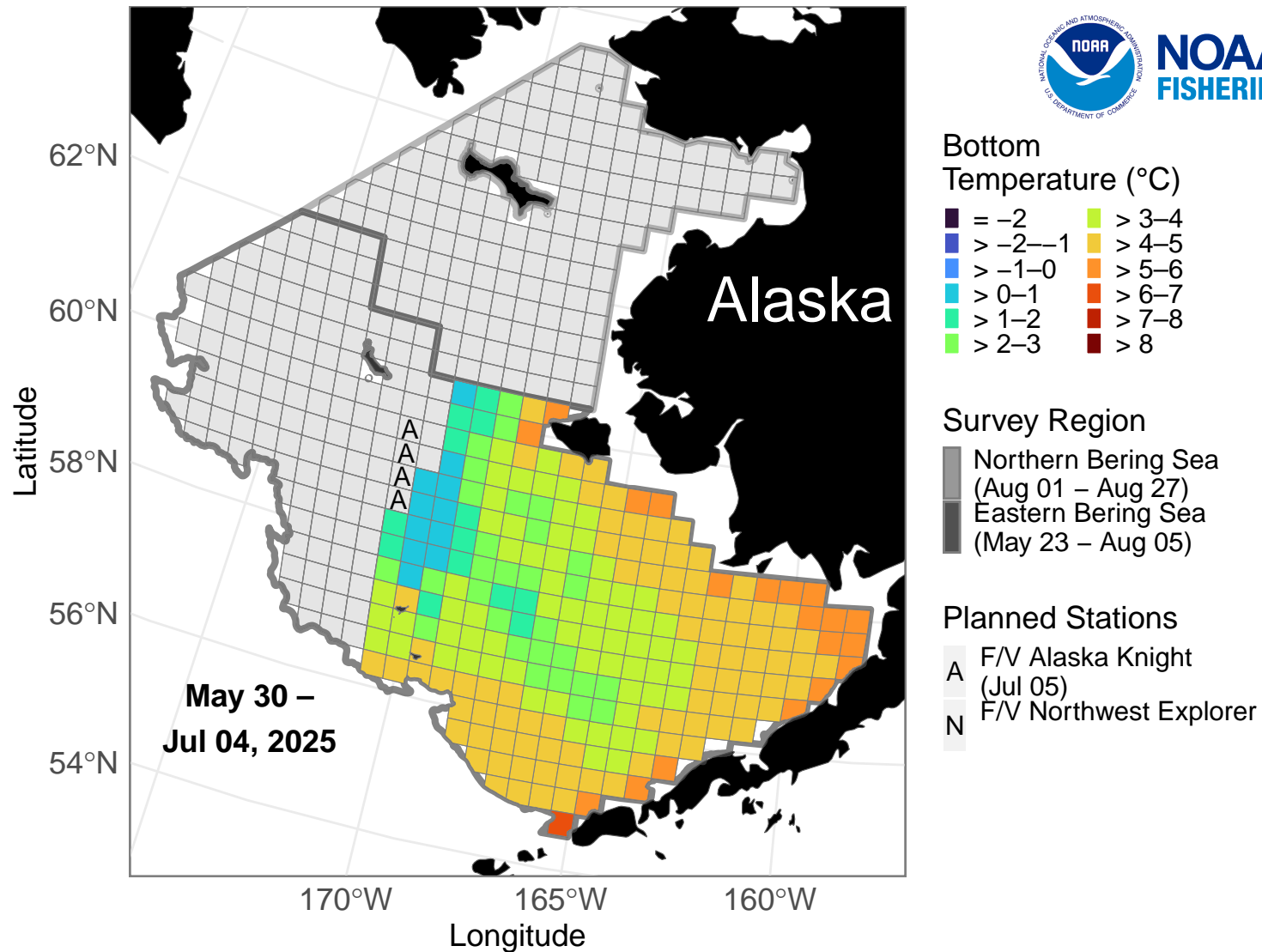
NOAA Fisheries Bering Sea Bottom Trawl Survey



NOAA Fisheries Alaska Fisheries Science Center Groundfish Assessment Program is conducting the eastern Bering Sea and northern Bering Sea bottom trawl surveys. The near real-time ocean bottom temperatures depicted were collected May 31-July 5. On July 5, four stations were surveyed by the F/V *Alaska Knight* and four stations were surveyed by the F/V *Northwest Explorer*. There are 4 stations planned for July 6. Credit: NOAA Fisheries

2025 Bottom Temperature (°C)

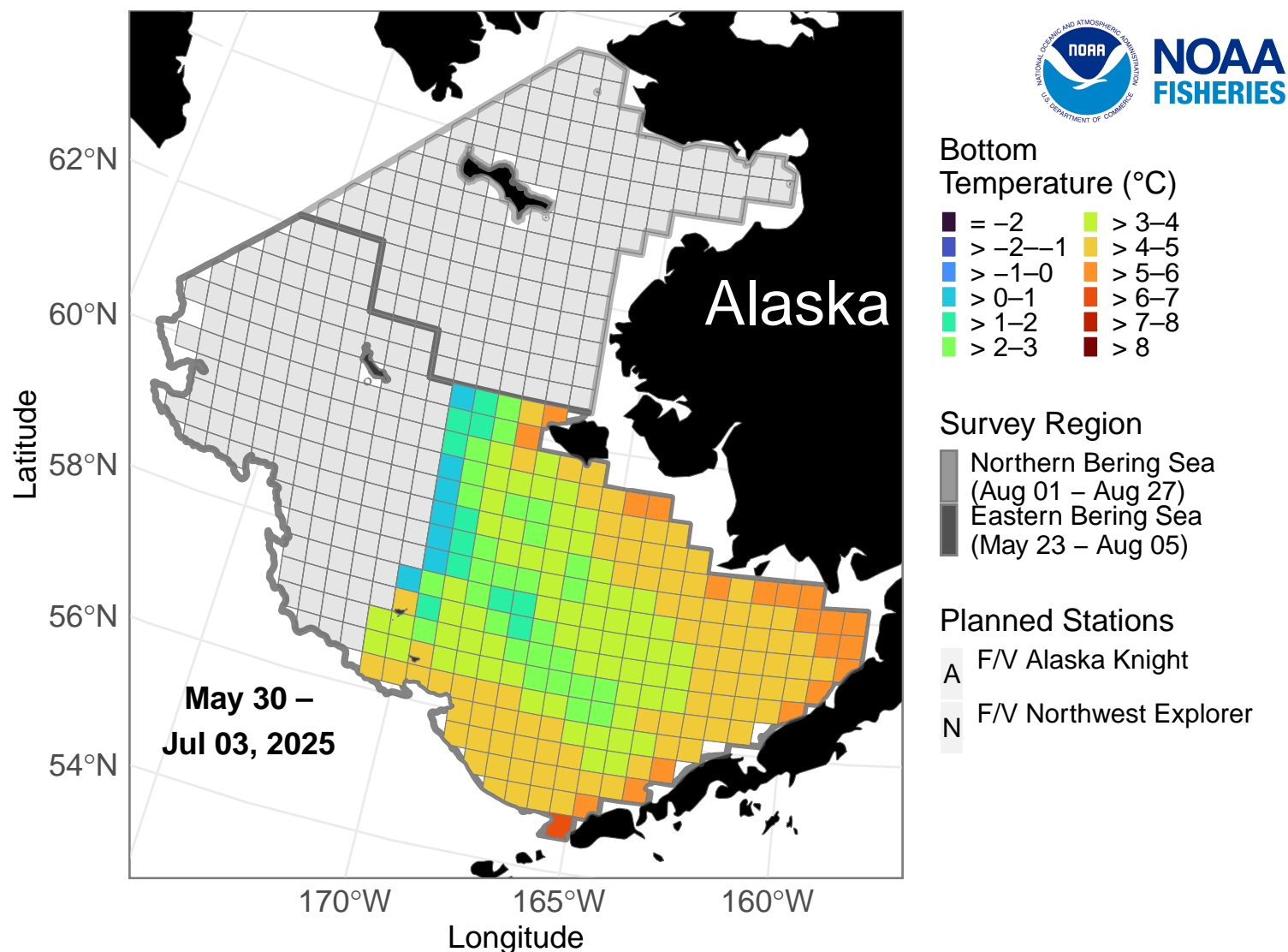
NOAA Fisheries Bering Sea Bottom Trawl Survey



NOAA Fisheries Alaska Fisheries Science Center Groundfish Assessment Program is conducting the eastern Bering Sea and northern Bering Sea bottom trawl surveys. The near real-time ocean bottom temperatures depicted were collected May 31-July 4. On July 4, four stations were surveyed by the F/V *Alaska Knight* and four stations were surveyed by the F/V *Northwest Explorer*. There are 4 stations planned for July 5. Credit: NOAA Fisheries

2025 Bottom Temperature (°C)

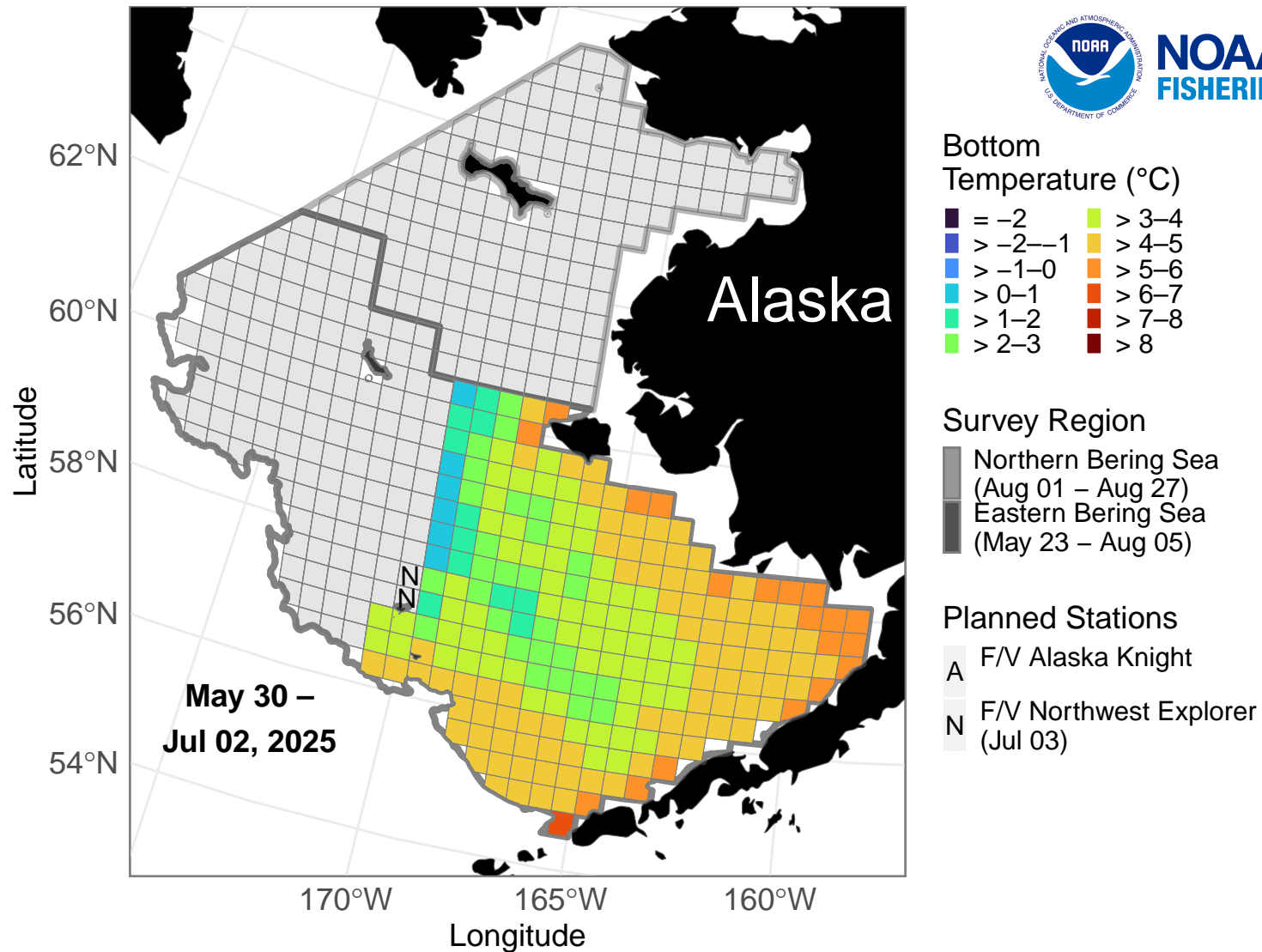
NOAA Fisheries Bering Sea Bottom Trawl Survey



NOAA Fisheries Alaska Fisheries Science Center Groundfish Assessment Program is conducting the eastern Bering Sea and northern Bering Sea bottom trawl surveys. The near real-time ocean bottom temperatures depicted were collected May 31-July 3. On July 3, two stations were surveyed by the F/V *Northwest Explorer*. No stations were surveyed by the F/V *Alaska Knight*. There are no stations planned for July 4. Credit: NOAA Fisheries

2025 Bottom Temperature (°C)

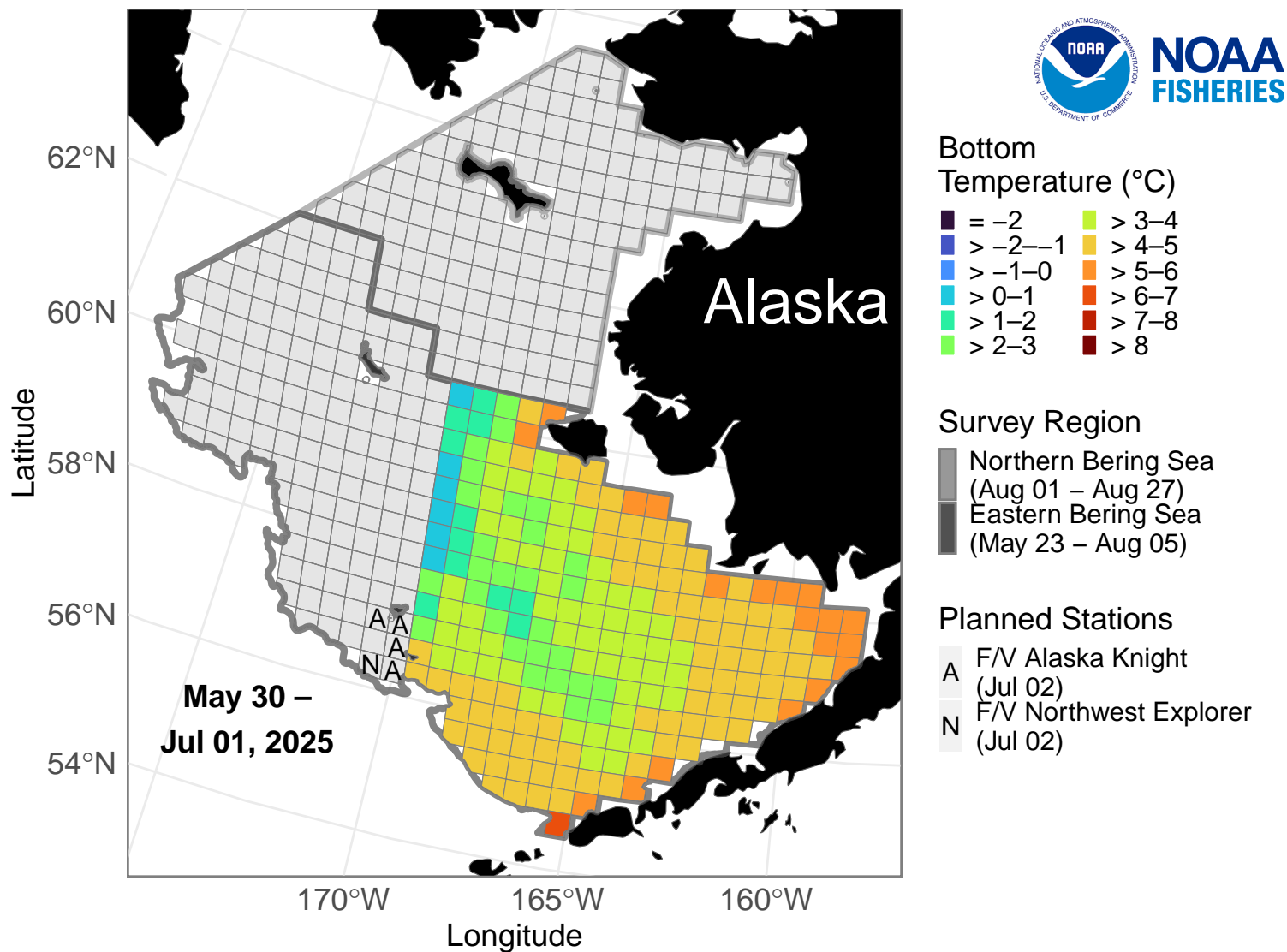
NOAA Fisheries Bering Sea Bottom Trawl Survey



NOAA Fisheries Alaska Fisheries Science Center Groundfish Assessment Program is conducting the eastern Bering Sea and northern Bering Sea bottom trawl surveys. The near real-time ocean bottom temperatures depicted were collected May 31-July 2. On July 2, five stations were surveyed by the F/V *Alaska Knight* and two stations were surveyed by the F/V *Northwest Explorer*. There are 2 stations planned for July 3. Credit: NOAA Fisheries

2025 Bottom Temperature (°C)

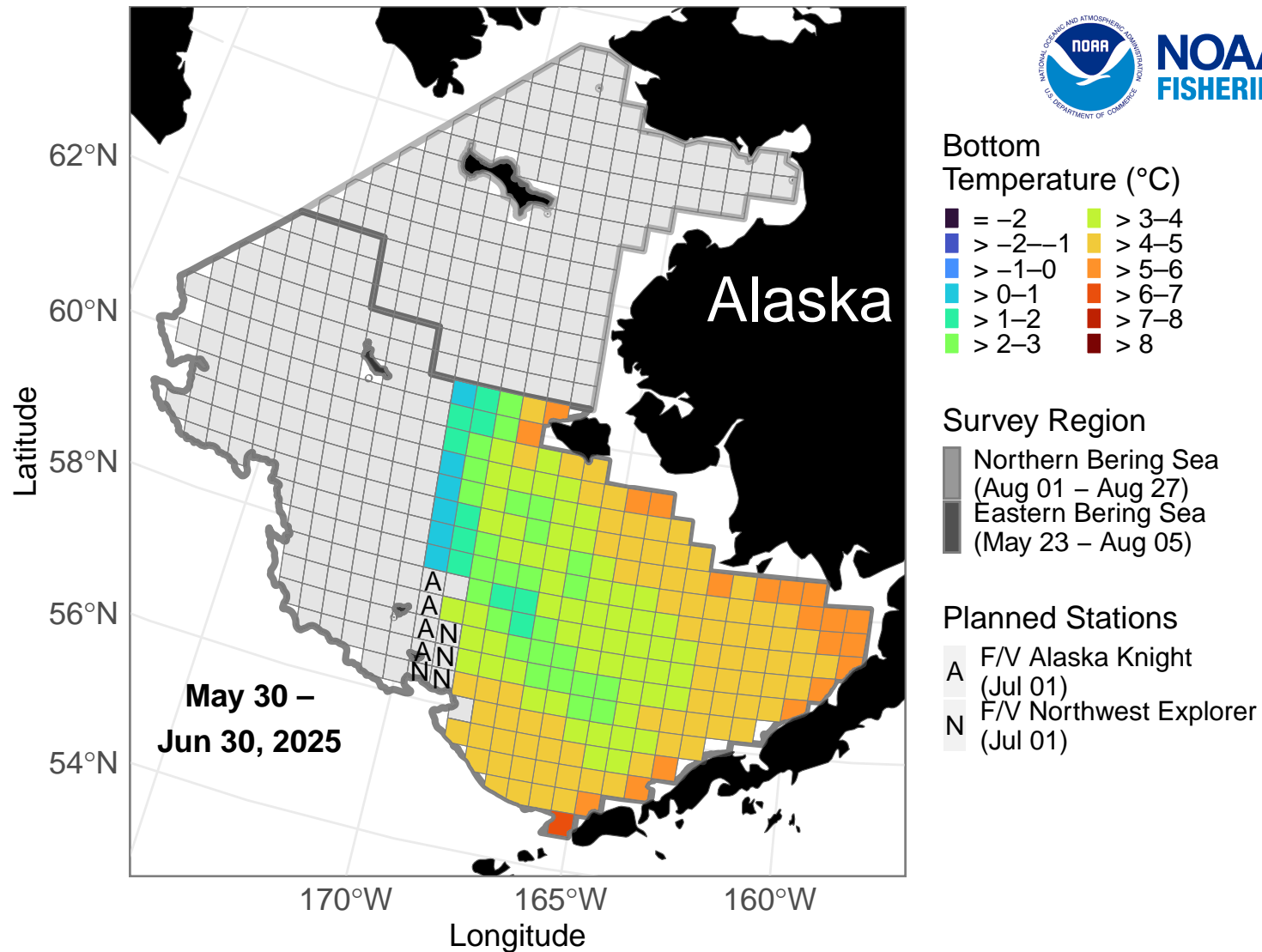
NOAA Fisheries Bering Sea Bottom Trawl Survey



NOAA Fisheries Alaska Fisheries Science Center Groundfish Assessment Program is conducting the eastern Bering Sea and northern Bering Sea bottom trawl surveys. The near real-time ocean bottom temperatures depicted were collected May 31-July 1. On July 1, four stations were surveyed by the F/V *Alaska Knight* and four stations were surveyed by the F/V *Northwest Explorer*. There are 5 stations planned for July 2. Credit: NOAA Fisheries

2025 Bottom Temperature (°C)

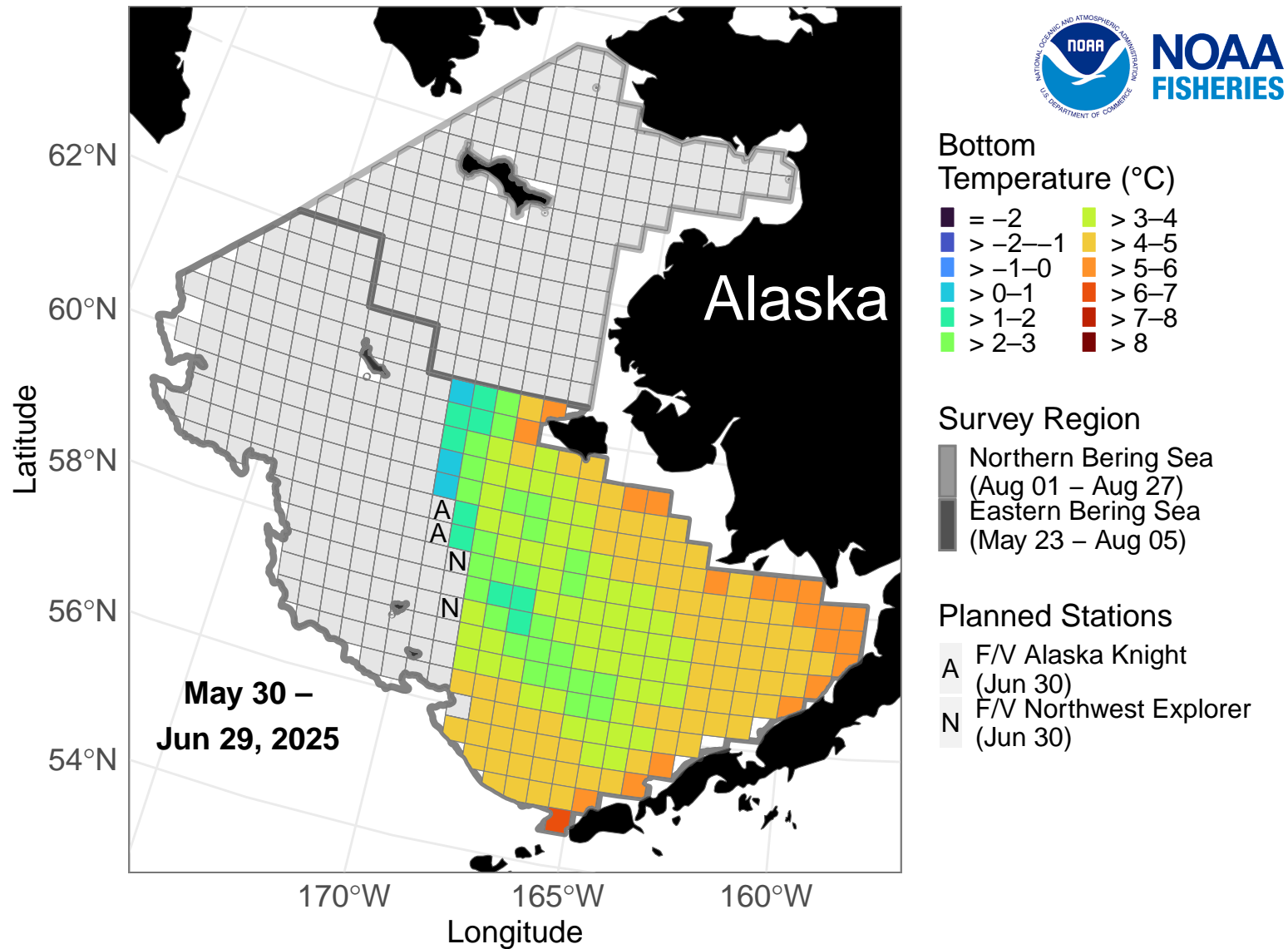
NOAA Fisheries Bering Sea Bottom Trawl Survey



NOAA Fisheries Alaska Fisheries Science Center Groundfish Assessment Program is conducting the eastern Bering Sea and northern Bering Sea bottom trawl surveys. The near real-time ocean bottom temperatures depicted were collected May 31-June 30. On June 30, three stations were surveyed by the F/V *Alaska Knight* and two stations were surveyed by the F/V *Northwest Explorer*. There are 8 stations planned for July 1. Credit: NOAA Fisheries

2025 Bottom Temperature (°C)

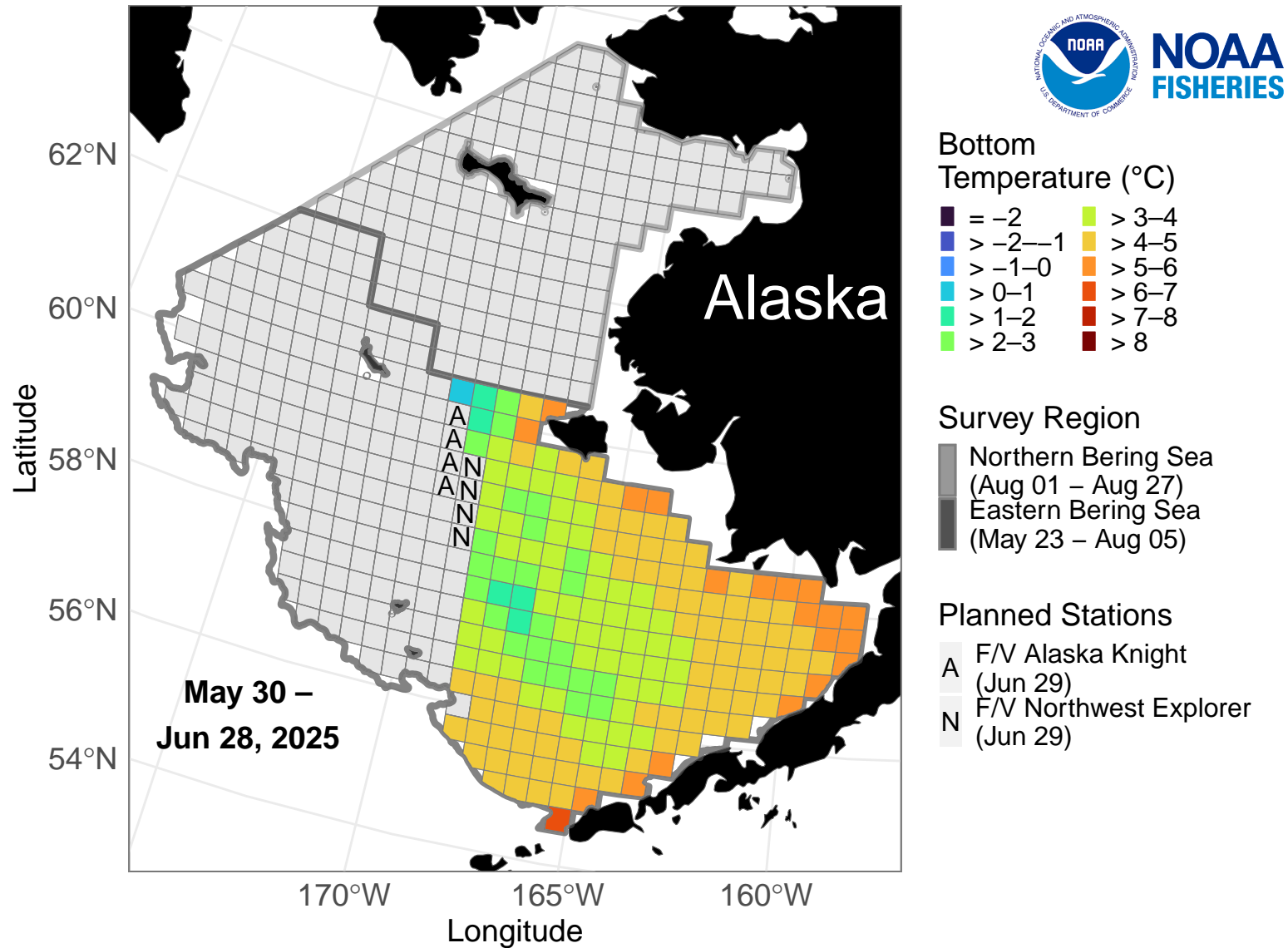
NOAA Fisheries Bering Sea Bottom Trawl Survey



NOAA Fisheries Alaska Fisheries Science Center Groundfish Assessment Program is conducting the eastern Bering Sea and northern Bering Sea bottom trawl surveys. The near real-time ocean bottom temperatures depicted were collected May 31-June 29. On June 29, four stations were surveyed by the F/V *Alaska Knight* and four stations were surveyed by the F/V *Northwest Explorer*. There are 4 stations planned for June 30. Credit: NOAA Fisheries

2025 Bottom Temperature (°C)

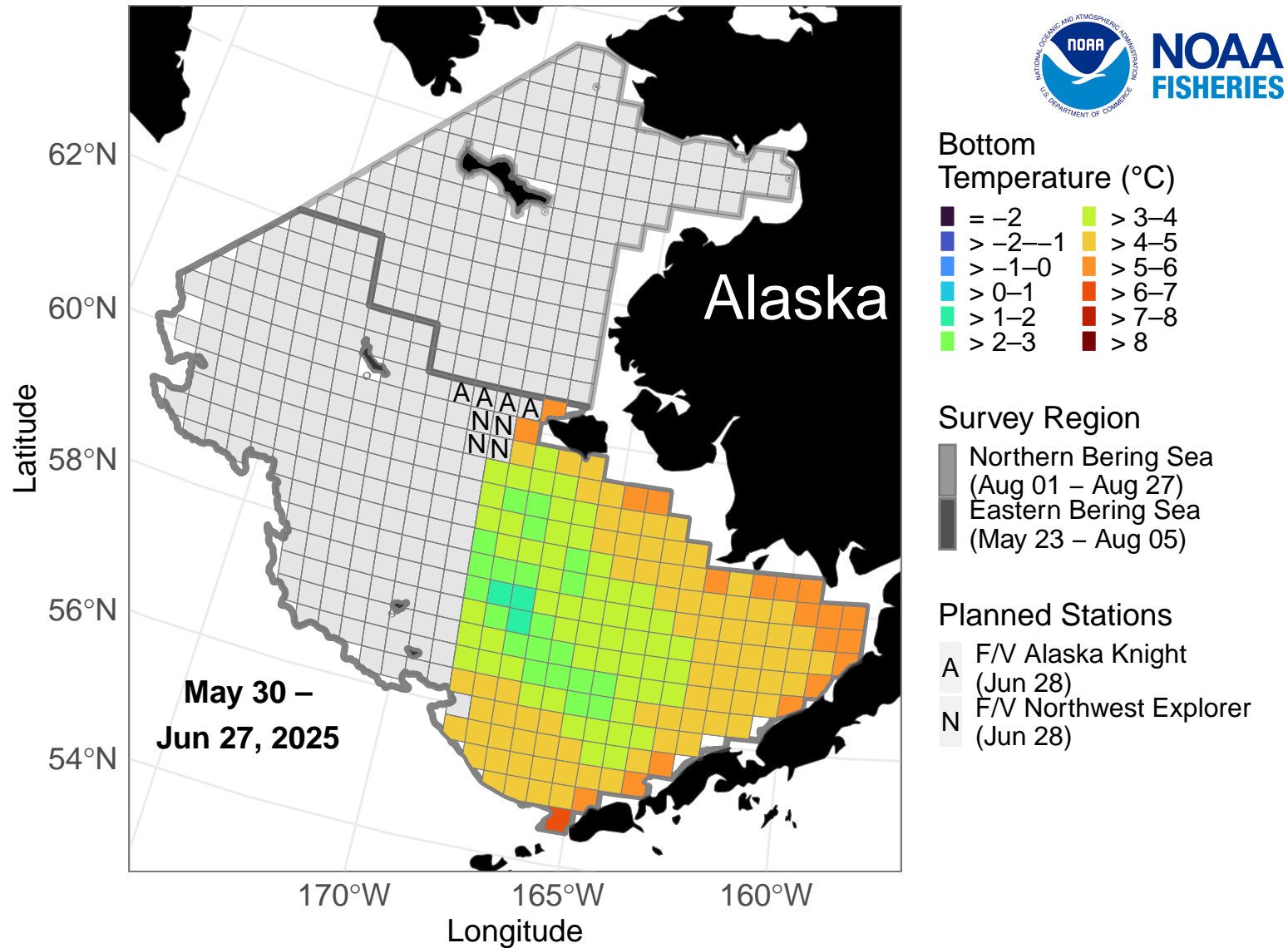
NOAA Fisheries Bering Sea Bottom Trawl Survey



NOAA Fisheries Alaska Fisheries Science Center Groundfish Assessment Program is conducting the eastern Bering Sea and northern Bering Sea bottom trawl surveys. The near real-time ocean bottom temperatures depicted were collected May 31-June 28. On June 28, four stations were surveyed by the F/V *Alaska Knight* and four stations were surveyed by the F/V *Northwest Explorer*. There are 8 stations planned for June 29. Credit: NOAA Fisheries

2025 Bottom Temperature (°C)

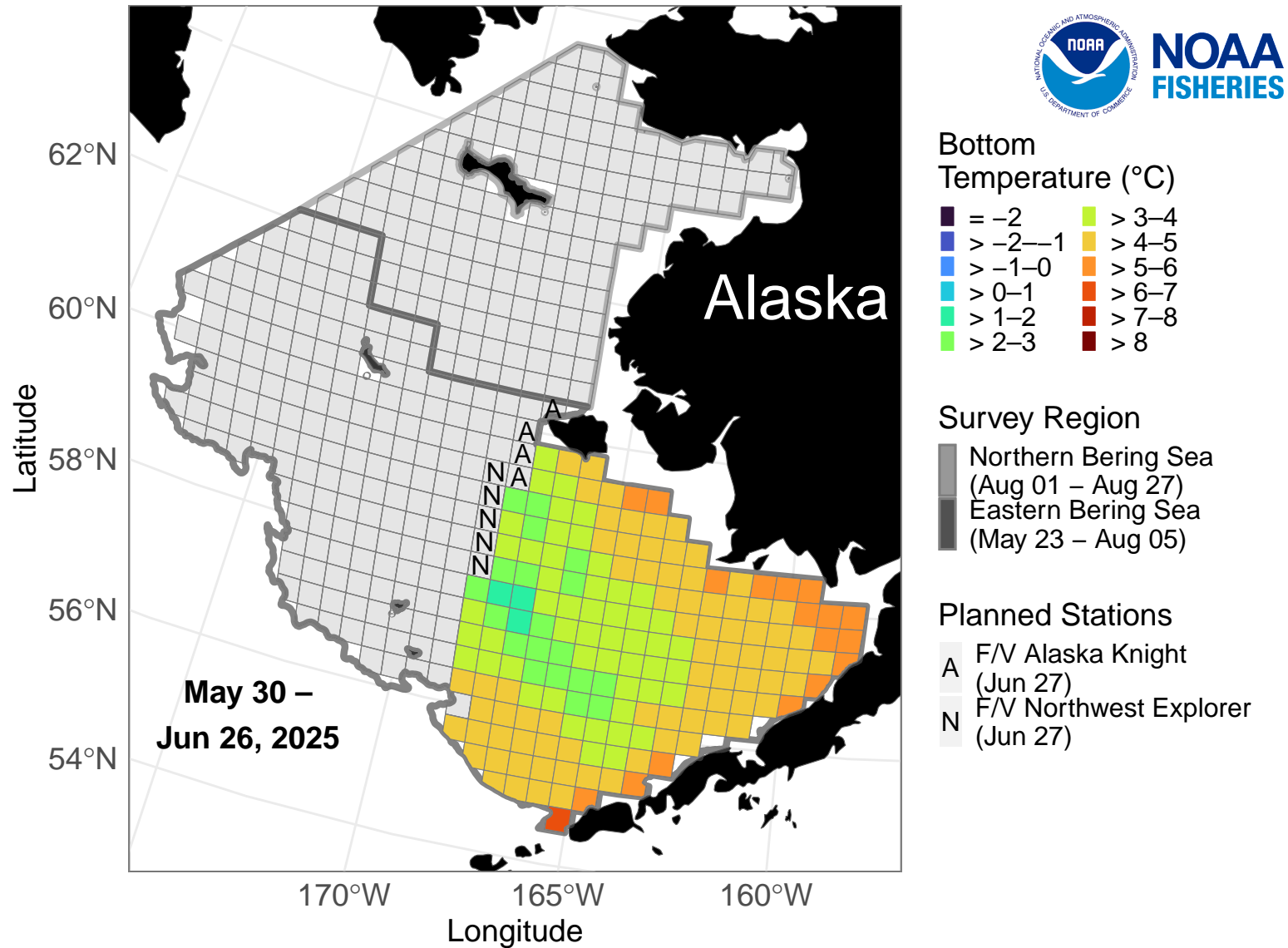
NOAA Fisheries Bering Sea Bottom Trawl Survey



NOAA Fisheries Alaska Fisheries Science Center Groundfish Assessment Program is conducting the eastern Bering Sea and northern Bering Sea bottom trawl surveys. The near real-time ocean bottom temperatures depicted were collected May 31-June 27. On June 27, four stations were surveyed by the F/V *Alaska Knight* and five stations were surveyed by the F/V *Northwest Explorer*. There are 8 stations planned for June 28. Credit: NOAA Fisheries

2025 Bottom Temperature (°C)

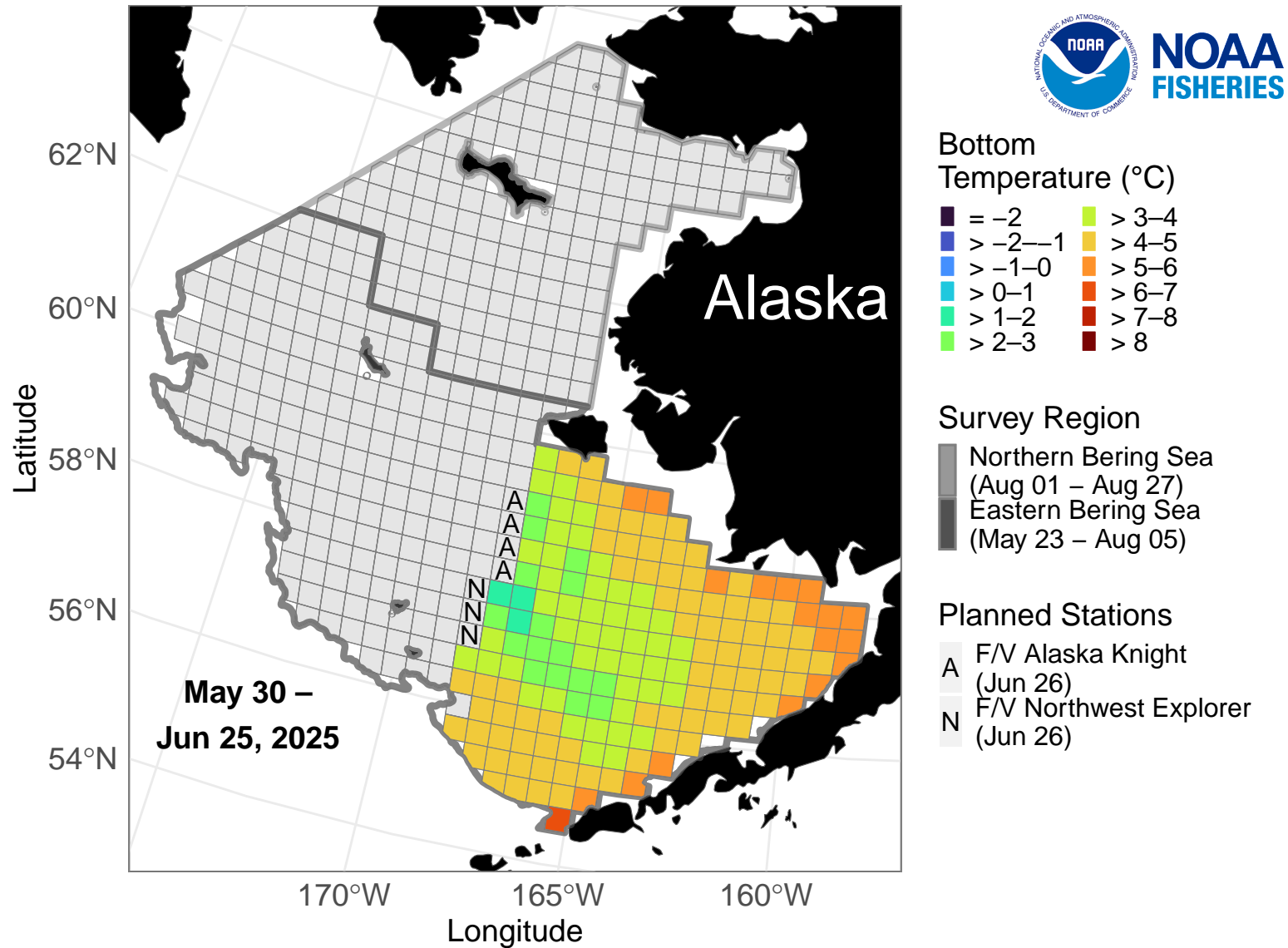
NOAA Fisheries Bering Sea Bottom Trawl Survey



NOAA Fisheries Alaska Fisheries Science Center Groundfish Assessment Program is conducting the eastern Bering Sea and northern Bering Sea bottom trawl surveys. The near real-time ocean bottom temperatures depicted were collected May 31-June 26. On June 26, four stations were surveyed by the F/V *Alaska Knight* and three stations were surveyed by the F/V *Northwest Explorer*. There are 9 stations planned for June 27. Credit: NOAA Fisheries

2025 Bottom Temperature (°C)

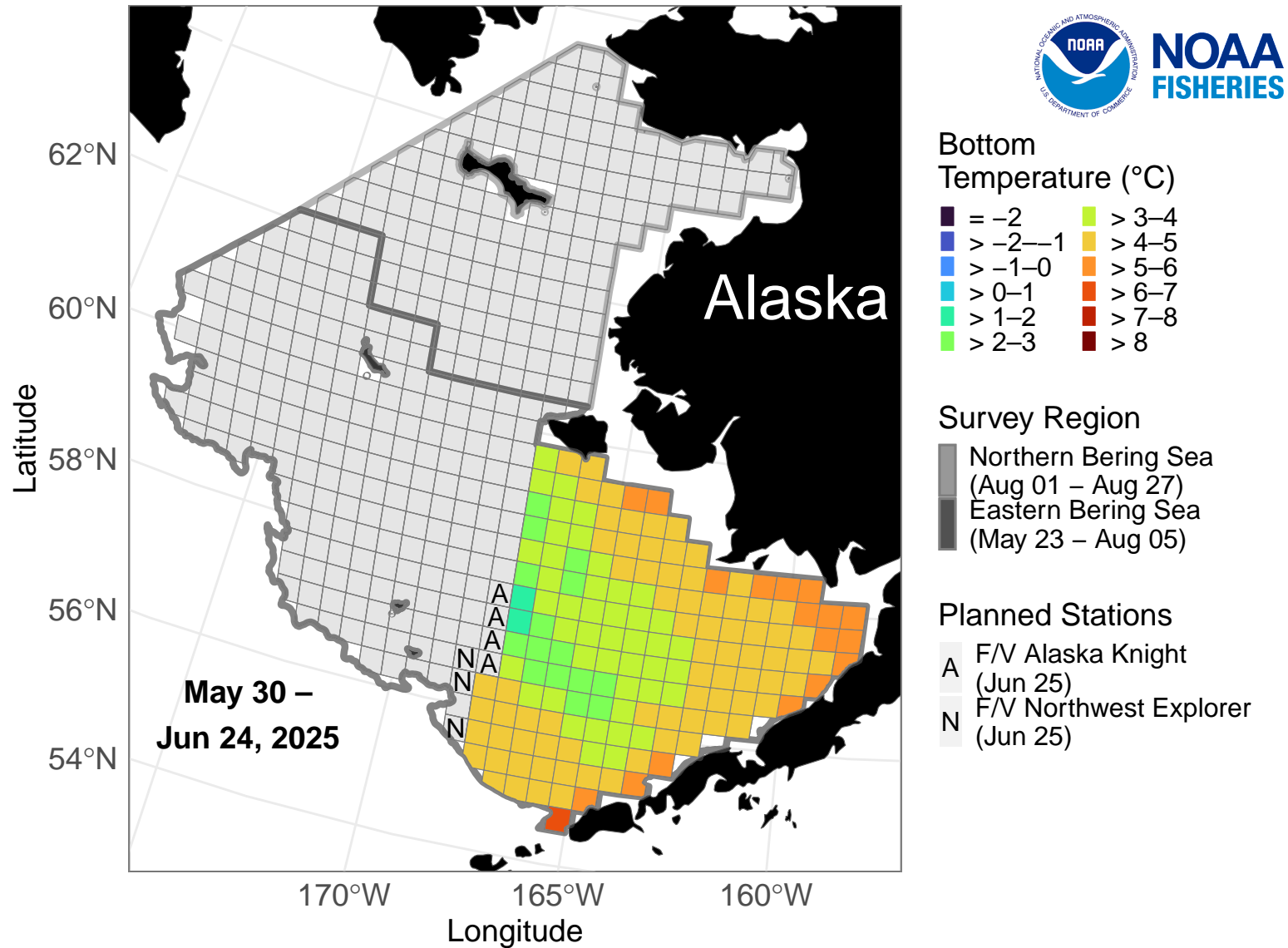
NOAA Fisheries Bering Sea Bottom Trawl Survey



NOAA Fisheries Alaska Fisheries Science Center Groundfish Assessment Program is conducting the eastern Bering Sea and northern Bering Sea bottom trawl surveys. The near real-time ocean bottom temperatures depicted were collected May 31-June 25. On June 25, four stations were surveyed by the F/V *Alaska Knight* and three stations were surveyed by the F/V *Northwest Explorer*. There are 7 stations planned for June 26. Credit: NOAA Fisheries

2025 Bottom Temperature (°C)

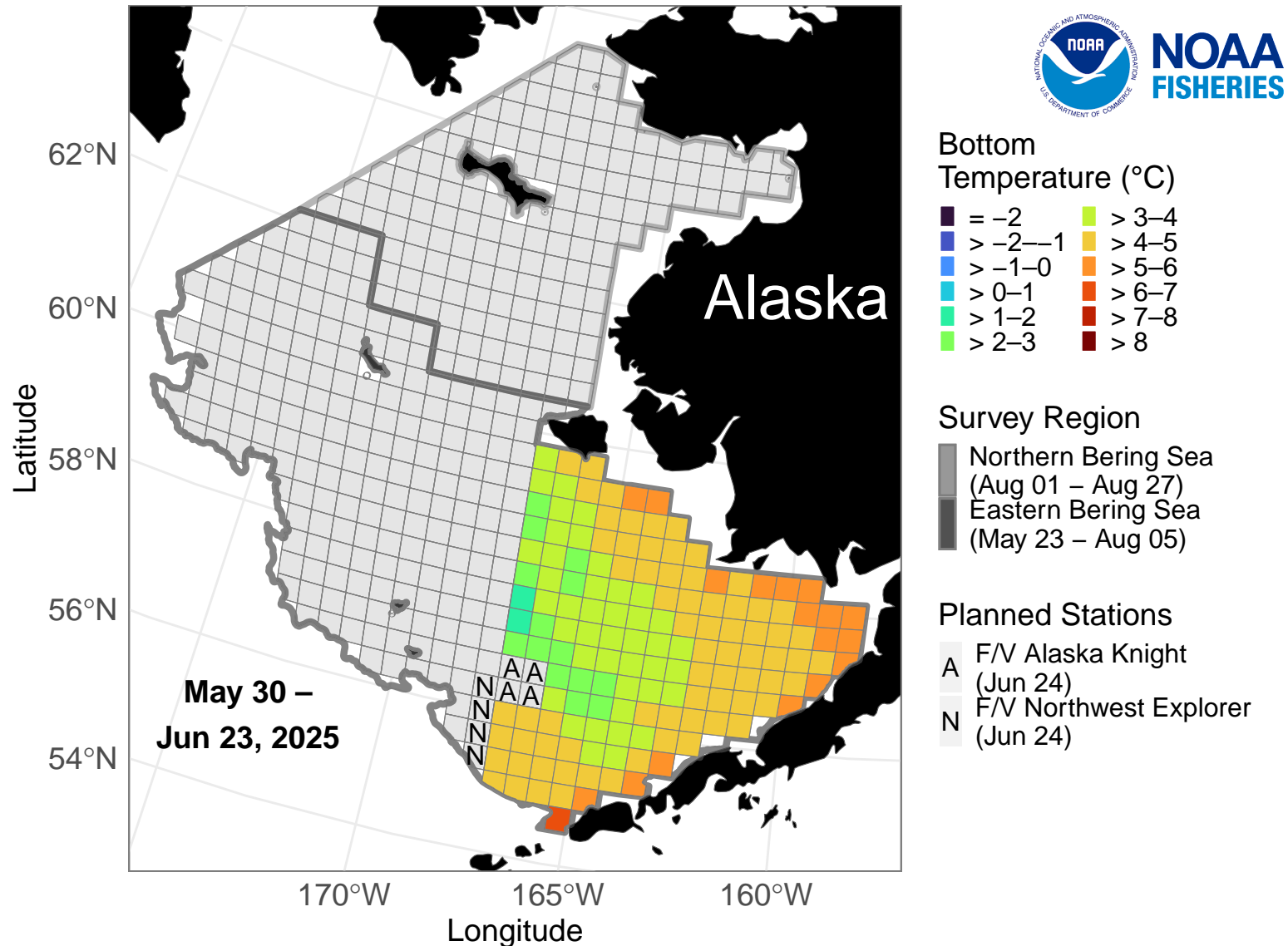
NOAA Fisheries Bering Sea Bottom Trawl Survey



NOAA Fisheries Alaska Fisheries Science Center Groundfish Assessment Program is conducting the eastern Bering Sea and northern Bering Sea bottom trawl surveys. The near real-time ocean bottom temperatures depicted were collected May 31-June 24. On June 24, four stations were surveyed by the F/V *Alaska Knight* and four stations were surveyed by the F/V *Northwest Explorer*. There are 7 stations planned for June 25. Credit: NOAA Fisheries

2025 Bottom Temperature (°C)

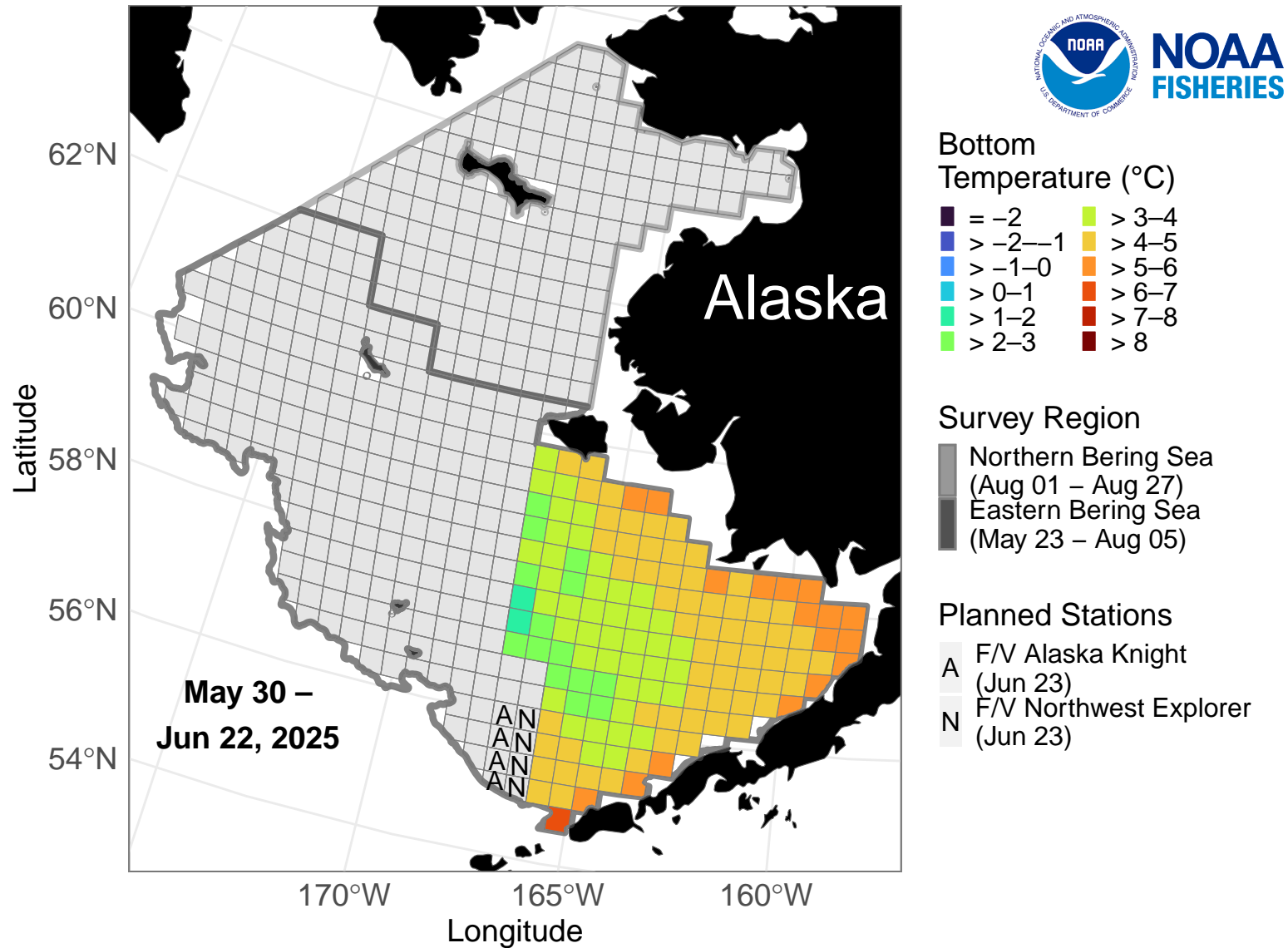
NOAA Fisheries Bering Sea Bottom Trawl Survey



NOAA Fisheries Alaska Fisheries Science Center Groundfish Assessment Program is conducting the eastern Bering Sea and northern Bering Sea bottom trawl surveys. The near real-time ocean bottom temperatures depicted were collected May 31-June 23. On June 23, four stations were surveyed by the F/V *Alaska Knight* and four stations were surveyed by the F/V *Northwest Explorer*. There are 8 stations planned for June 24. Credit: NOAA Fisheries

2025 Bottom Temperature (°C)

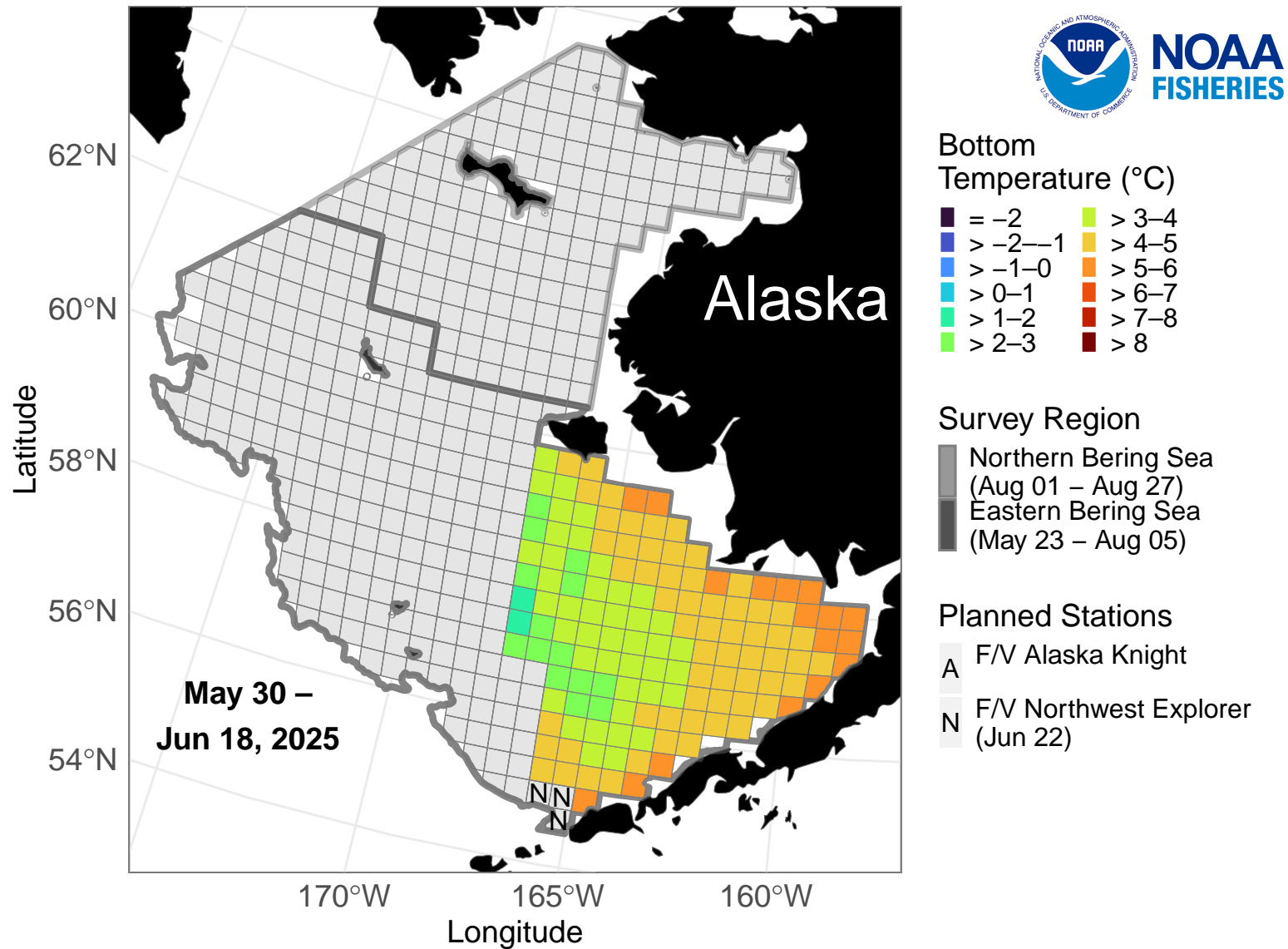
NOAA Fisheries Bering Sea Bottom Trawl Survey



NOAA Fisheries Alaska Fisheries Science Center Groundfish Assessment Program is conducting the eastern Bering Sea and northern Bering Sea bottom trawl surveys. The near real-time ocean bottom temperatures depicted were collected May 31-June 22. On June 22, three stations were surveyed by the F/V *Northwest Explorer*. No stations were surveyed by the F/V *Alaska Knight*. There are 8 stations planned for June 23. Credit: NOAA Fisheries

2025 Bottom Temperature (°C)

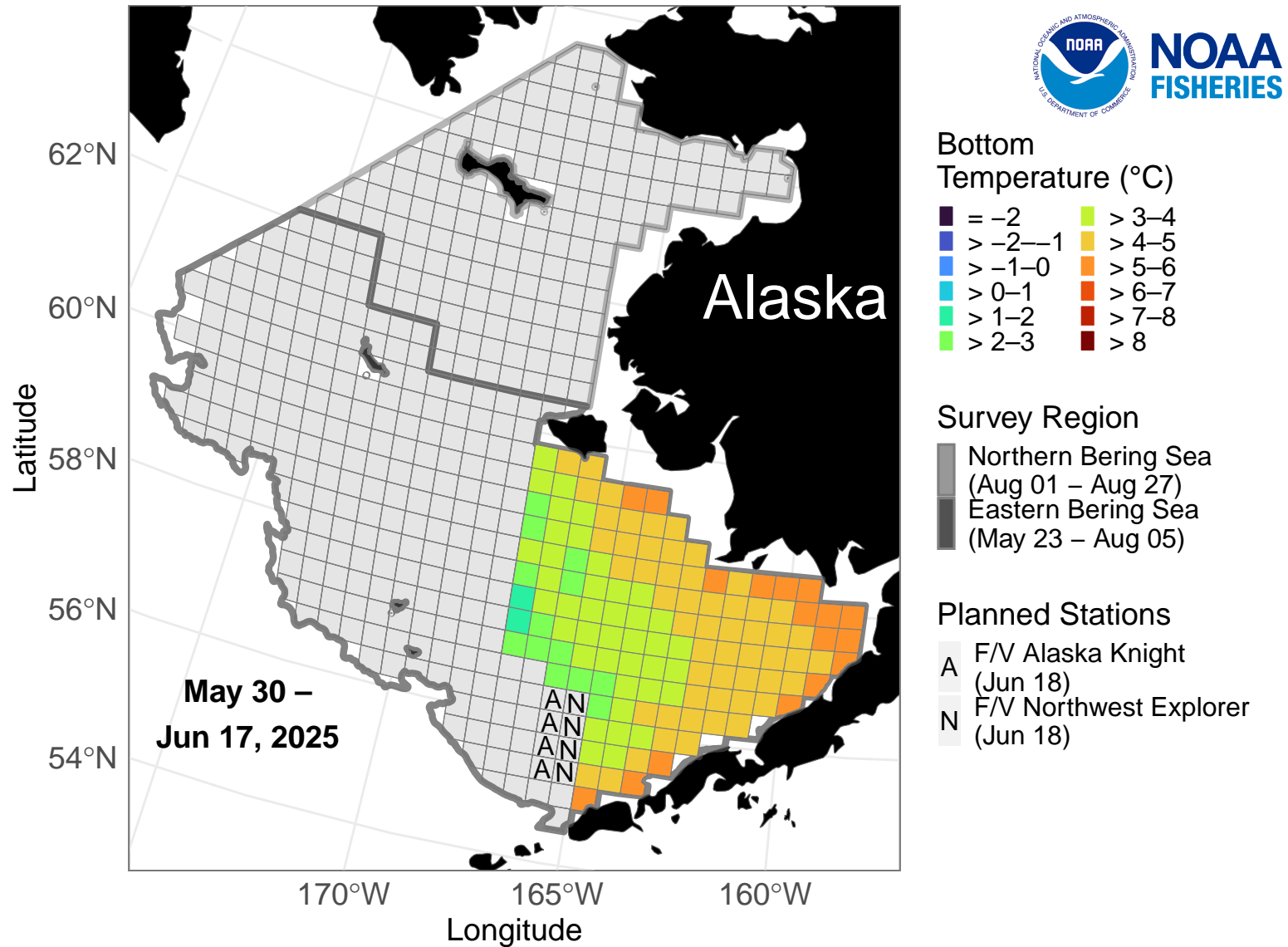
NOAA Fisheries Bering Sea Bottom Trawl Survey



NOAA Fisheries Alaska Fisheries Science Center Groundfish Assessment Program is conducting the eastern Bering Sea and northern Bering Sea bottom trawl surveys. The near real-time ocean bottom temperatures depicted were collected May 31-June 18. On June 18, four stations were surveyed by the F/V *Alaska Knight* and four stations were surveyed by the F/V *Northwest Explorer*. There are 3 stations planned for June 19. Credit: NOAA Fisheries

2025 Bottom Temperature (°C)

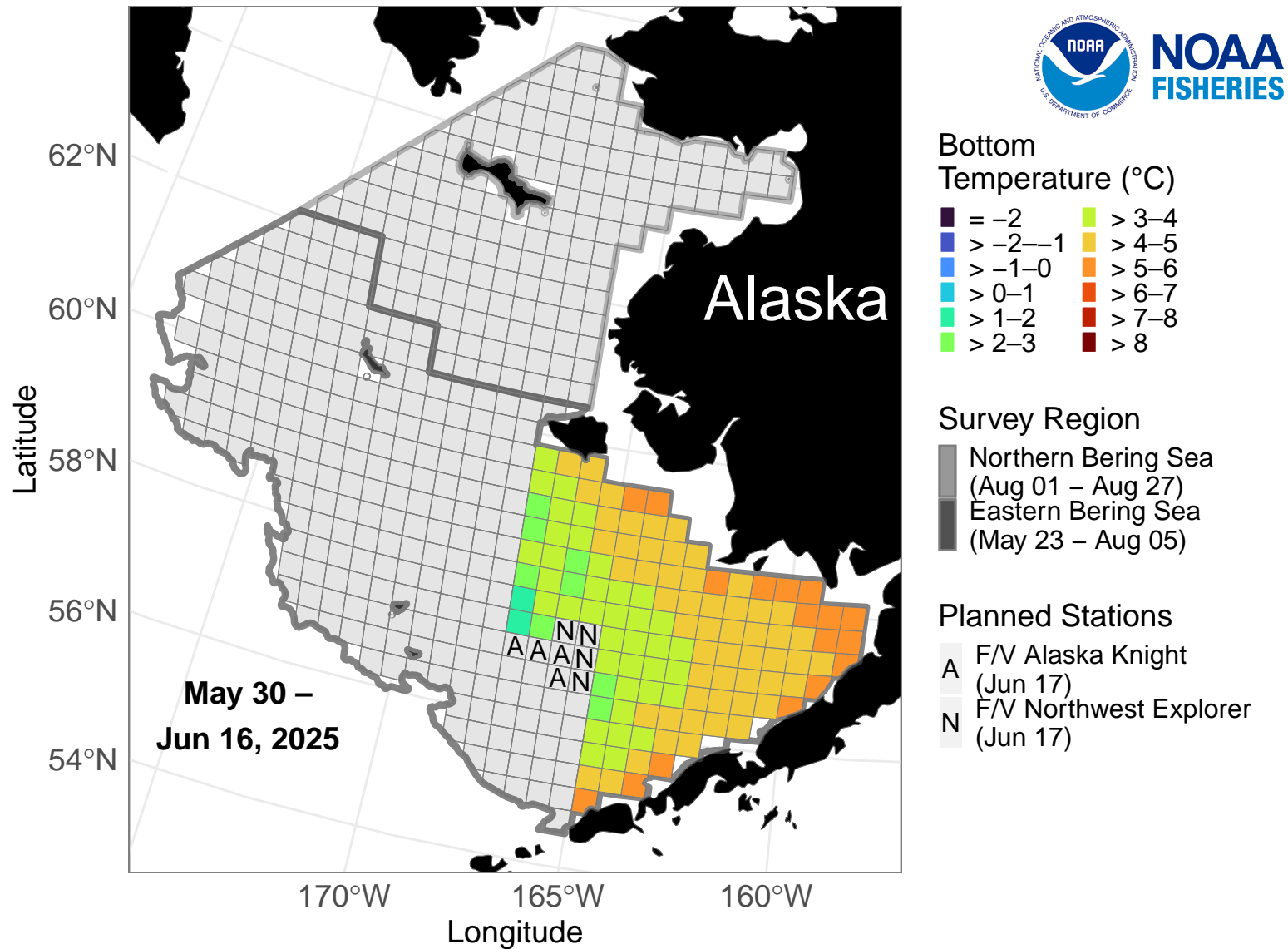
NOAA Fisheries Bering Sea Bottom Trawl Survey



NOAA Fisheries Alaska Fisheries Science Center Groundfish Assessment Program is conducting the eastern Bering Sea and northern Bering Sea bottom trawl surveys. The near real-time ocean bottom temperatures depicted were collected May 31-June 17. On June 17, four stations were surveyed by the F/V *Alaska Knight* and four stations were surveyed by the F/V *Northwest Explorer*. There are 8 stations planned for June 18. Credit: NOAA Fisheries

2025 Bottom Temperature (°C)

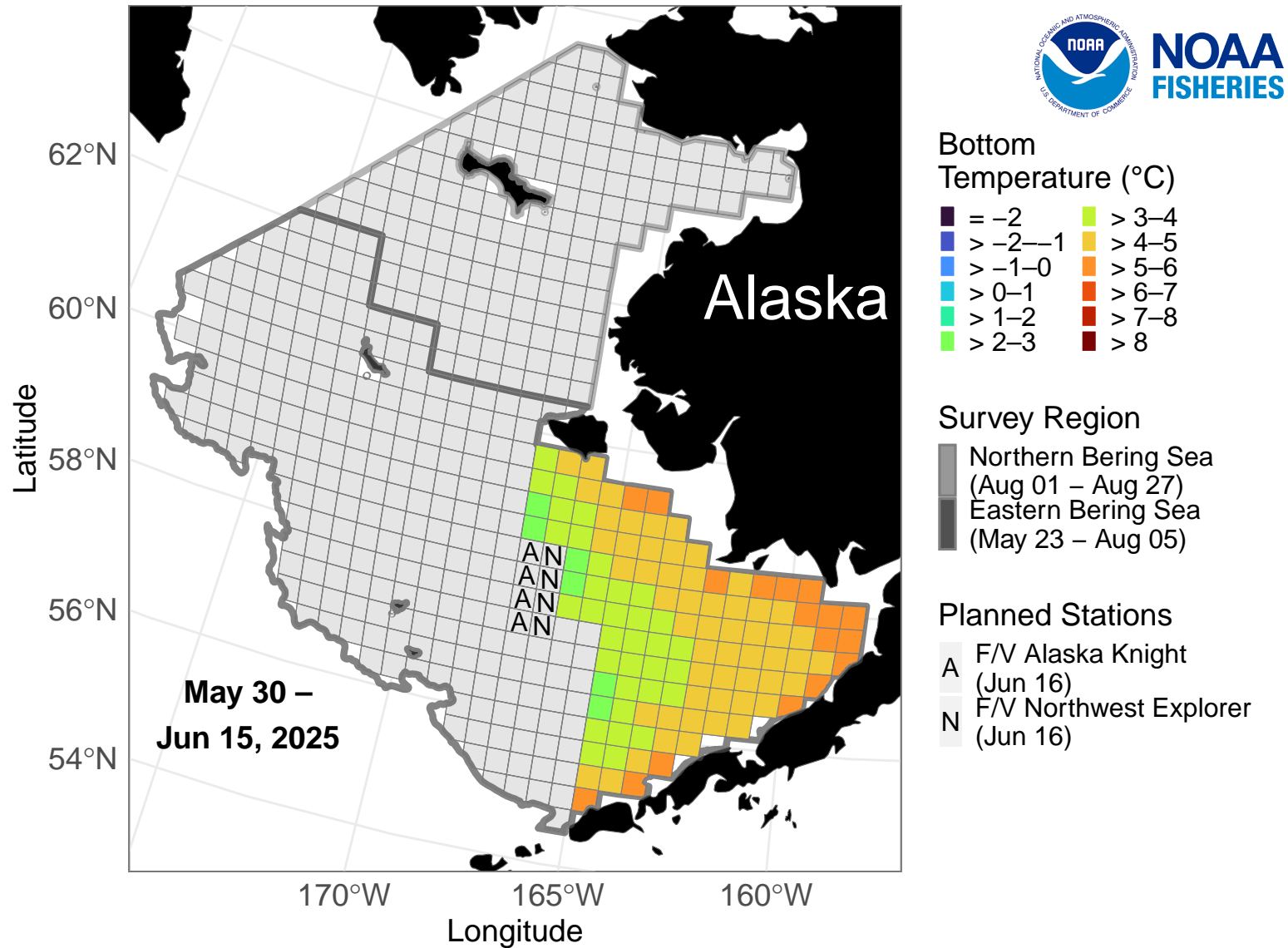
NOAA Fisheries Bering Sea Bottom Trawl Survey



NOAA Fisheries Alaska Fisheries Science Center Groundfish Assessment Program is conducting the eastern Bering Sea and northern Bering Sea bottom trawl surveys. The near real-time ocean bottom temperatures depicted were collected May 31-June 16. On June 16, four stations were surveyed by the F/V *Alaska Knight* and four stations were surveyed by the F/V *Northwest Explorer*. There are 8 stations planned for June 17. Credit: NOAA Fisheries

2025 Bottom Temperature (°C)

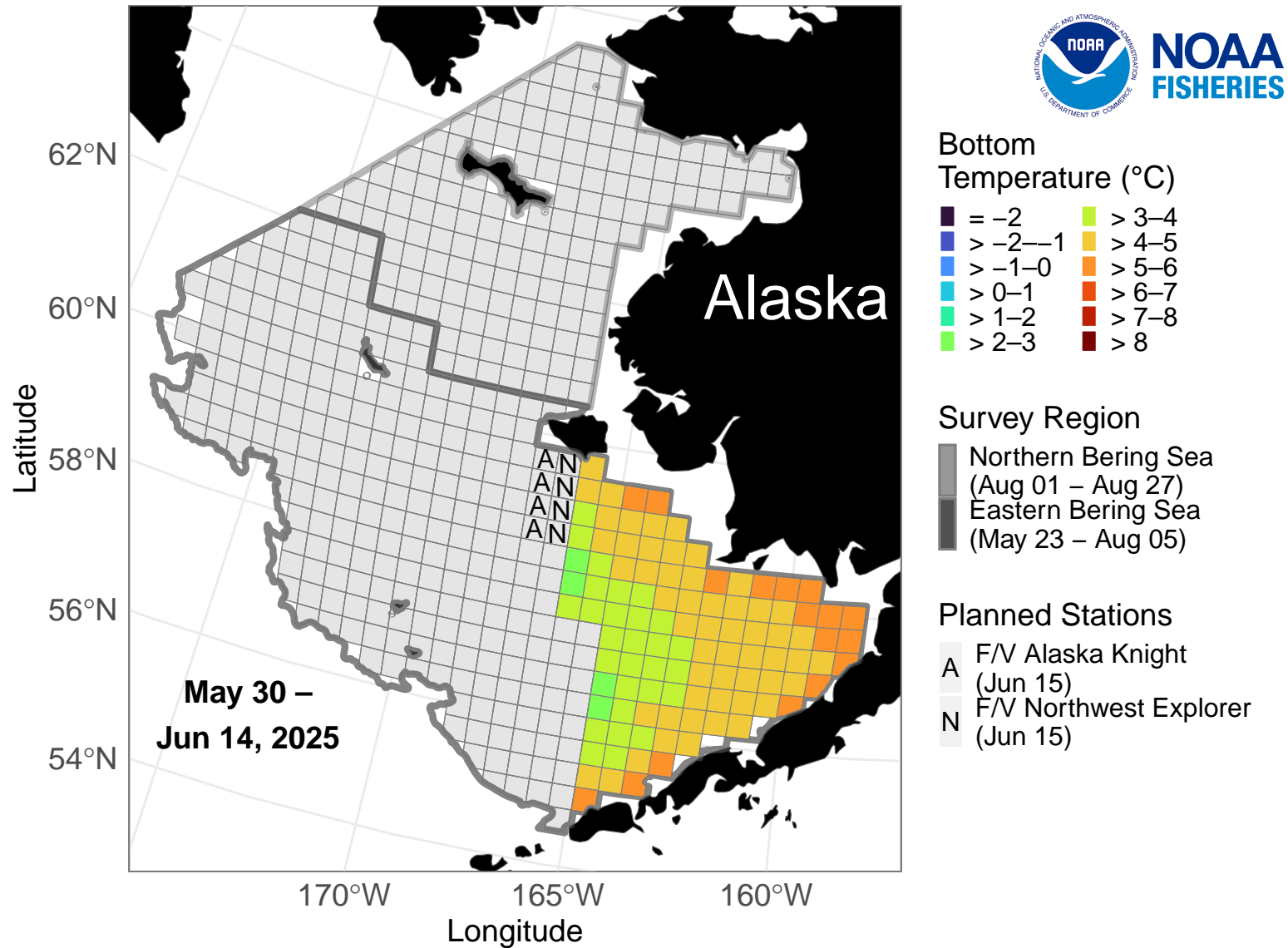
NOAA Fisheries Bering Sea Bottom Trawl Survey



NOAA Fisheries Alaska Fisheries Science Center Groundfish Assessment Program is conducting the eastern Bering Sea and northern Bering Sea bottom trawl surveys. The near real-time ocean bottom temperatures depicted were collected May 31-June 15. On June 15, four stations were surveyed by the F/V *Alaska Knight* and four stations were surveyed by the F/V *Northwest Explorer*. There are 8 stations planned for June 16. Credit: NOAA Fisheries

2025 Bottom Temperature (°C)

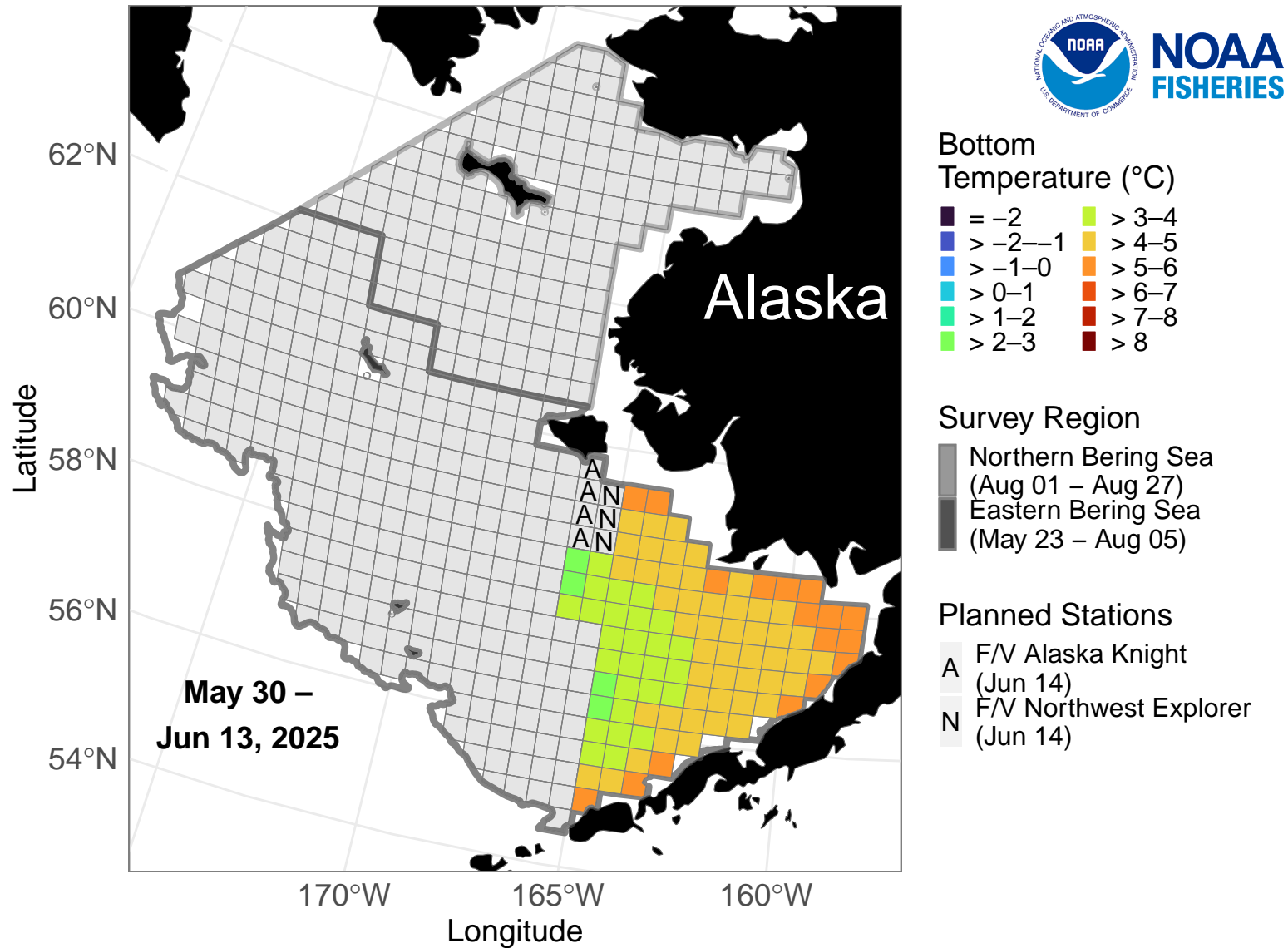
NOAA Fisheries Bering Sea Bottom Trawl Survey



NOAA Fisheries Alaska Fisheries Science Center Groundfish Assessment Program is conducting the eastern Bering Sea and northern Bering Sea bottom trawl surveys. The near real-time ocean bottom temperatures depicted were collected May 31-June 14. On June 14, four stations were surveyed by the F/V *Alaska Knight* and three stations were surveyed by the F/V *Northwest Explorer*. There are 8 stations planned for June 15. Credit: NOAA Fisheries

2025 Bottom Temperature (°C)

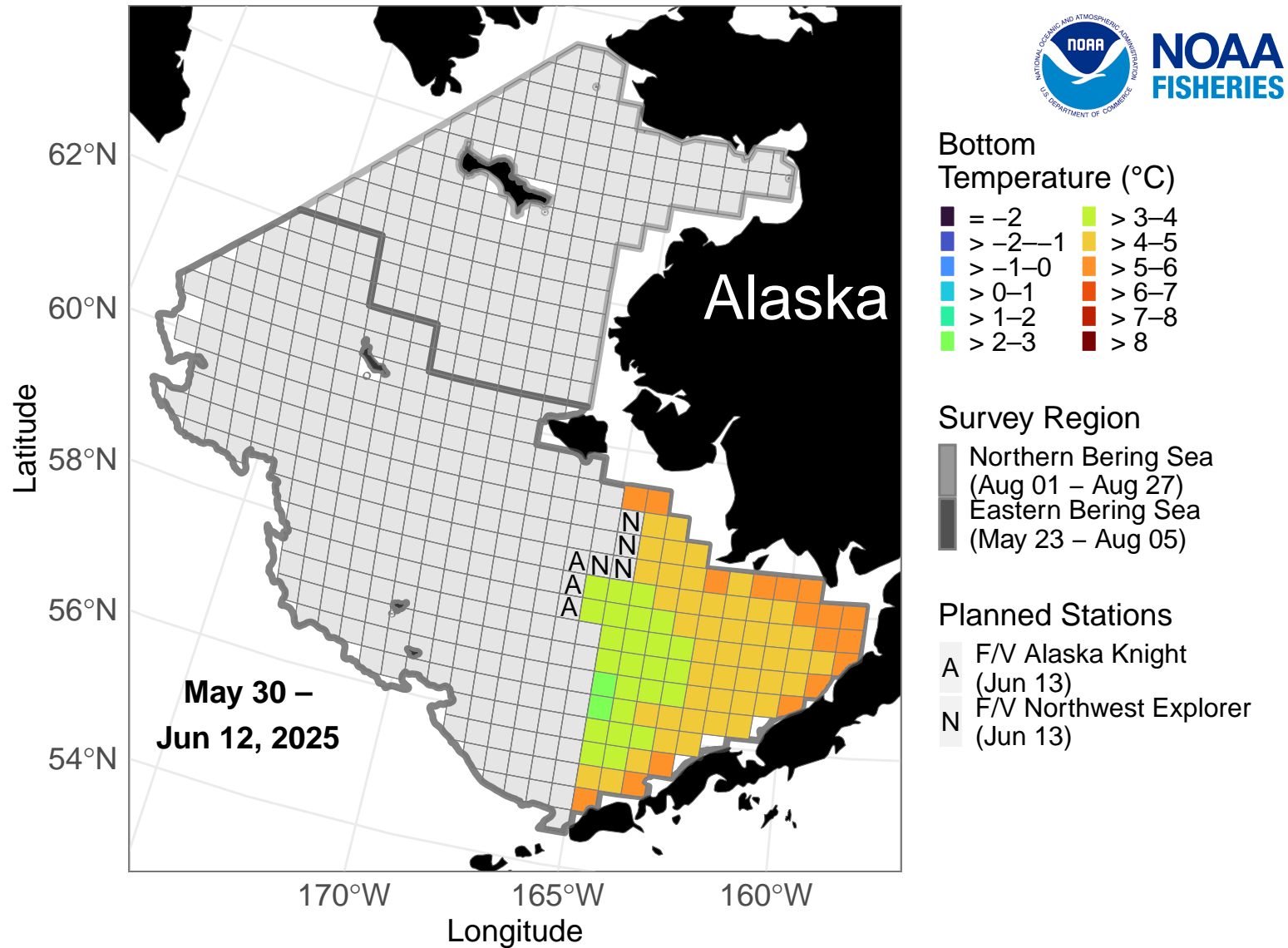
NOAA Fisheries Bering Sea Bottom Trawl Survey



NOAA Fisheries Alaska Fisheries Science Center Groundfish Assessment Program is conducting the eastern Bering Sea and northern Bering Sea bottom trawl surveys. The near real-time ocean bottom temperatures depicted were collected May 31-June 13. On June 13, three stations were surveyed by the F/V *Alaska Knight* and four stations were surveyed by the F/V *Northwest Explorer*. There are 7 stations planned for June 14. Credit: NOAA Fisheries

2025 Bottom Temperature (°C)

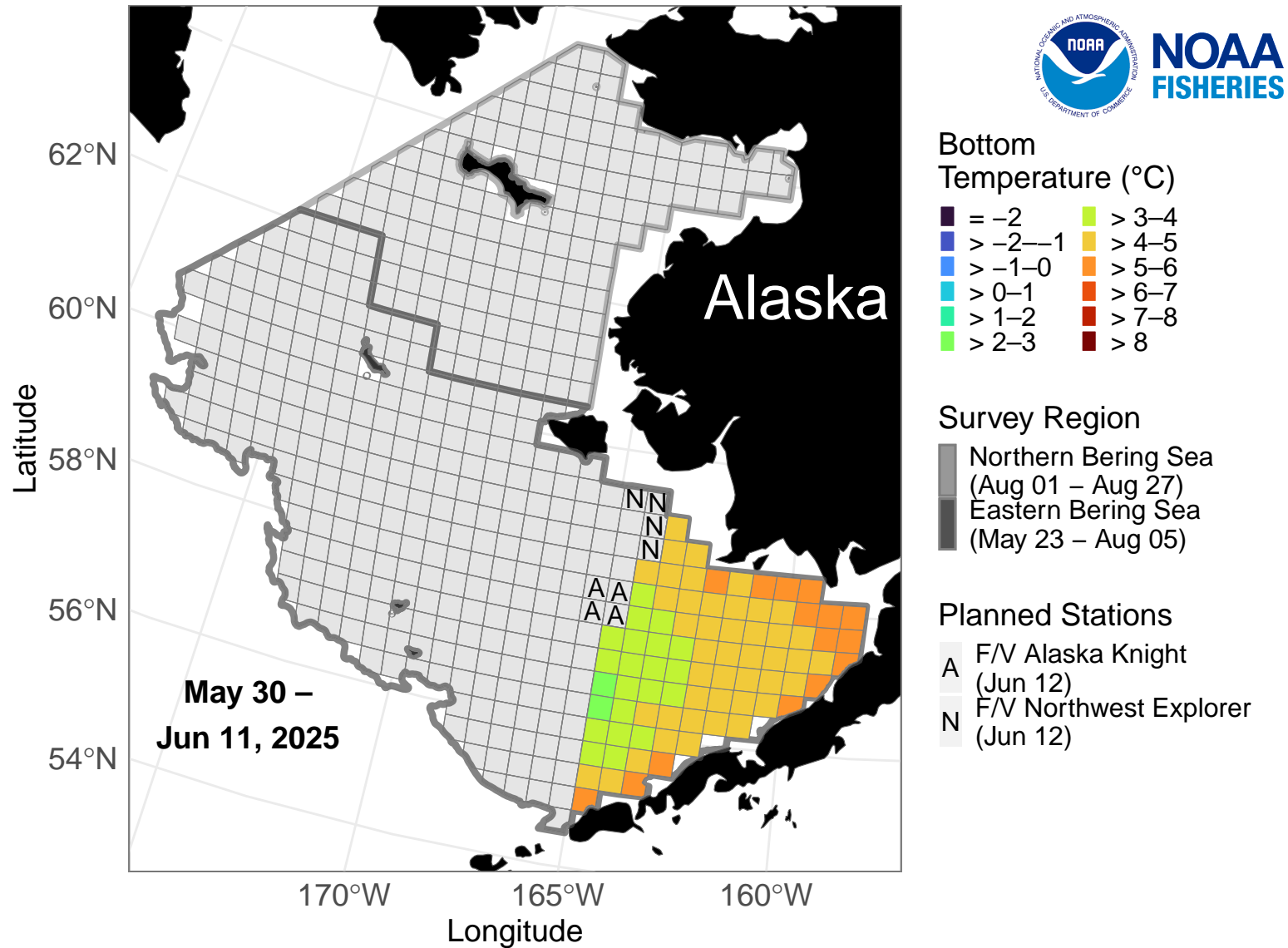
NOAA Fisheries Bering Sea Bottom Trawl Survey



NOAA Fisheries Alaska Fisheries Science Center Groundfish Assessment Program is conducting the eastern Bering Sea and northern Bering Sea bottom trawl surveys. The near real-time ocean bottom temperatures depicted were collected May 31-June 12. On June 12, four stations were surveyed by the F/V *Alaska Knight* and four stations were surveyed by the F/V *Northwest Explorer*. There are 7 stations planned for June 13. Credit: NOAA Fisheries

2025 Bottom Temperature (°C)

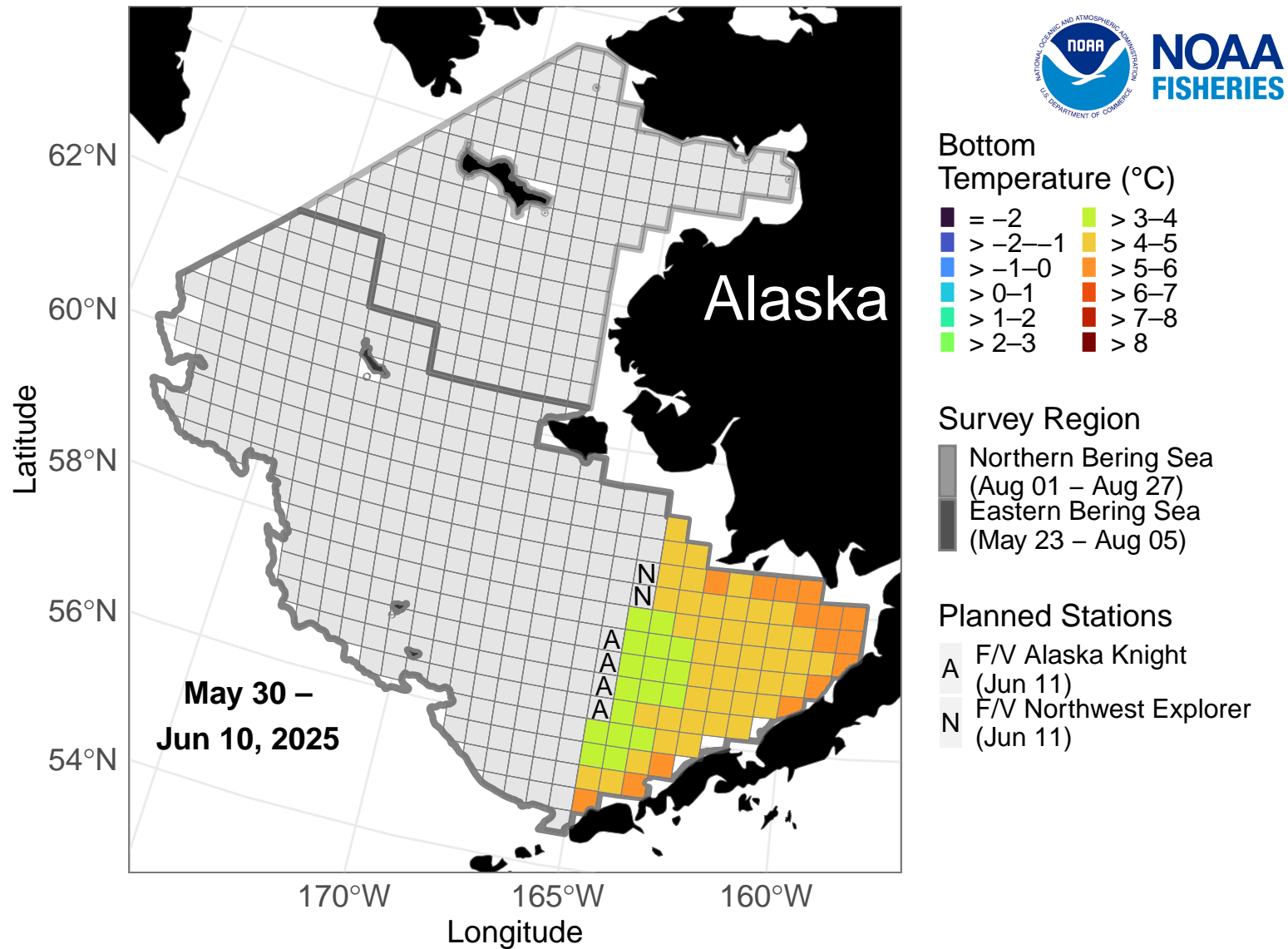
NOAA Fisheries Bering Sea Bottom Trawl Survey



NOAA Fisheries Alaska Fisheries Science Center Groundfish Assessment Program is conducting the eastern Bering Sea and northern Bering Sea bottom trawl surveys. The near real-time ocean bottom temperatures depicted were collected May 31-June 11. On June 11, four stations were surveyed by the F/V *Alaska Knight* and two stations were surveyed by the F/V *Northwest Explorer*. There are 8 stations planned for June 12. Credit: NOAA Fisheries

2025 Bottom Temperature (°C)

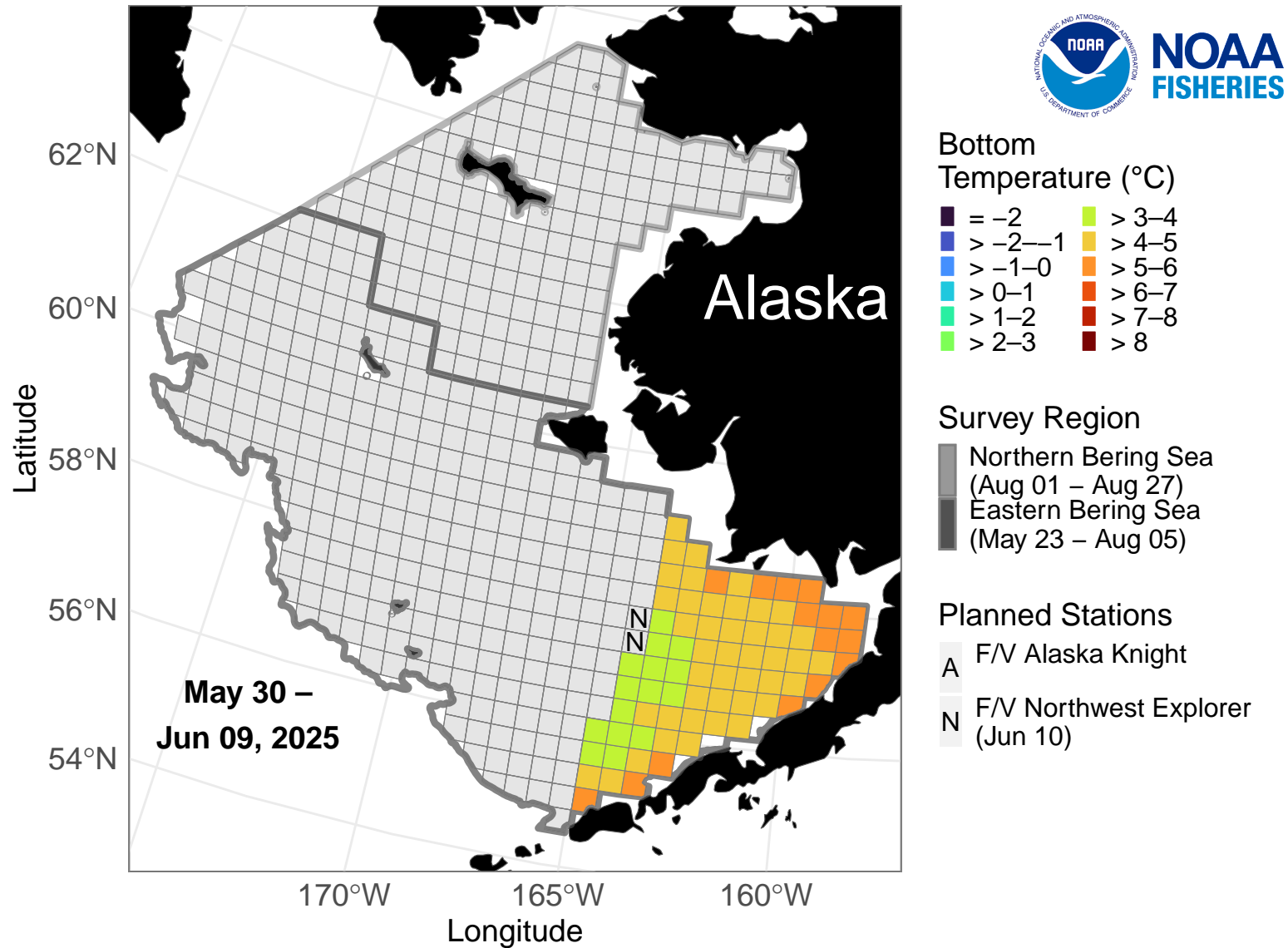
NOAA Fisheries Bering Sea Bottom Trawl Survey



NOAA Fisheries Alaska Fisheries Science Center Groundfish Assessment Program is conducting the eastern Bering Sea and northern Bering Sea bottom trawl surveys. The near real-time ocean bottom temperatures depicted were collected May 31-June 10. On June 10, two stations were surveyed by the F/V *Northwest Explorer*. No stations were surveyed by the F/V *Alaska Knight*. There are 6 stations planned for June 11. Credit: NOAA Fisheries

2025 Bottom Temperature (°C)

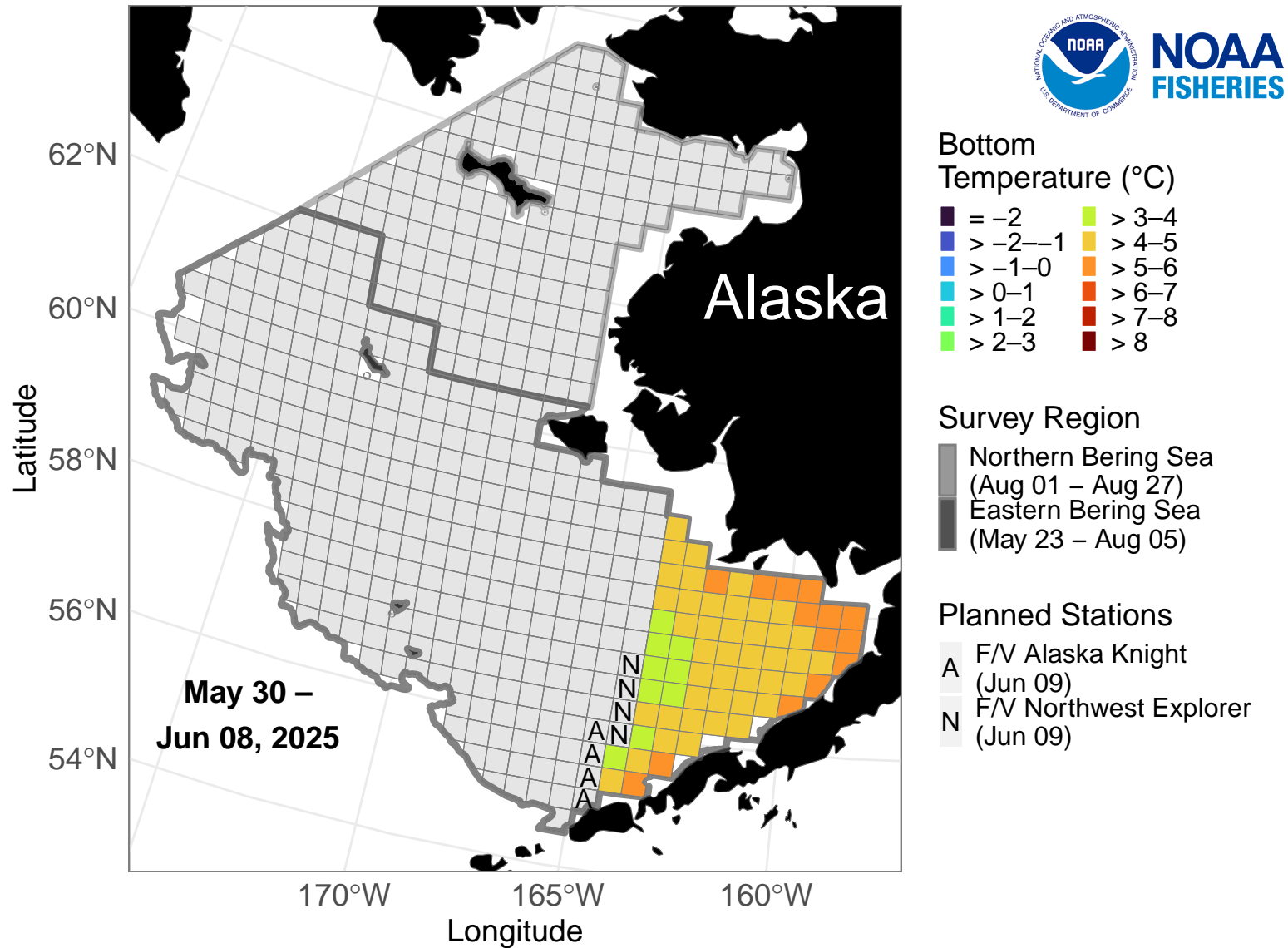
NOAA Fisheries Bering Sea Bottom Trawl Survey



NOAA Fisheries Alaska Fisheries Science Center Groundfish Assessment Program is conducting the eastern Bering Sea and northern Bering Sea bottom trawl surveys. The near real-time ocean bottom temperatures depicted were collected May 31-June 9. On June 9, four stations were surveyed by the F/V *Alaska Knight* and four stations were surveyed by the F/V *Northwest Explorer*. There are 2 stations planned for June 10. Credit: NOAA Fisheries

2025 Bottom Temperature (°C)

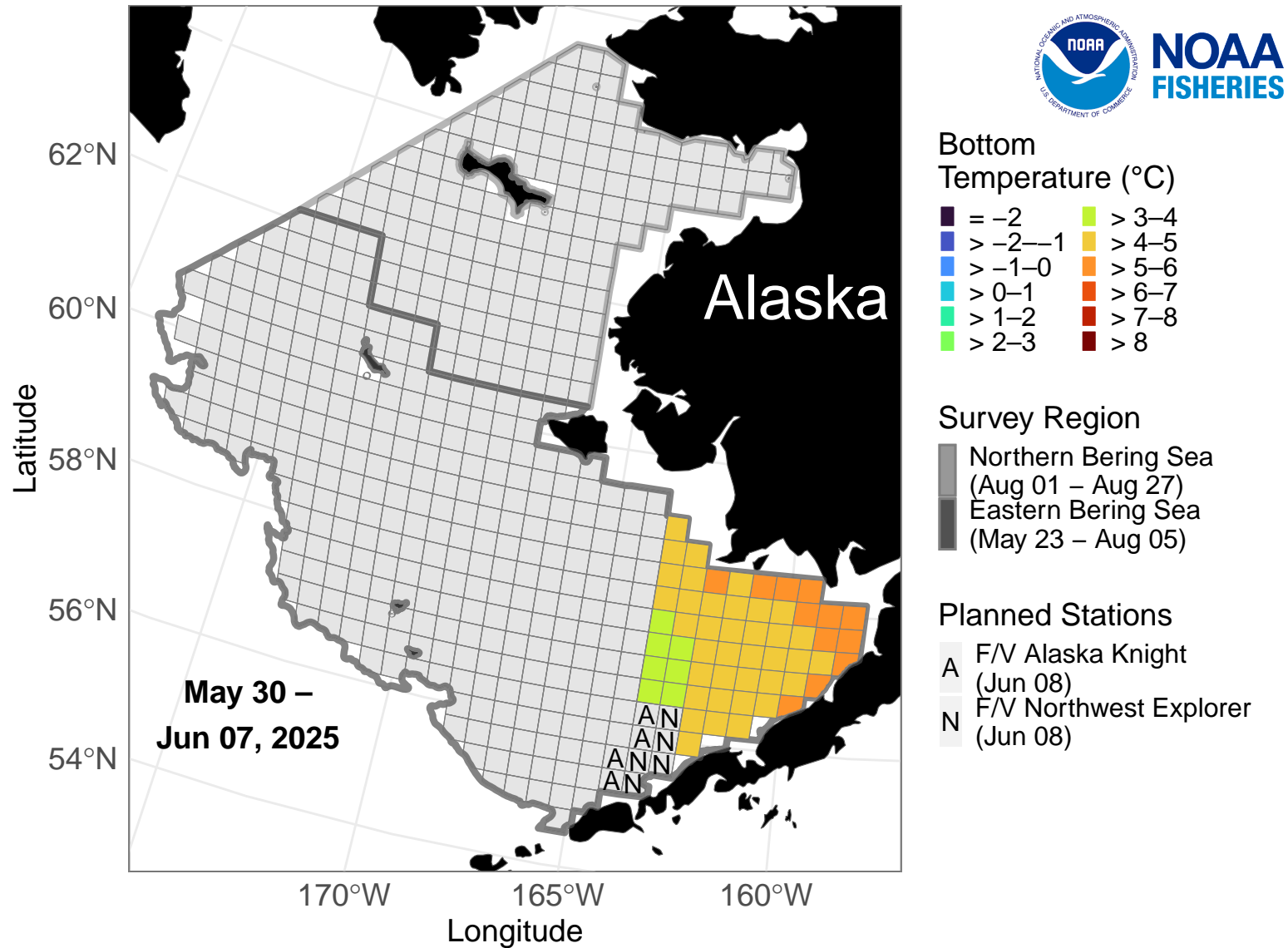
NOAA Fisheries Bering Sea Bottom Trawl Survey



NOAA Fisheries Alaska Fisheries Science Center Groundfish Assessment Program is conducting the eastern Bering Sea and northern Bering Sea bottom trawl surveys. The near real-time ocean bottom temperatures depicted were collected May 31-June 8. On June 8, four stations were surveyed by the F/V *Alaska Knight* and five stations were surveyed by the F/V *Northwest Explorer*. There are 8 stations planned for June 9. Credit: NOAA Fisheries

2025 Bottom Temperature (°C)

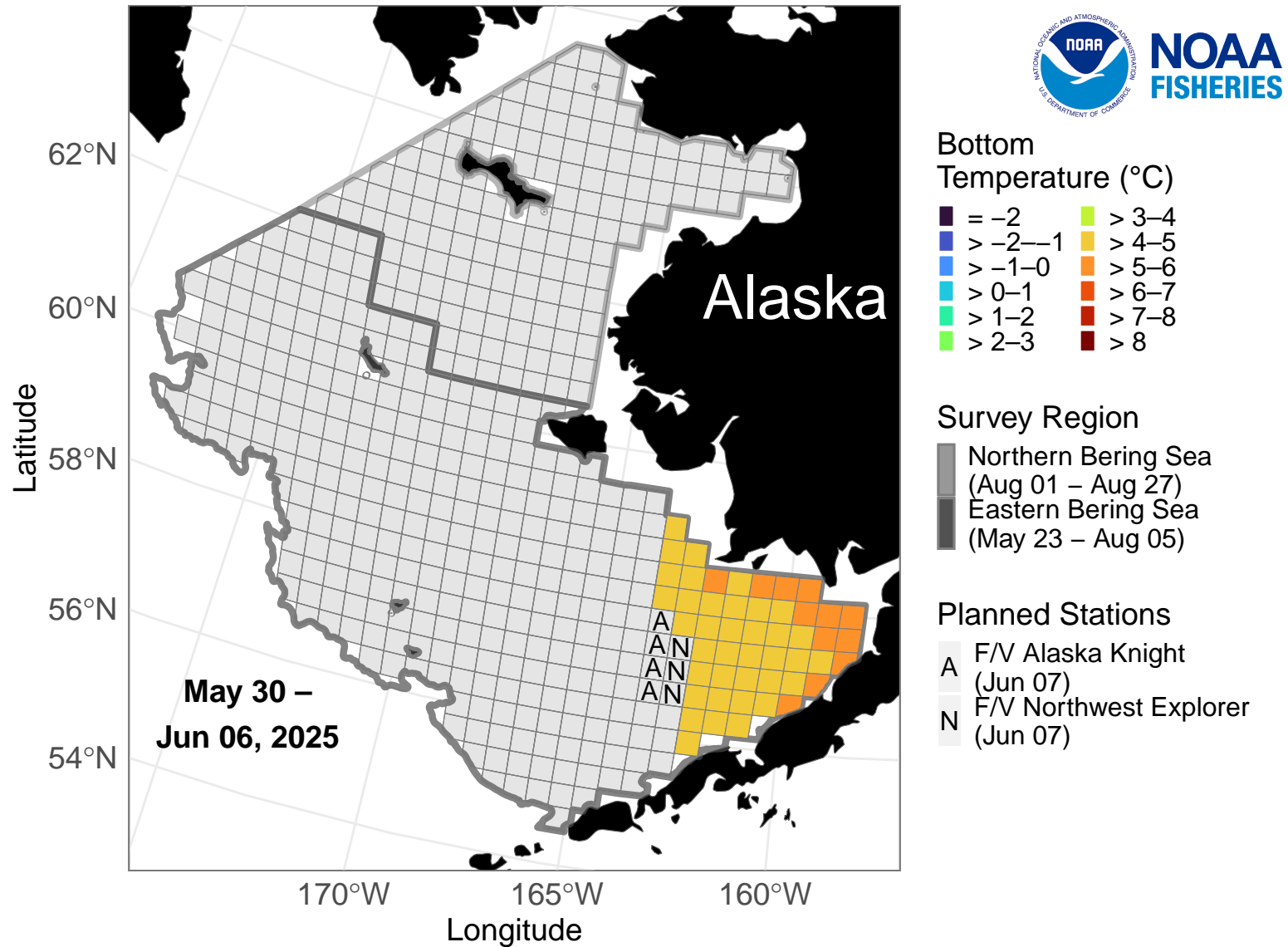
NOAA Fisheries Bering Sea Bottom Trawl Survey



NOAA Fisheries Alaska Fisheries Science Center Groundfish Assessment Program is conducting the eastern Bering Sea and northern Bering Sea bottom trawl surveys. The near real-time ocean bottom temperatures depicted were collected May 31-June 7. On June 7, four stations were surveyed by the F/V *Alaska Knight* and three stations were surveyed by the F/V *Northwest Explorer*. There are 9 stations planned for June 8. Credit: NOAA Fisheries

2025 Bottom Temperature (°C)

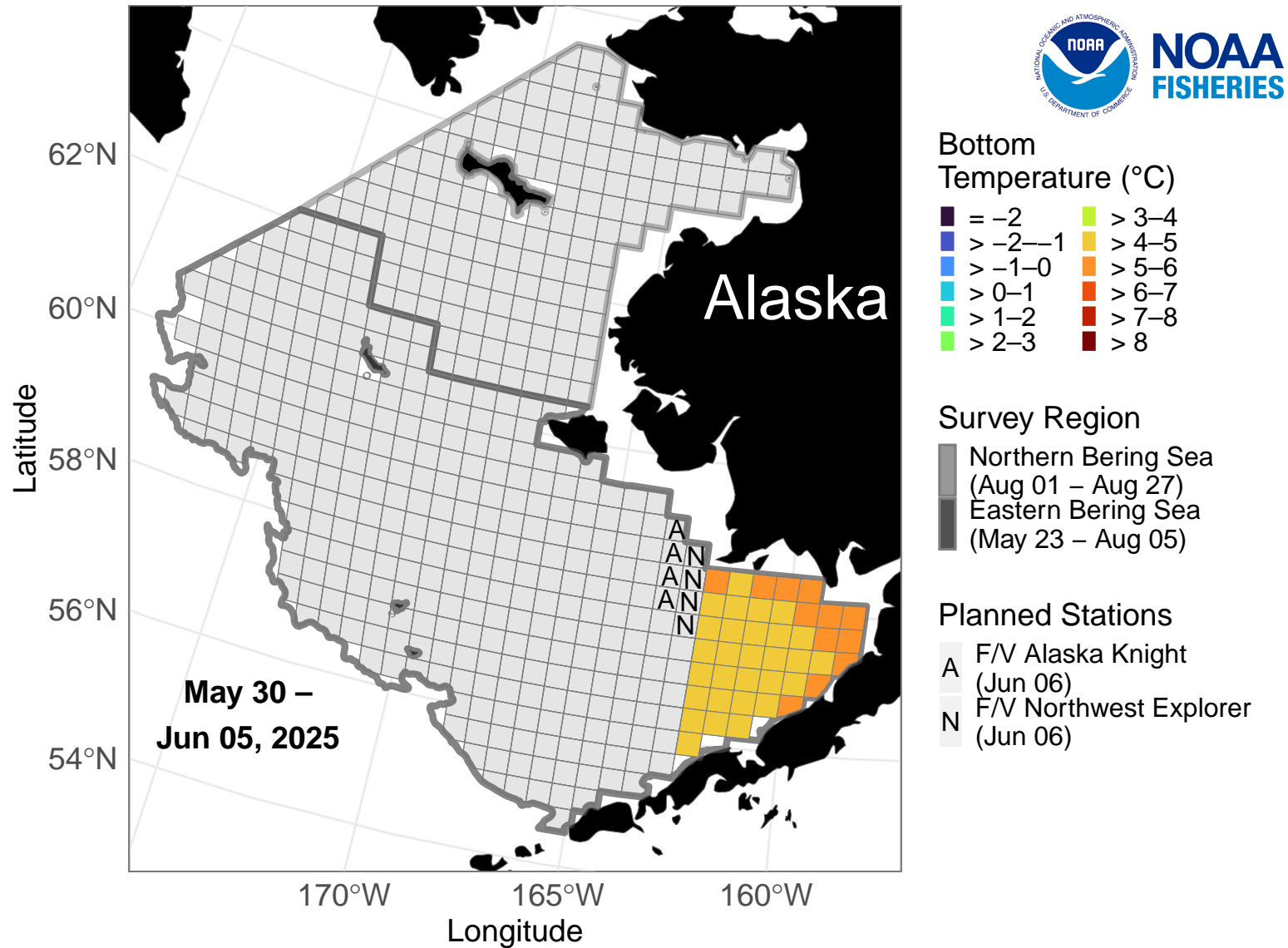
NOAA Fisheries Bering Sea Bottom Trawl Survey



NOAA Fisheries Alaska Fisheries Science Center Groundfish Assessment Program is conducting the eastern Bering Sea and northern Bering Sea bottom trawl surveys. The near real-time ocean bottom temperatures depicted were collected May 31-June 6. On June 6, four stations were surveyed by the F/V *Alaska Knight* and four stations were surveyed by the F/V *Northwest Explorer*. There are 7 stations planned for June 7. Credit: NOAA Fisheries

2025 Bottom Temperature (°C)

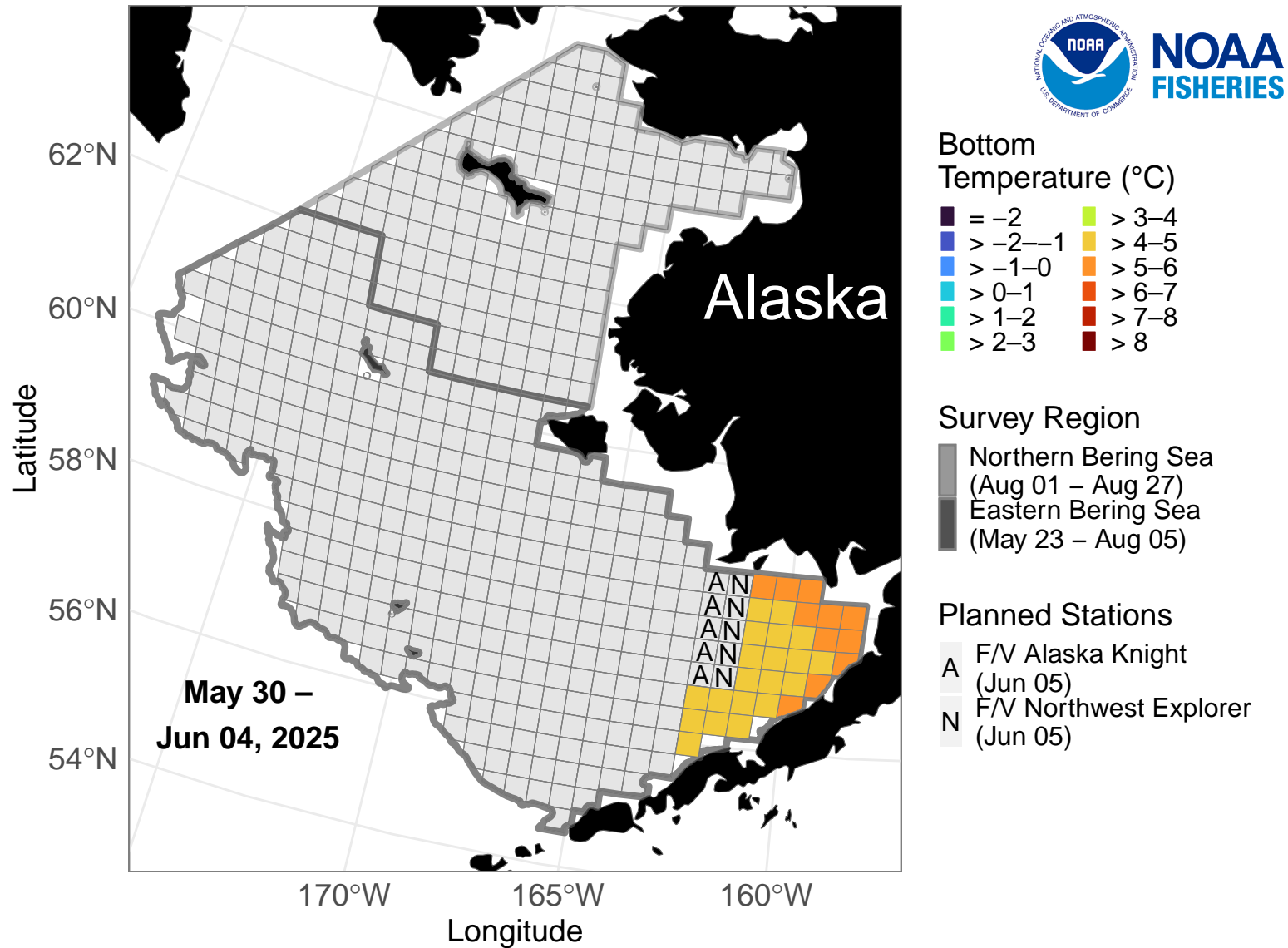
NOAA Fisheries Bering Sea Bottom Trawl Survey



NOAA Fisheries Alaska Fisheries Science Center Groundfish Assessment Program is conducting the eastern Bering Sea and northern Bering Sea bottom trawl surveys. The near real-time ocean bottom temperatures depicted were collected May 31-June 5. On June 5, five stations were surveyed by the F/V *Alaska Knight* and five stations were surveyed by the F/V *Northwest Explorer*. There are 8 stations planned for June 6. Credit: NOAA Fisheries

2025 Bottom Temperature (°C)

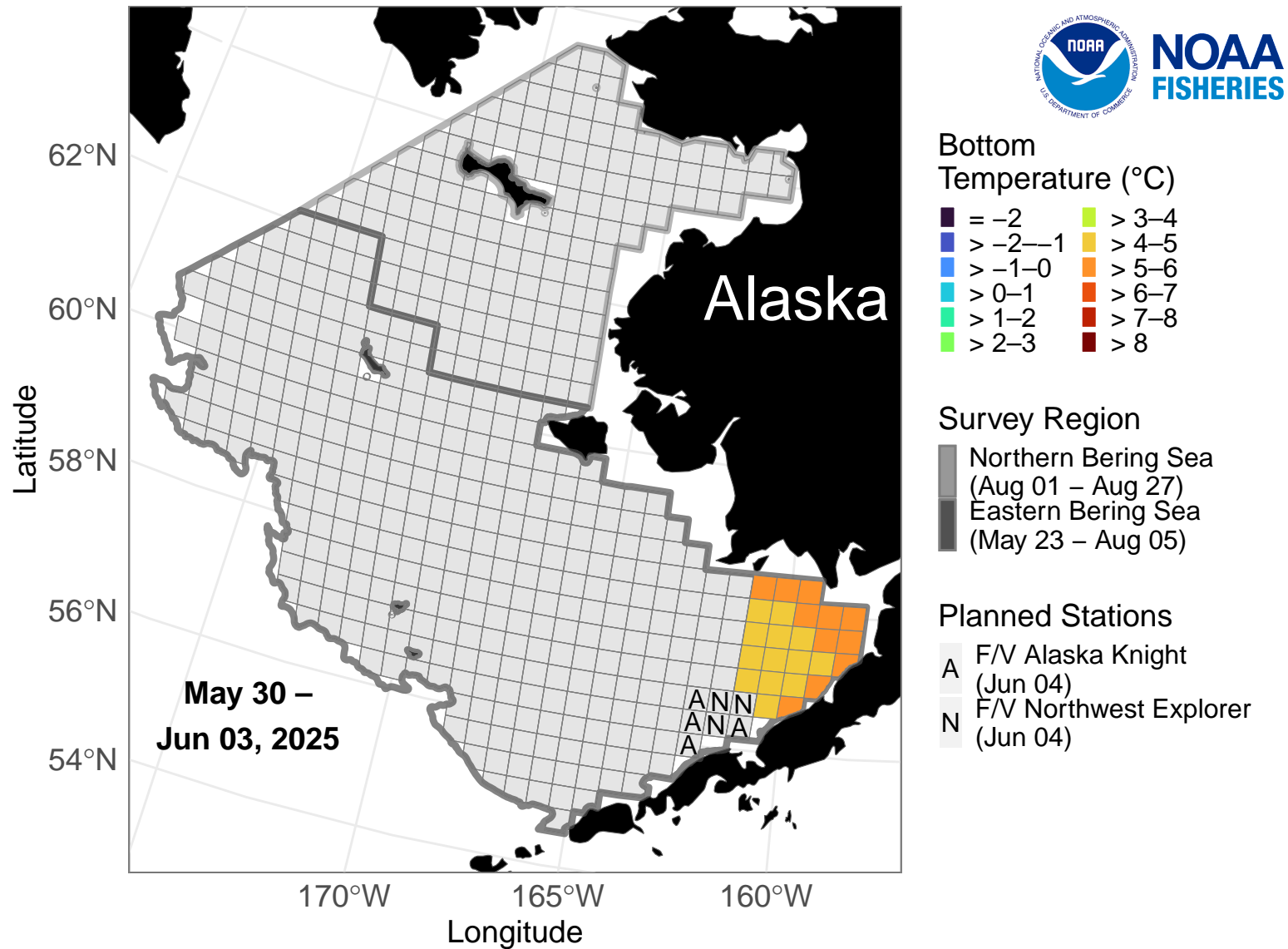
NOAA Fisheries Bering Sea Bottom Trawl Survey



NOAA Fisheries Alaska Fisheries Science Center Groundfish Assessment Program is conducting the eastern Bering Sea and northern Bering Sea bottom trawl surveys. The near real-time ocean bottom temperatures depicted were collected May 31-June 4. On June 4, four stations were surveyed by the F/V *Alaska Knight* and three stations were surveyed by the F/V *Northwest Explorer*. There are 10 stations planned for June 5. Credit: NOAA Fisheries

2025 Bottom Temperature (°C)

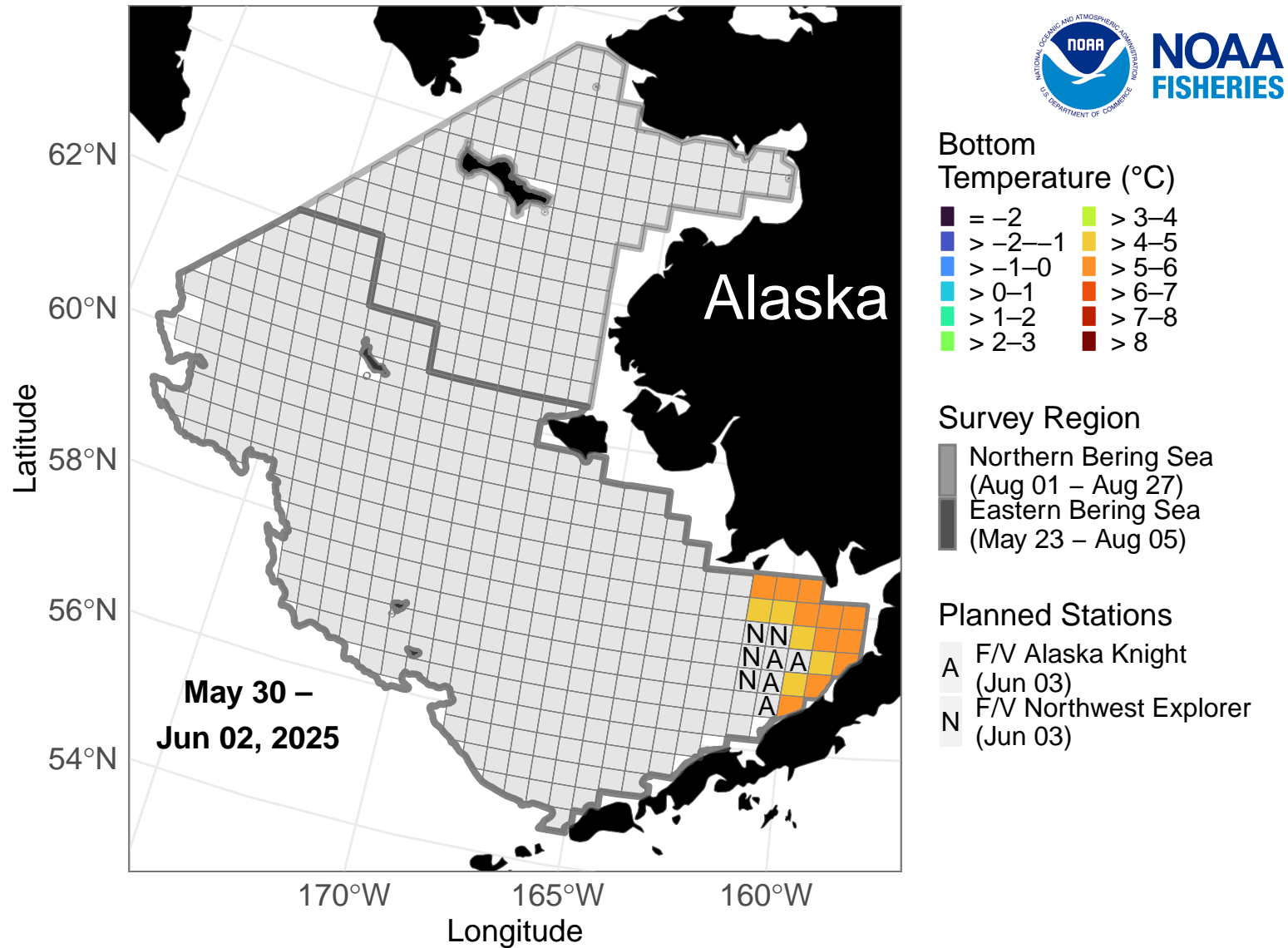
NOAA Fisheries Bering Sea Bottom Trawl Survey



NOAA Fisheries Alaska Fisheries Science Center Groundfish Assessment Program is conducting the eastern Bering Sea and northern Bering Sea bottom trawl surveys. The near real-time ocean bottom temperatures depicted were collected May 31-June 3. On June 3, four stations were surveyed by the F/V *Alaska Knight* and four stations were surveyed by the F/V *Northwest Explorer*. There are 7 stations planned for June 4. Credit: NOAA Fisheries

2025 Bottom Temperature (°C)

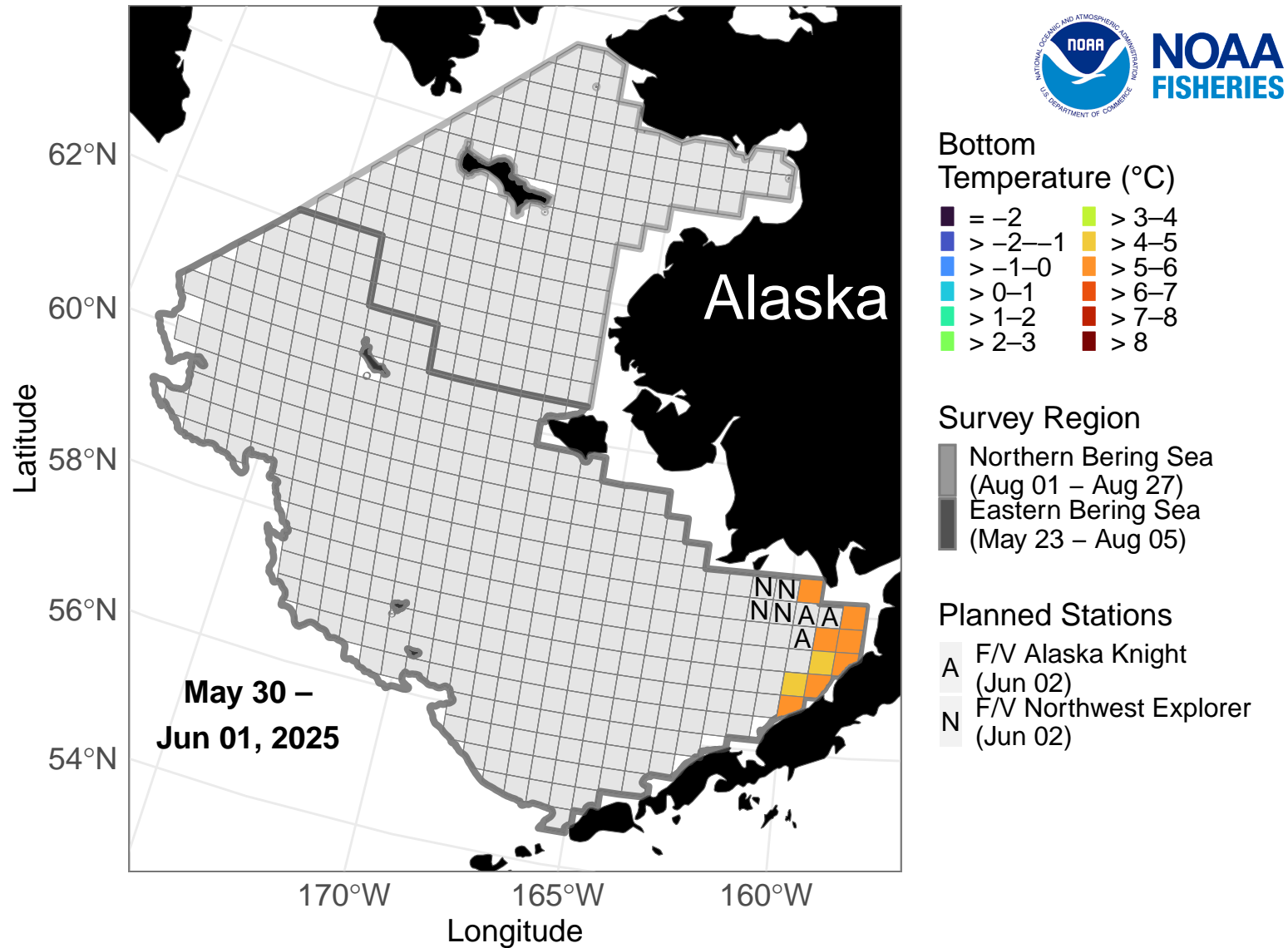
NOAA Fisheries Bering Sea Bottom Trawl Survey



NOAA Fisheries Alaska Fisheries Science Center Groundfish Assessment Program is conducting the eastern Bering Sea and northern Bering Sea bottom trawl surveys. The near real-time ocean bottom temperatures depicted were collected May 31-June 2. On June 2, three stations were surveyed by the F/V *Alaska Knight* and four stations were surveyed by the F/V *Northwest Explorer*. There are 8 stations planned for June 3. Credit: NOAA Fisheries

2025 Bottom Temperature (°C)

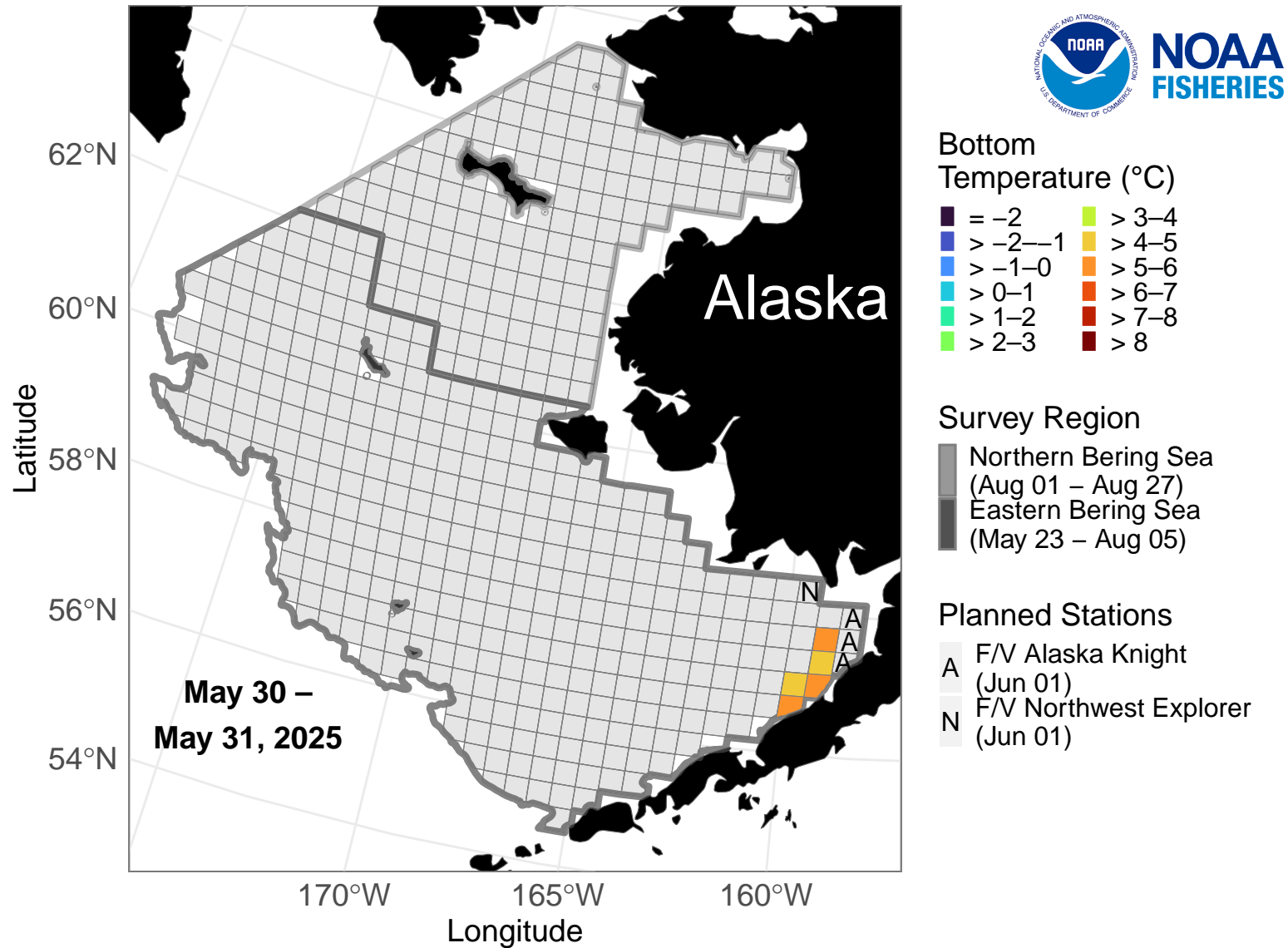
NOAA Fisheries Bering Sea Bottom Trawl Survey



NOAA Fisheries Alaska Fisheries Science Center Groundfish Assessment Program is conducting the eastern Bering Sea and northern Bering Sea bottom trawl surveys. The near real-time ocean bottom temperatures depicted were collected May 31-June 1. On June 1, three stations were surveyed by the F/V *Alaska Knight* and one station was surveyed by the F/V *Northwest Explorer*. There are 7 stations planned for June 2. Credit: NOAA Fisheries

2025 Bottom Temperature (°C)

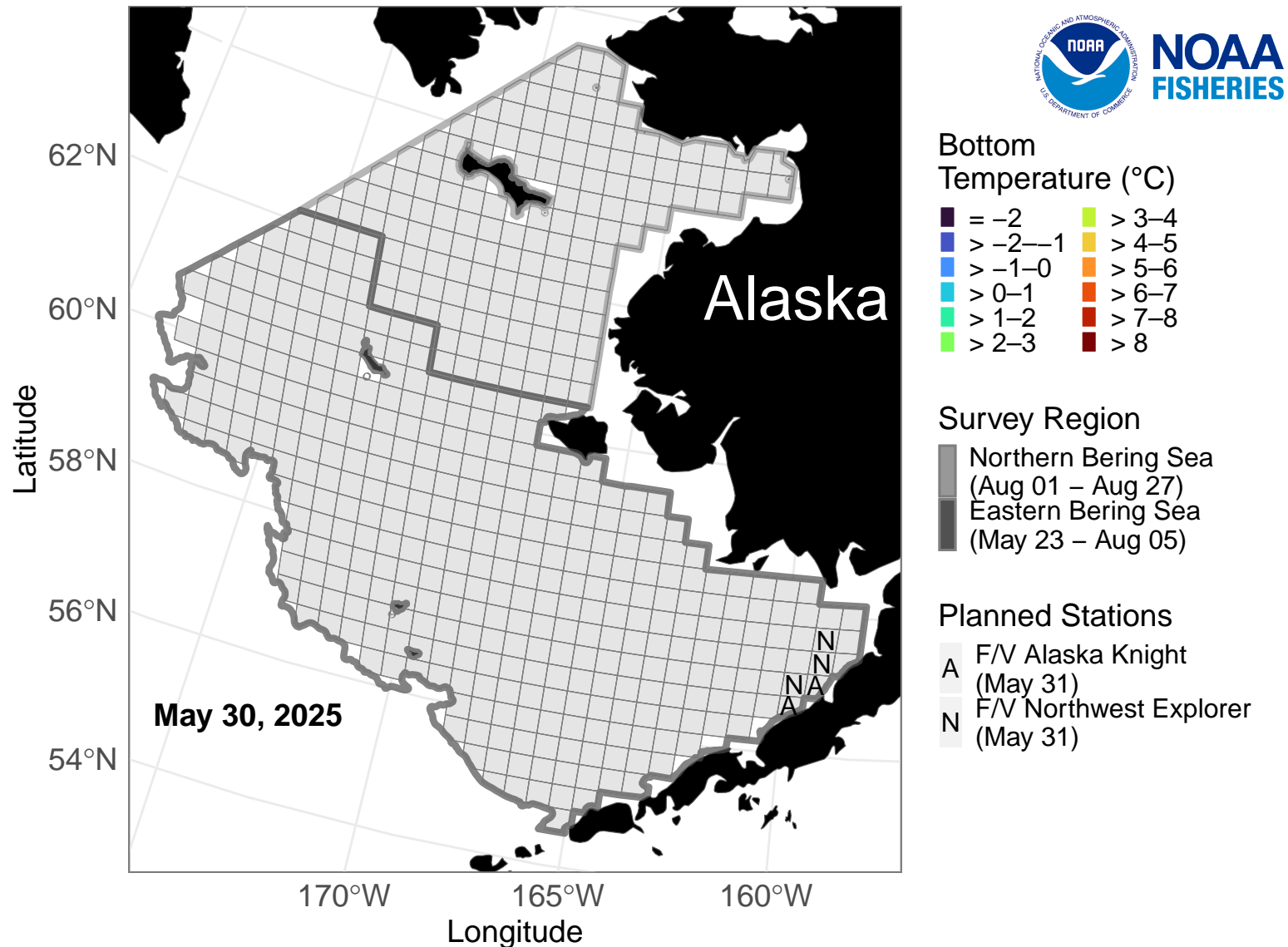
NOAA Fisheries Bering Sea Bottom Trawl Survey



NOAA Fisheries Alaska Fisheries Science Center Groundfish Assessment Program is conducting the eastern Bering Sea and northern Bering Sea bottom trawl surveys. The near real-time ocean bottom temperatures depicted were collected on May 31, 2025. On May 31, two stations were surveyed by the F/V *Alaska Knight* and three stations were surveyed by the F/V *Northwest Explorer*. There are 4 stations planned for June 1. Credit: NOAA Fisheries

2025 Bottom Temperature (°C)

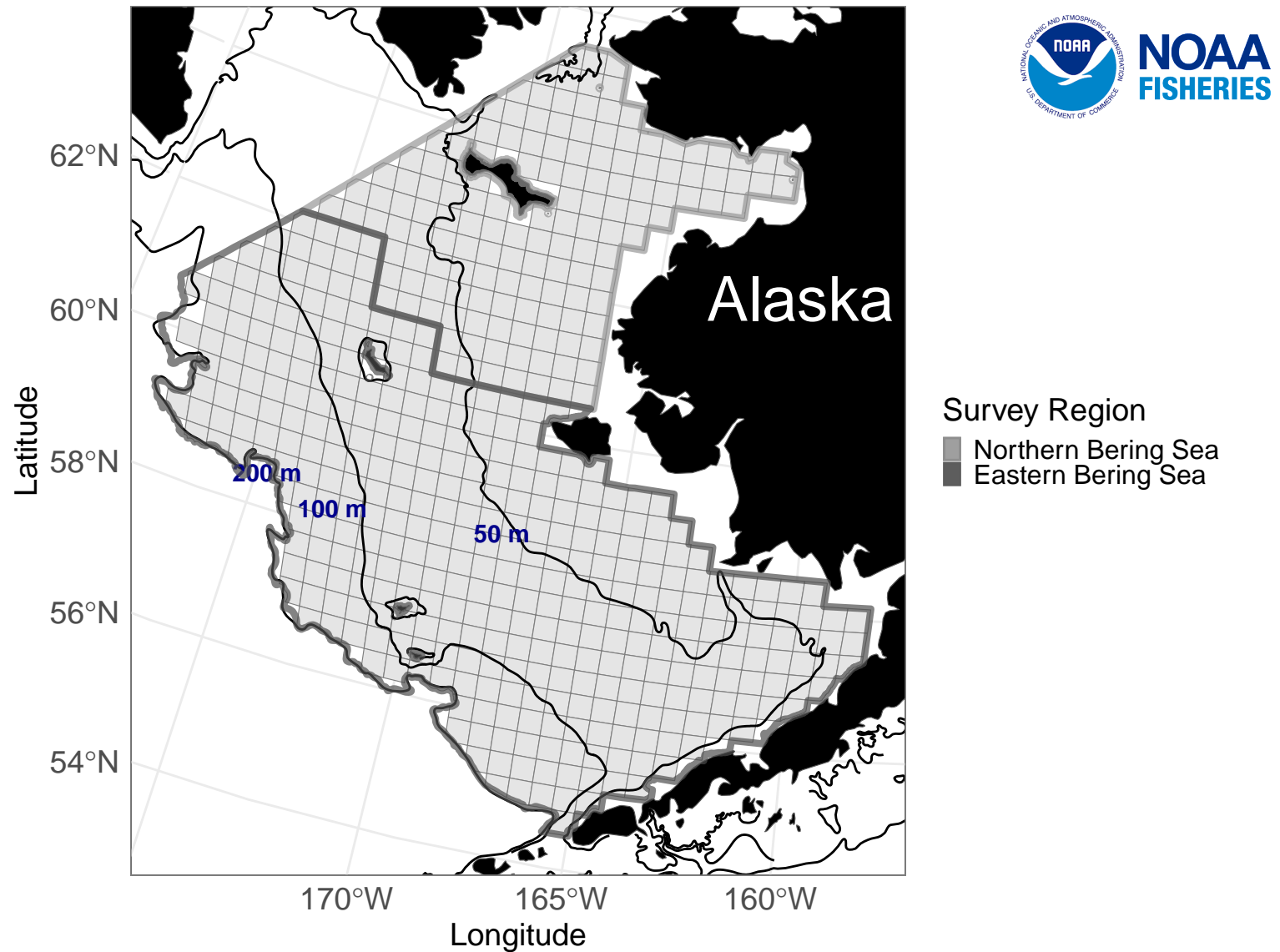
NOAA Fisheries Bering Sea Bottom Trawl Survey



NOAA Fisheries Alaska Fisheries Science Center Groundfish Assessment Program is conducting the eastern Bering Sea and northern Bering Sea bottom trawl surveys. This is the first day of the survey. No stations were surveyed by the F/V Alaska Knight or Northwest Explorer. There are 5 stations planned for May 31. Credit: NOAA Fisheries

Survey Grid

NOAA Fisheries Bering Sea Bottom Trawl Survey



Map of the eastern Bering Sea and northern Bering Sea 2025 survey station grid and the 50 m, 100 m, and 200 m bathymetry lines. Credit: NOAA Fisheries