

BEARDED SEAL (*Erignathus barbatus*): Alaska Stock

STOCK DEFINITION AND GEOGRAPHIC RANGE

Bearded seals are circumpolar in their distribution, extending from the Arctic Ocean (85°E) south to Hokkaido (45°E) in the western Pacific. They generally inhabit areas of shallow water (less than 200 m) that are at least seasonally ice covered. During winter they are most common in broken pack ice (Burns 1967) and in some areas also inhabit shorefast ice (Smith and Hammill 1981). In Alaska waters, bearded seals are distributed over the continental shelf of the Bering, Chukchi, and Beaufort Seas (Ognev 1935, Johnson et al. 1966, Burns 1981, Fig. 12). Bearded seals are evidently most concentrated from January to April over the northern part of the Bering Sea shelf (Burns 1981, Braham et al. 1984). Recent spring surveys along the Alaskan coast indicate that bearded seals tend to prefer areas of between 70% and 90% sea ice coverage, and are typically more abundant 20-100 nmi from shore than within 20 nmi of shore, with the exception of high

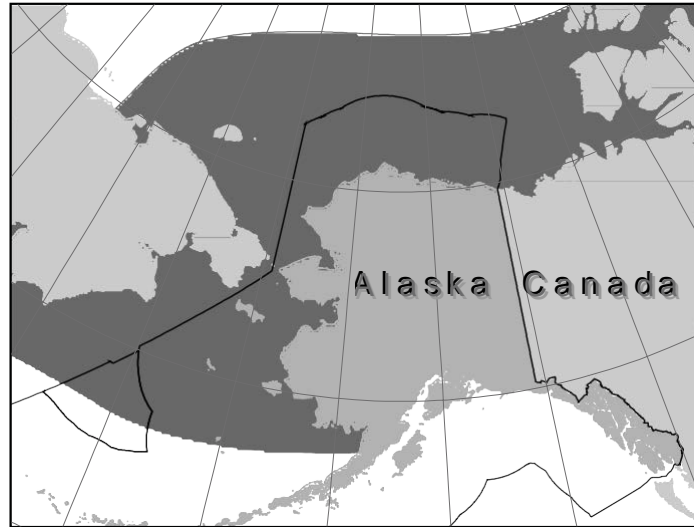


Figure 12. Approximate distribution of bearded seals (shaded area). The combined summer and winter distribution are depicted.

concentrations nearshore to the south of Kivalina (Bengtson et al. 2000; Bengtson et al. 2005; Simpkins et al. 2003). Many of the seals that winter in the Bering Sea migrate north through the Bering Strait from late April through June, and spend the summer along the ice edge in the Chukchi Sea (Burns 1967, Burns 1981). The overall summer distribution is quite broad, with seals rarely hauled out on land, and some seals do not migrate but remain in open-water areas of the Bering and Chukchi Seas (Burns 1981, Nelson 1981, Smith and Hammill 1981). An unknown proportion of the population migrates southward from the Chukchi Sea in late fall and winter, and Burns (1967) noted a movement of bearded seals away from shore during that season as well.

The following information was considered in classifying stock structure based on the Dizon et al. (1992) phylogeographic approach: 1) Distributional data: geographic distribution continuous, 2) Population response data: unknown; 3) Phenotypic data: unknown; 4) Genotypic data: unknown. Based on this limited information, and the absence of any significant fishery interactions, there is currently no strong evidence to suggest splitting bearded seals into more than one stock. Bearded seals range throughout the Arctic into Russian and Canadian waters, however, only the Alaska stock is recognized in U.S. waters.

POPULATION SIZE

Early estimates of the Bering-Chukchi Sea population range from 250,000 to 300,000 (Popov 1976, Burns 1981). Surveys flown from Shishmaref to Barrow during May-June 1999 and 2000 resulted in an average density of 0.07 seals/km² and 0.14 seals/km², respectively, with consistently high densities along the coast to the south of Kivalina (Bengtson et al. 2005). These densities cannot be used to develop an abundance estimate because no correction factor is available. There is no reliable population abundance estimate for the Alaska stock of bearded seals.

Minimum Population Estimate

A reliable minimum population estimate (N_{MIN}) for this stock can not presently be determined because current reliable estimates of abundance are not available.

Current Population Trend

At present, reliable data on trends in population abundance for the Alaska stock of bearded seals are unavailable.

CURRENT AND MAXIMUM NET PRODUCTIVITY RATES

A reliable estimate of the maximum net productivity rate is currently unavailable for the Alaska stock of bearded seals. Hence, until additional data become available, it is recommended that the pinniped maximum theoretical net productivity rate (R_{MAX}) of 12% be employed for this stock (Wade and Angliss 1997).

POTENTIAL BIOLOGICAL REMOVAL

Under the 1994 reauthorized Marine Mammal Protection Act (MMPA), the potential biological removal (PBR) is defined as the product of the minimum population estimate, one-half the maximum theoretical net productivity rate, and a recovery factor: $PBR = N_{MIN} \times 0.5R_{MAX} \times F_R$. The recovery factor (F_R) for this stock is 0.5, the value for pinniped stocks with unknown population status (Wade and Angliss 1997). However, because a reliable estimate of minimum abundance N_{MIN} is currently not available, the PBR for this stock is unknown.

ANNUAL HUMAN-CAUSED MORTALITY AND SERIOUS INJURY

Fisheries Information

Until 2003, there were three different federally-regulated commercial fisheries in Alaska that could have interacted with bearded seals and were monitored for incidental mortality by fishery observers. As of 2003, changes in fishery definitions in the List of Fisheries have resulted in separating these 3 fisheries into 12 fisheries (69 FR 70094, 2 December 2004). This change does not represent a change in fishing effort, but provides managers with better information on the component of each fishery that is responsible for the incidental serious injury or mortality of marine mammal stocks in Alaska. Between 2000 and 2004, there were incidental serious injuries and mortalities of bearded seals in the following fisheries: Bering Sea/Aleutian Islands flatfish trawl and Bering Sea/Aleutian Islands pollock trawl (Table 16). Estimates of marine mammal serious injury/mortality in each of these observed fisheries are provided in Perez (2006). The estimated minimum mortality rate incidental to commercial fisheries is 0.68 bearded seals per year, based exclusively on observer data.

Table 16. Summary of incidental mortality of bearded seals (Alaska stock) due to commercial fisheries from 2000 to 2004 and calculation of the mean annual mortality rate. Details of how percent observer coverage is measured is included in Appendix 6.

| Fishery name | Years | Data type | Observer coverage | Observed mortality (in given yrs.) | Estimated mortality (in given yrs.) | Mean annual mortality |
|--|-------|-----------|-------------------|------------------------------------|-------------------------------------|-----------------------|
| Bering Sea/Aleutian Is. flatfish trawl | 2000 | obs data | 64.5 | 1 | 1.6 | 0.68 (CV = 0.46) |
| | 2001 | | 57.6 | 1 | 1.8 | |
| | 2002 | | 58.4 | 0 | 0 | |
| | 2003 | | 64.1 | 0 | 0 | |
| | 2004 | | 64.3 | 0 | 0 | |
| Total estimated annual mortality | | | | | | 0.68 (CV = 0.46) |

Subsistence/Native Harvest Information

Bearded seals are an important species for Alaska subsistence hunters, with estimated annual harvests of 1,784 (SD = 941) from 1966 to 1977 (Burns 1981). Between August 1985 and June 1986, 791 bearded seals were harvested in five villages in the Bering Strait region based on reports from the Alaska Eskimo Walrus Commission (Kelly 1988).

The Division of Subsistence, Alaska Department of Fish and Game maintains a database that provides additional information on the subsistence harvest of ice seals in different regions of Alaska (ADFG 2000a, b). Information on subsistence harvest of bearded seals has been compiled for 129 villages from reports from the Division of Subsistence (Coffing et al. 1998, Georgette et al. 1998, Wolfe and Hutchinson-Scarborough 1999) and a report from the Eskimo Walrus Commission (Sherrod 1982). Data were lacking for 22 villages; their harvests were estimated using the annual per capita rates of subsistence harvest from a nearby village. Harvest levels were estimated from data gathered in the 1980s for 16 villages; otherwise, data gathered from 1990 to 1998 were used. As of August 2000; the subsistence harvest database indicated that the estimated number of bearded seals harvested for subsistence use per year is 6,788.

At this time, there are no efforts to quantify the current level of harvest of bearded seals by all Alaska communities. However, the U.S. Fish and Wildlife Service collects information on the level of bearded seal harvest in five villages during their Walrus Harvest Monitoring Program. Results from this program indicated that an average of 273 bearded seals were harvested annually in Little Diomed, Gambell, Savoonga, Shishmaref, and Wales from 1998 to 2003 (U.S. Fish and Wildlife Service, Marine Mammals Management, Walrus Harvest Monitoring Project). Because this represents only 5 of the over 100 villages that may harvest bearded seals, this level of harvest is known to underestimate the actual harvest level for these years.

A report on ice seal subsistence harvest in three Alaskan communities indicated that the number and species of ice seals harvested in a particular village may vary considerably between years (Coffing et al. 1999). These interannual differences are likely due to differences in ice and wind conditions that change the hunters' access to different ice habitats frequented by different types of seals. Regardless of the extent to which the harvest may vary interannually, it is clear that the harvest level of 6,788 bearded seals estimated by the ADFG Division of Subsistence is considerably higher than the previous minimum estimate of 791 per year from five villages in the Bering Strait. Although some of the more recent entries in the ADFG database have associated measures of uncertainty (Coffing et al. 1999, Georgette et al. 1998), the overall total does not. The estimate of 6,788 bearded seals is the best estimate of harvest level currently available.

STATUS OF STOCK

Bearded seals are not listed as "depleted" under the MMPA or listed as "threatened" or "endangered" under the Endangered Species Act. Reliable estimates of the minimum population, PBR, and human-caused mortality and serious injury are currently not available. Because the PBR for bearded seals is unknown, the level of annual U.S. commercial fishery-related mortality that can be considered insignificant and approaching zero mortality and serious injury rate is unknown. No information is available on the status of bearded seals. Due to a very low level of interactions between U.S. commercial fisheries and bearded seals, the Alaska stock of bearded seals is not considered a strategic stock.

Habitat Concerns

Evidence indicates that the Arctic climate is changing significantly and that one result of the change is a reduction in the extent of sea ice in at least some regions of the Arctic (ACIA 2004, Johannessen et al. 2004). Bearded seals, along with other seals that are dependent on sea ice for at least part of their life history, will be vulnerable to reductions in sea ice. There are insufficient data to make reliable predictions of the effects of Arctic climate change on the Alaska bearded seal stock.

CITATIONS

- ACIA. 2004. Impacts of a warming Arctic: Arctic Climate Impact Assessment. Cambridge University Press, Cambridge, U.K.
- Alaska Department of Fish and Game. 2000a. Community Profile Database 3.04 for Access 97. Division of Subsistence, Anchorage.
- Alaska Department of Fish and Game. 2000b. Seals+ Database for Access 97. Division of Subsistence, Anchorage. Bengtson, J. L., P. L. Boveng, L. M. Hiruki-Raring, K. L. Laidre, C. Pungowiyi, and M. A. Simpkins. 2000. Abundance and distribution of ringed seals (*Phoca hispida*) in the coastal Chukchi Sea. Pp. 149-160 *In* A. L. Lopez and D. P. DeMaster. Marine Mammal Protection Act and Endangered Species Act Implementation Program 1999. AFSC Processed Rep. 2000-11, Alaska Fish. Sci. Cent., 7600 Sand Point Way NE, Seattle, WA 98115.
- Bengtson, J. L., P. L. Boveng, L. M. Hiruki-Raring, K. L. Laidre, C. Pungowiyi, and M. A. Simpkins. 2000. Abundance and distribution of ringed seals (*Phoca hispida*) in the coastal Chukchi Sea. Pp. 149-160 *In* A. L. Lopez and D. P. DeMaster. Marine Mammal Protection Act and Endangered Species Act Implementation Program 1999. AFSC Processed Rep. 2000-11, Alaska Fish. Sci. Cent., 7600 Sand Point Way NE, Seattle, WA 98115.
- Bengtson, J. L., L. M. Hiruki-Raring, M. A. Simpkins, and P. L. Boveng. 2005. Ringed and bearded seal densities in the eastern Chukchi Sea, 1999-2000. *Polar Biol.* 28: 833-845.
- Braham, H. W., J. J. Burns, G. A. Fedoseev, and B. D. Krogman. 1984. Habitat partitioning by ice-associated pinnipeds: distribution and density of seals and walrus in the Bering Sea, April 1976. Pp. 25-47 *In* F. H. Fay and G. A. Fedoseev (eds.), Soviet-American cooperative research on marine mammals. vol. 1. Pinnipeds. U.S. Dep. Commer., NOAA Tech. Rep. NMFS 12.

- Burns, J. J. 1967. The Pacific bearded seal. Alaska Dep. Fish and Game, Pittman-Robertson Proj. Rep. W-6-R and W-14-R. 66 pp.
- Burns, J. J. 1981. Bearded seal-*Erignathus barbatus* Erxleben, 1777. Pp. 145-170 In S. H. Ridgway and R. J. Harrison (eds.), Handbook of Marine Mammals. vol. 2. Seals. Academic Press, New York.
- Coffing, M., C. Scott, and C.J. Utermohle. 1998. The subsistence harvest of seals and sea lions by Alaska Natives in three communities of the Yukon-Kuskokwim Delta, Alaska, 1997-1998. Technical Paper No. 255, Alaska Dep. Fish and Game, Division of Subsistence, Juneau.
- Coffing, M., C. Scott, and C.J. Utermohle. 1999. The subsistence harvest of seals and sea lions by Alaska Natives in three communities of the Yukon-Kuskokwim Delta, Alaska, 1998-1999. Technical Paper No. 257, Alaska Dep. Fish and Game, Division of Subsistence, Juneau.
- Dizon, A. E., C. Lockyer, W. F. Perrin, D. P. DeMaster, and J. Sisson. 1992. Rethinking the stock concept: a phylogeographic approach. *Conserv. Biol.* 6:24-36.
- Georgette, S., M. Coffing, C. Scott, and C. Utermohle. 1998. The subsistence harvest of seals and sea lions by Alaska Natives in the Norton Sound-Bering Strait Region, Alaska, 1996-97. Technical Paper No. 242, Alaska Dep. Fish and Game, Division of Subsistence, Juneau.
- Johannessen, O. M., L. Bengtsson, M. W. Miles, S. I. Kuzmina, V. A. Semenov, G. V. Alexseev, A. P. Nagurnyi, V. F. Zakharov, L. P. Bobylev, L. H. Pettersson, K. Hasselmann, and H. P. Cattle. 2004. Arctic climate change: observed and modeled temperature and sea-ice variability. *Tellus.* 56A:328-341.
- Johnson, M. L., C. H. Fiscus, B. T. Stenson, and M. L. Barbour. 1966. Marine mammals. Pp. 877-924 In N. J. Wilimovsky and J. N. Wolfe (eds.), Environment of the Cape Thompson region, Alaska. U.S. Atomic Energy Comm., Oak Ridge, TN.
- Kelly, B. P. 1988. Bearded seal, *Erignathus barbatus*. Pp. 77-94 In J. W. Lentfer (ed.), Selected marine mammals of Alaska. Species accounts with research and management recommendations. Marine Mammal Commission, Washington, D.C.
- Nelson, R. K. 1981. Harvest of the sea: coastal subsistence in modern Wainwright. North Slope Borough, Barrow, Alaska. 125 pp.
- Ognev, S. I. 1935. Mammals of the U.S.S.R. and adjacent countries. vol. 3. Carnivora (Fissipedia and Pinnipedia). Gosudarst. Izdat. Biol. Med. Lit., Moscow. (Transl. from Russian by Israel Prog. Sci. Transl., 1962, 741 pp.).
- Perez, M. A. 2006. Analysis of marine mammal bycatch data from the trawl, longline, and pot groundfish fisheries of Alaska, 1998-2004, defined by geographic area, gear type, and target groundfish catch species. U.S. Dep. Commer., NOAA Tech. Memo. NMFS-AFSC-167.
- Popov, L. A. 1976. Status of main ice forms of seals inhabiting waters of the U.S.S.R. and adjacent to the country marine areas. FAO ACMRR/MM/SC/51. 17 pp.
- Sherrod, G.K. 1982. Eskimo Walrus Commission's 1981 Research Report: The Harvest and Use of Marine Mammals in Fifteen Eskimo Communities. Kawerak, Inc., Nome.
- Simpkins, M. A., L. M. Hiruki-Raring, G. Sheffield, J. M. Grebmeier, and J. L. Bengtson. 2003. Habitat selection by ice-associated pinnipeds near St. Lawrence Island, Alaska in March 2001. *Polar Biol.* 26:577-586.
- Smith, T. G., and M. O. Hammill. 1981. Ecology of the ringed seal, *Phoca hispida*, in its fast-ice breeding habitat. *Can. J. Zool.* 59:966-981.
- Wade, P. R., and R. Angliss. 1997. Guidelines for assessing marine mammal stocks: report of the GAMMS workshop April 3-5, 1996, Seattle, Washington. U.S. Dep. Commer., NOAA Tech. Memo. NMFS-OPR-12, 93 pp.
- Wolfe, R., and L.B. Hutchinson-Scarborough. 1999. The subsistence harvest of harbor seal and sea lion by Alaska Natives in 1998. Technical Paper No. 250, Alaska Dep. Fish and Game, Division of Subsistence, Juneau.