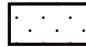

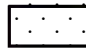





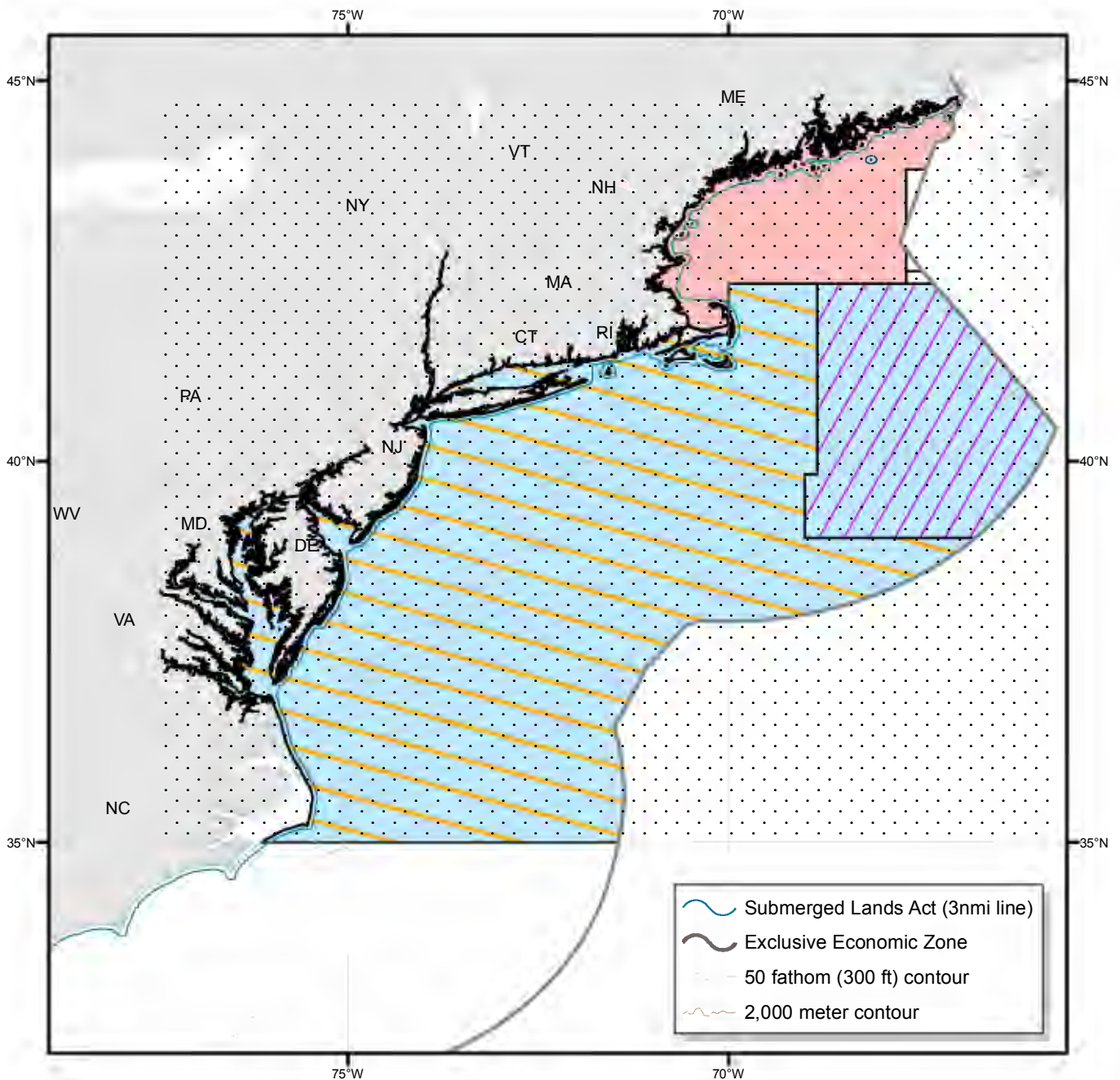
Shapefile: Stock_Areas.shp (Part 1)

Posted to Website: 3/15/2015

This shapefile includes the NMFS Regulated Areas in Northeast and Mid-Atlantic Waters depicted below. The dataset can be downloaded from the GARFO GIS website at <http://www.greateratlantic.fisheries.noaa.gov/gis>.

- | | |
|---|---|
|  American Plaice Stock Area* |  SNE/MA Winter Flounder Stock Area |
|  Pollock Stock Area* |  GB Cod Stock Area |
|  GB Winter Flounder Stock Area |  GOM Cod Stock Area |

**These regulated areas have identical boundaries*



Shapefile: Stock_Areas.shp (Part 2)

Posted to Website: 3/15/2015

This shapefile includes the NMFS Regulated Areas in Northeast and Mid-Atlantic Waters depicted below. The dataset can be downloaded from the GARFO GIS website at <http://www.greateratlantic.fisheries.noaa.gov/gis>.

- | | | | |
|---|--|--|----------------------------|
|  | SNE/MA Yellowtail Flounder Stock Area (BDAS) |  | White Hake Stock Area* |
|  | CC/GOM Yellowtail Flounder Stock Area (BDAS) |  | Witch Flounder Stock Area* |
|  | GB Yellowtail Flounder Stock Area | <i>*These regulated areas have identical boundaries</i> | |

